

SIGLEC7 RABBIT PAB

Cat.#: S220908

Product Name: Anti-SIGLEC7 Rabbit Polyclonal Antibody

Synonyms: p75; QA79; AIRM1; CD328; CDw328; D-siglec; SIGLEC-7; SIGLECP2; SIGLEC19P; p75/AIRM1

UNIPROT ID: Q9Y286 (Gene Accession - NP_055200)

Background: Siglec-7, which is highly expressed in monocytes and resident blood cells but not in parenchymatous cells, mediates inhibition of natural killer cell cytotoxicity. Due to alternative splicing events, two isoforms exist for Siglec-12, namely SLG-L (the long isoform) and SLG-S (the shorter isoform). These isoforms are differentially expressed with the longer isoform predominantly found in small intestine, spleen and bone marrow, and the shorter isoform predominantly found in small intestine, spleen and adrenal gland.

Immunogen: Synthetic peptide of human SIGLEC7

Applications: ELISA, IHC

Recommended Dilutions: IHC: 25-100; ELISA: 1000-2000

Host Species: Rabbit

Clonality: Rabbit Polyclonal

Isotype: Immunogen-specific rabbit IgG

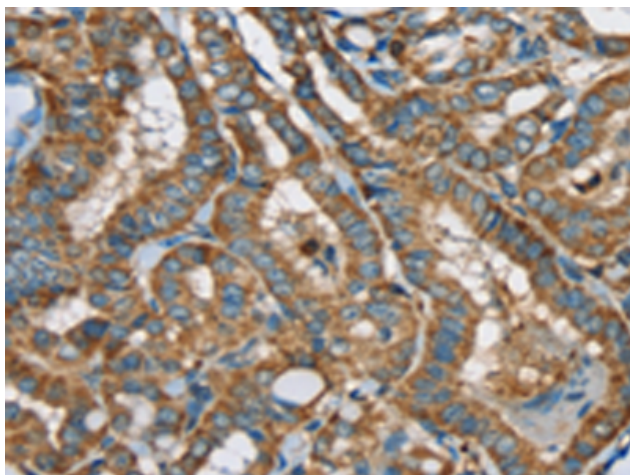
Purification: Antigen affinity purification

Species Reactivity: Human

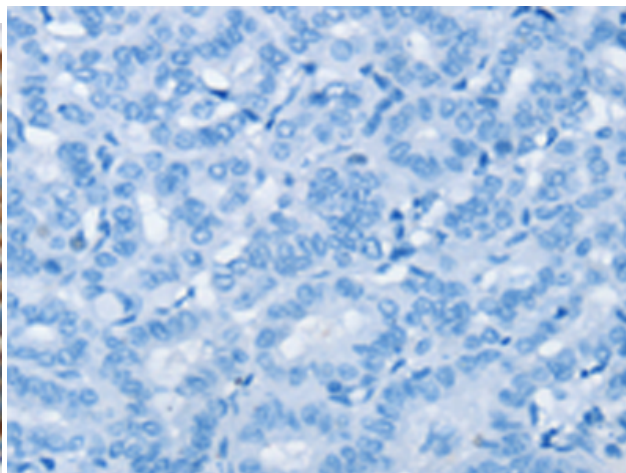
Constituents: PBS (without Mg²⁺ and Ca²⁺), pH 7.4, 150 mM NaCl, 0.05% Sodium Azide and 40% glycerol

Research Areas: Neuroscience, Cardiovascular, Immunology, Stem Cells

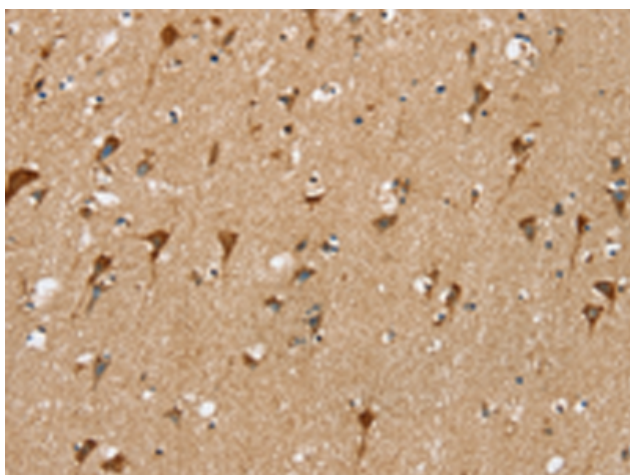
Storage & Shipping: Store at -20°C. Avoid repeated freezing and thawing



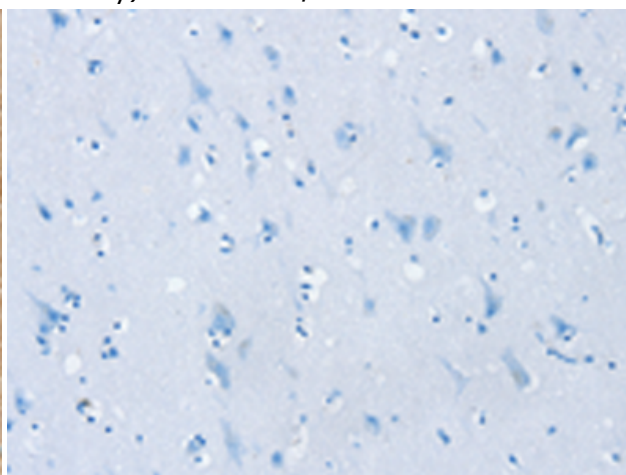
Immunohistochemistry analysis of paraffin embedded Human thyroid cancer tissue using 220908 (SIGLEC7 Antibody) at a dilution of 1/35 (Cytoplasm or Cell membrane).



In comparison with the IHC on the left, the same paraffin-embedded Human thyroid cancer tissue is first treated with the synthetic peptide and then with 220908 (Anti-SIGLEC7 Antibody) at dilution 1/35.



The image on the left is immunohistochemistry of paraffin-embedded Human brain tissue using 220908 (Anti-SIGLEC7 Antibody) at a dilution of 1/35.



In comparison with the IHC on the left, the same paraffin-embedded Human brain tissue is first treated with synthetic peptide and then with D262201 (Anti-SIGLEC7 Antibody) at dilution 1/35.