

SIGLECL1 RABBIT PAB

Cat.#: S221648

Product Name: Anti-SIGLECL1 Rabbit Polyclonal Antibody

Synonyms: C19orf75; SIGLECP7; SIGLEC23P

UNIPROT ID: Q8N7X8 (Gene Accession - NP_775906)

Background: Putative adhesion molecule that mediates sialic-acid dependent binding to cells. The sialic acid recognition site may be masked by cis interactions with sialic acids on the same cell surface.

Immunogen: Synthetic peptide of human SIGLECL1

Applications: ELISA, IHC

Recommended Dilutions: IHC: 25-100; ELISA: 5000-10000

Host Species: Rabbit

Clonality: Rabbit Polyclonal

Isotype: Immunogen-specific rabbit IgG

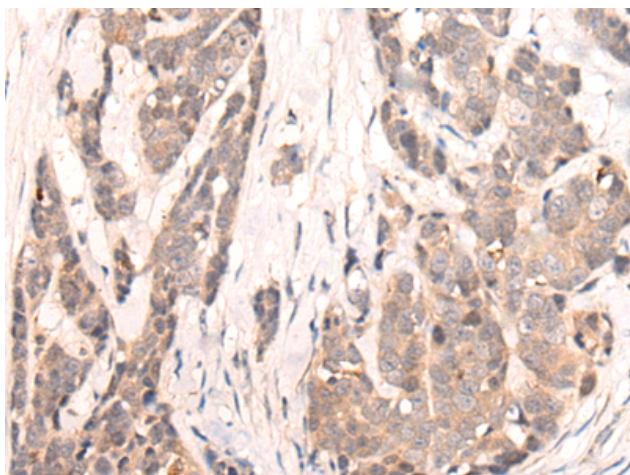
Purification: Antigen affinity purification

Species Reactivity: Human

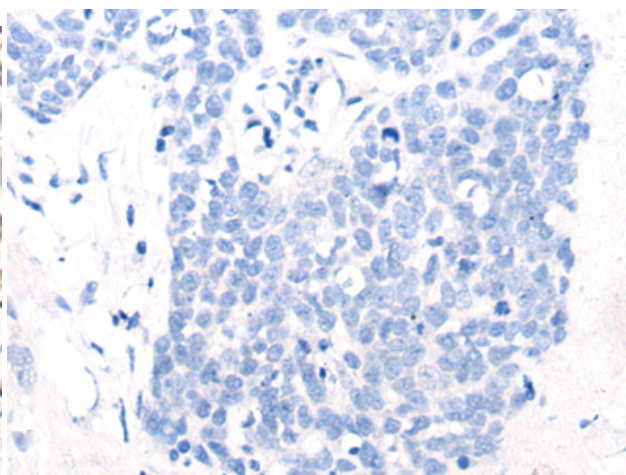
Constituents: PBS (without Mg²⁺ and Ca²⁺), pH 7.4, 150 mM NaCl, 0.05% Sodium Azide and 40% glycerol

Research Areas: Immunology

Storage & Shipping: Store at -20°C. Avoid repeated freezing and thawing



Immunohistochemistry analysis of paraffin embedded Human thyroid cancer tissue using 221648(SIGLECL1 Antibody) at a dilution of 1/25(Cytoplasm and Cell membrane).



In comparison with the IHC on the left, the same paraffin-embedded Human thyroid cancer tissue is first treated with the synthetic peptide and then with 221648(Anti-SIGLECL1 Antibody) at dilution 1/25.