

## SIGMAR1 RABBIT PAB

**Cat.#:** S217093

**Product Name:** Anti-SIGMAR1 Rabbit Polyclonal Antibody

**Synonyms:** SRBP; ALS16; OPR1; SR-BP; SIG-1R; SR-BP1; sigma1R

**UNIPROT ID:** Q99720 (Gene Accession - BC004899 )

**Background:** This gene encodes a receptor protein that interacts with a variety of psychotomimetic drugs, including cocaine and amphetamines. The receptor is believed to play an important role in the cellular functions of various tissues associated with the endocrine, immune, and nervous systems. As indicated by its previous name, opioid receptor sigma 1 (OPR1), the product of this gene was erroneously thought to function as an opioid receptor; it is now thought to be a non-opioid receptor. Mutations in this gene has been associated with juvenile amyotrophic lateral sclerosis 16. Alternative splicing of this gene results in transcript variants encoding distinct isoforms.

**Immunogen:** Fusion protein of human SIGMAR1

**Applications:** ELISA, WB, IHC

**Recommended Dilutions:** IHC: 100-300;WB: 500-2000;ELISA: 2000-5000

**Host Species:** Rabbit

**Clonality:** Rabbit Polyclonal

**Isotype:** Immunogen-specific rabbit IgG

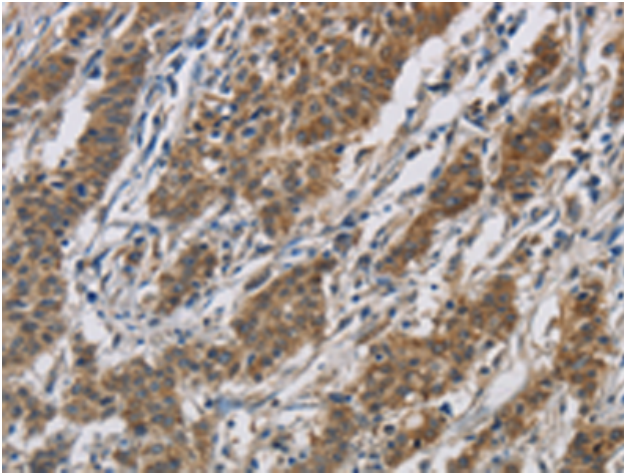
**Purification:** Antigen affinity purification

**Species Reactivity:** Human, Mouse, Rat

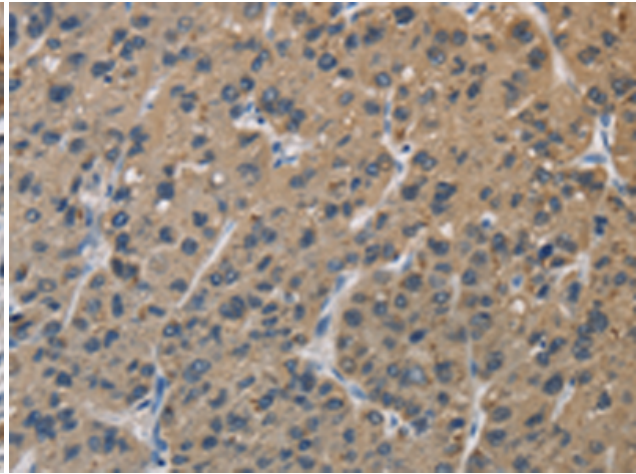
**Constituents:** PBS (without Mg<sup>2+</sup> and Ca<sup>2+</sup>), pH 7.4, 150 mM NaCl, 0.05% Sodium Azide and 40% glycerol

**Research Areas:** Signal Transduction, Cancer, Neuroscience, Cardiovascular

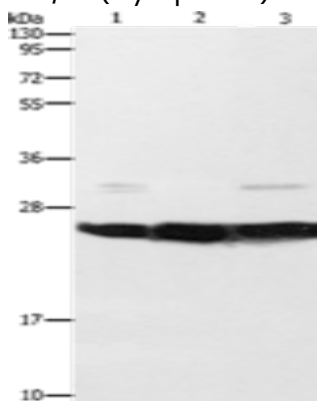
**Storage & Shipping:** Store at -20°C. Avoid repeated freezing and thawing



Immunohistochemistry analysis of paraffin-embedded Human gastric cancer tissue using 217093(SIGMAR1 Antibody) at a dilution of 1/50(Cytoplasm).



Immunohistochemistry analysis of paraffin-embedded Human liver cancer tissue using 217093(Anti-SIGMAR1 Antibody) at a dilution of 1/50.



Gel: 10%SDS-PAGE, Lysate: 40 µg;  
Lane 1-3: Mouse liver tissue, Mouse brain tissue, A549 cells;  
Primary antibody: 217093(SIGMAR1 Antibody) at dilution 1/310;  
Secondary antibody: Goat anti rabbit IgG at 1/8000 dilution;  
Exposure time: 1 second