

## SIK1 RABBIT PAB

**Cat.#:** S214727

**Product Name:** Anti-SIK1 Rabbit Polyclonal Antibody

**Synonyms:** MSK; SIK; SNFILK

**UNIPROT ID:** P57059 (Gene Accession - NP\_775490 )

**Background:** SIK1 (salt-inducible kinase 1), also known as SNFILK or MSK, is a 783 amino acid protein that contains one UBA domain and one protein kinase domain and belongs to the Ser/Thr protein kinase family. Localized to both the nucleus and the cytoplasm, SIK1 uses magnesium as a cofactor to catalyze the ATP-dependent phosphorylation of target proteins and is thought to be important for the early stages of skeletal muscle growth and myocardial cell differentiation. Additionally, SIK1 has a potential role in regulation of the G2/M cell cycle transition, as well as in inhibitory control of CREB protein function.

**Immunogen:** Synthetic peptide of human SIK1

**Applications:** ELISA, IHC

**Recommended Dilutions:** IHC: 25-100; ELISA: 1000-2000

**Host Species:** Rabbit

**Clonality:** Rabbit Polyclonal

**Isotype:** Immunogen-specific rabbit IgG

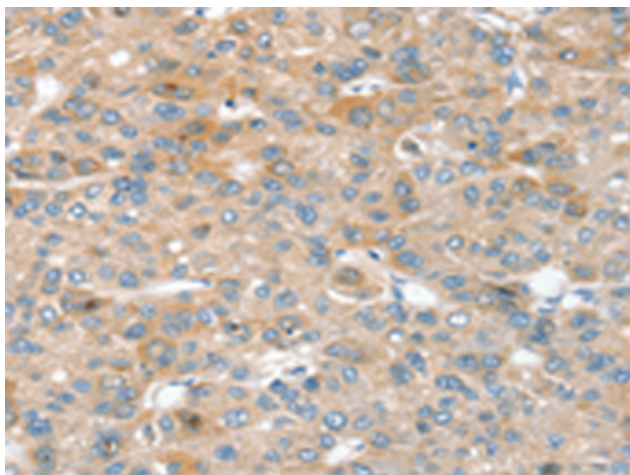
**Purification:** Antigen affinity purification

**Species Reactivity:** Human, Mouse, Rat

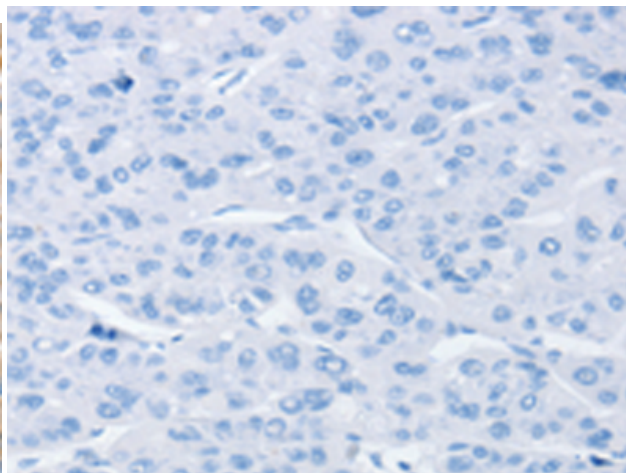
**Constituents:** PBS (without Mg<sup>2+</sup> and Ca<sup>2+</sup>), pH 7.4, 150 mM NaCl, 0.05% Sodium Azide and 40% glycerol

**Research Areas:** Signal Transduction, Epigenetics and Nuclear Signaling, Cancer, Cardiovascular

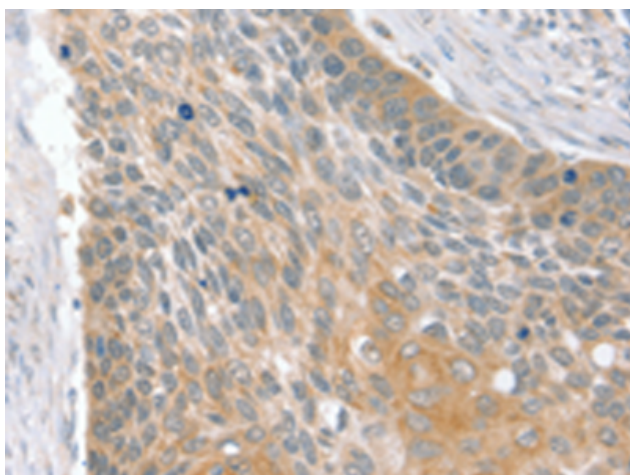
**Storage & Shipping:** Store at -20°C. Avoid repeated freezing and thawing



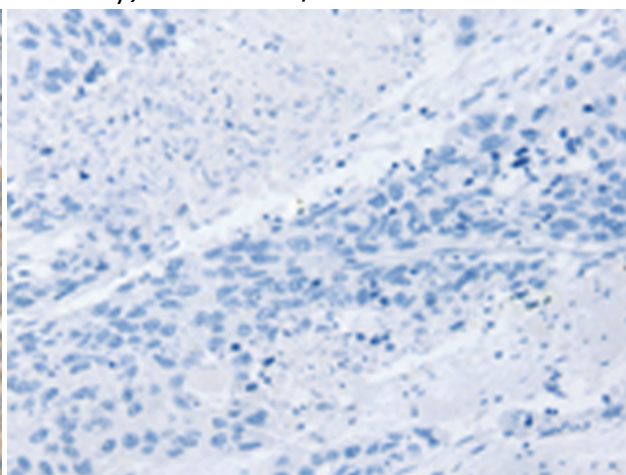
Immunohistochemistry analysis of paraffin-embedded Human liver cancer tissue using 214727(SIK1 Antibody) at a dilution of 1/30(Cytoplasm or Nucleus).



In comparison with the IHC on the left, the same paraffin-embedded Human liver cancer tissue is first treated with the synthetic peptide and then with 214727(Anti-SIK1 Antibody) at dilution 1/30.



The image on the left is immunohistochemistry of paraffin-embedded Human esophagus cancer tissue using 214727(Anti-SIK1 Antibody) at a dilution of 1/30.



In comparison with the IHC on the left, the same paraffin-embedded Human esophagus cancer tissue is first treated with synthetic peptide and then with D162280(Anti-SIK1 Antibody) at dilution 1/30.