

SIMC1 RABBIT PAB

Cat.#: S219557

Product Name: Anti-SIMC1 Rabbit Polyclonal Antibody

Synonyms: OOMA1; PLEIAD; C5orf25

UNIPROT ID: Q8NDZ2 (Gene Accession - BC032390)

Background: SIMC1 (SUMO Interacting Motifs Containing 1) is a Protein Coding gene. Gene Ontology (GO) annotations related to this gene include SUMO polymer binding. An important paralog of this gene is SKIDA1.

Immunogen: Fusion protein of human SIMC1

Applications: ELISA, IHC

Recommended Dilutions: IHC: 50-100; ELISA: 5000-10000

Host Species: Rabbit

Clonality: Rabbit Polyclonal

Isotype: Immunogen-specific rabbit IgG

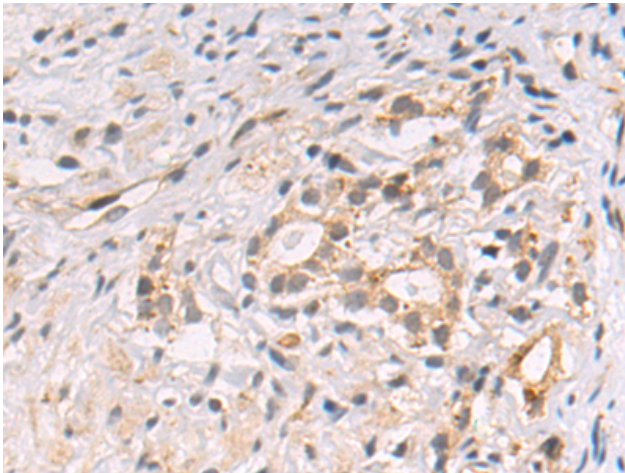
Purification: Antigen affinity purification

Species Reactivity: Human

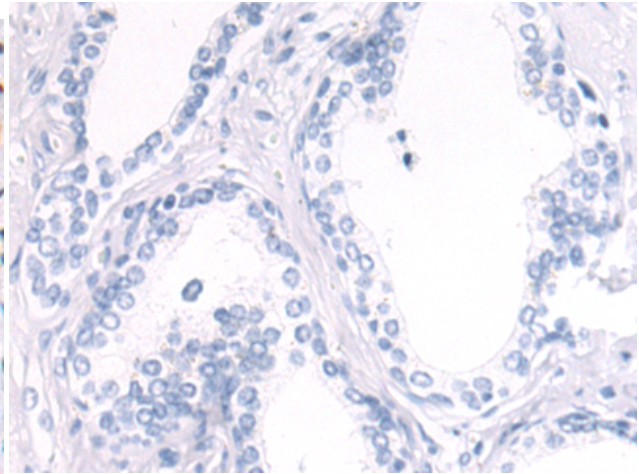
Constituents: PBS (without Mg²⁺ and Ca²⁺), pH 7.4, 150 mM NaCl, 0.05% Sodium Azide and 40% glycerol

Research Areas: Cell Biology, Signal Transduction

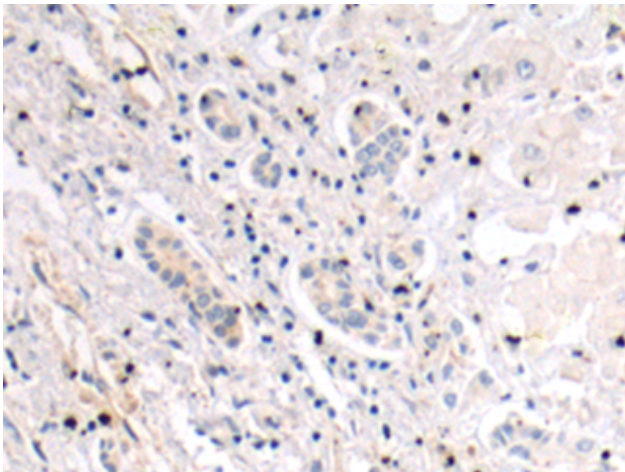
Storage & Shipping: Store at -20°C. Avoid repeated freezing and thawing



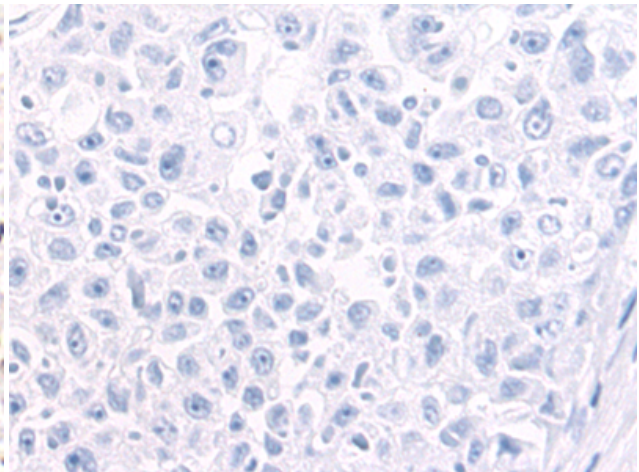
Immunohistochemistry analysis of paraffin embedded Human prostate cancer tissue using 219557(SIMC1 Antibody) at a dilution of 1/50(Cytoplasm).



In comparison with the IHC on the left, the same paraffin-embedded Human prostate cancer tissue is first treated with the fusion protein and then with 219557(Anti-SIMC1 Antibody) at dilution 1/50.



The image on the left is immunohistochemistry of paraffin-embedded Human liver cancer tissue using 219557(Anti-SIMC1 Antibody) at a dilution of 1/50.



In comparison with the IHC on the left, the same paraffin-embedded Human liver cancer tissue is first treated with fusion protein and then with D227723(Anti-SIMC1 Antibody) at dilution 1/50.