

SKP1 RABBIT MAB

Cat.#: N262903

Product Name: Anti-SKP1 Rabbit Monoclonal Antibody

Synonyms: SKP1; EMC19; OCP2; SKP1A; TCEB1L; S-phase kinase-associated protein 1; Cyclin-A/CDK2-associated protein p19; Organ of Corti protein 2; OCP-2; Organ of Corti protein II; OCP-II; RNA polymerase II elongation factor-like protein; SIII; Transcr

UNIPROT ID: P63208

Background: Essential component of the SCF (SKP1-CUL1-F-box protein) ubiquitin ligase complex, which mediates the ubiquitination of proteins involved in cell cycle progression, signal transduction and transcription.

Immunogen: A synthetic peptide of human Skp1

Applications: WB,ICC/IF

Recommended Dilutions: WB: 1/500-1/1000 IF: 1/50-1/200

Host Species: Rabbit

Clonality: Rabbit Monoclonal

Clone ID: R01-6H2

MW: Calculated MW: 19 kDa; Observed MW: 19 kDa

Isotype: IgG

Purification: Affinity Purified

Species Reactivity: Human,Mouse,Rat

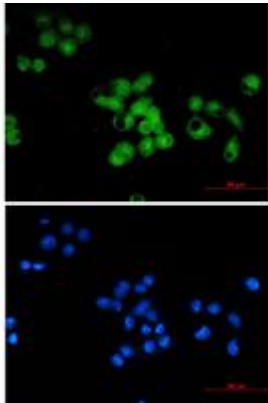
Conjugation: Unconjugated

Modification: Unmodified

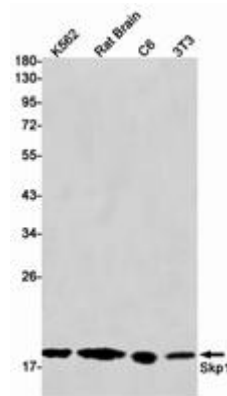
Constituents: PBS (without Mg²⁺ and Ca²⁺), pH 7.3 containing 50% glycerol, 0.5% BSA and 0.02% sodium azide

Research Areas: Cell Biology

Storage & Shipping: Store at -20°C. Avoid repeated freezing and thawing



Immunocytochemistry analysis of Skp1 (green) in MCF-7 using Skp1 antibody, and DAPI (blue)



Western blot analysis of Skp1 in K562, rat Brain, C6, 3T3 lysates using SKP1 antibody.