

## SLAMF8 RABBIT PAB

**Cat.#:** S217211

**Product Name:** Anti-SLAMF8 Rabbit Polyclonal Antibody

**Synonyms:** BLAME; CD353; SBBI42

**UNIPROT ID:** Q9P0V8 (Gene Accession - BC109194 )

**Background:** This gene encodes a member of the CD2 family of cell surface proteins involved in lymphocyte activation. These proteins are characterized by Ig domains. This protein is expressed in lymphoid tissues, and studies of a similar protein in mouse suggest that it may function during B cell lineage commitment. The gene is found in a region of chromosome 1 containing many CD2 genes.

**Immunogen:** Fusion protein of human SLAMF8

**Applications:** ELISA, IHC

**Recommended Dilutions:** IHC: 50-200; ELISA: 1000-5000

**Host Species:** Rabbit

**Clonality:** Rabbit Polyclonal

**Isotype:** Immunogen-specific rabbit IgG

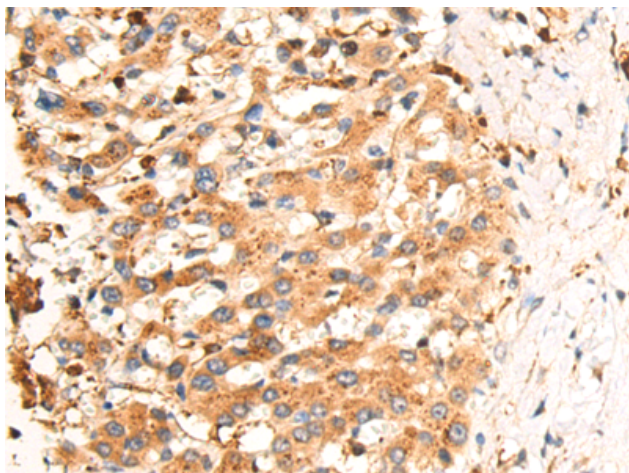
**Purification:** Antigen affinity purification

**Species Reactivity:** Human

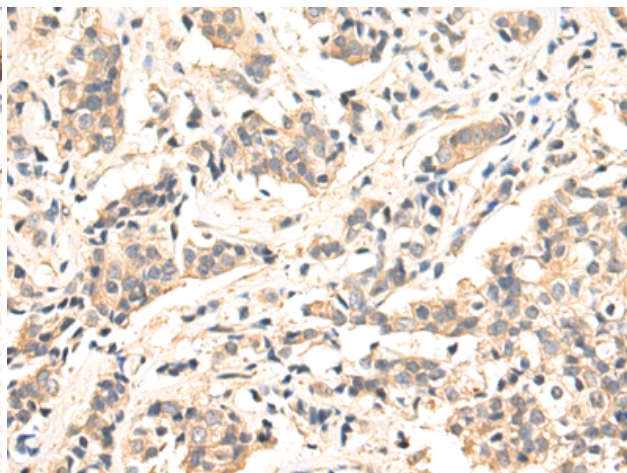
**Constituents:** PBS (without Mg<sup>2+</sup> and Ca<sup>2+</sup>), pH 7.4, 150 mM NaCl, 0.05% Sodium Azide and 40% glycerol

**Research Areas:** Immunology

**Storage & Shipping:** Store at -20°C. Avoid repeated freezing and thawing



Immunohistochemistry analysis of paraffin-embedded Human liver cancer tissue using 217211(SLAMF8 Antibody) at a dilution of 1/50(Cytoplasm).



Immunohistochemistry analysis of paraffin-embedded Human breast cancer tissue using 217211(Anti-SLAMF8 Antibody) at a dilution of 1/50.