

SLC10A1 RABBIT PAB

Cat.#: N225035

Product Name: Anti-SLC10A1 Rabbit pAb

Synonyms: SLC10A1; NTC1; GIG29; Sodium/bile acid cotransporter; Cell growth-inhibiting gene 29 protein; Na(+)/bile acid cotransporter; Na(+)/taurocholate transport protein; Sodium/taurocholate cotransporting polypeptide; Solute carrier family 10 member 1; NTC1

UNIPROT ID: Q14973

Background: As a major transporter of conjugated bile salts from plasma into the hepatocyte, it has a key role in the enterohepatic circulation of bile salts necessary for the solubilization and absorption of dietary fat and fat-soluble vitamins.

Immunogen: The antiserum was produced against synthesized peptide derived from the C-terminal region of human SLC10A1. AA range:281-330

Applications: WB,IHC-P,ELISA

Recommended Dilutions: WB: 1/500-1/1000 IHC: 1/50-1/100 ELISA: 1/10000

Host Species: Rabbit

Clonality: Rabbit Polyclonal

Clone ID: -

MW: Calculated MW: 38 kDa; Observed MW: 38 kDa

Isotype: IgG

Purification: Affinity Purified

Species Reactivity: Human

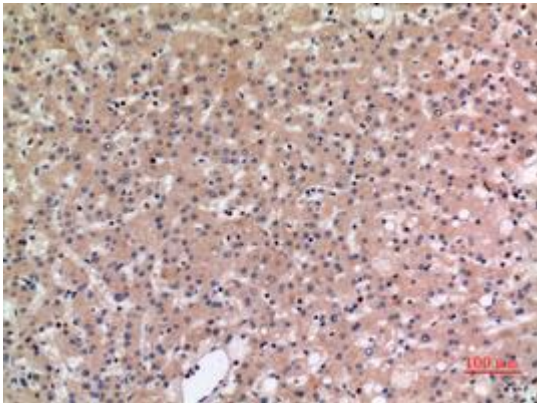
Conjugation: Unconjugated

Modification: Unmodified

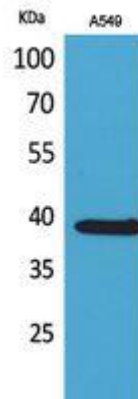
Constituents: PBS (without Mg²⁺ and Ca²⁺), pH 7.3 containing 50% glycerol, 0.5% BSA and 0.02% sodium azide

Research Areas: Signal Transduction

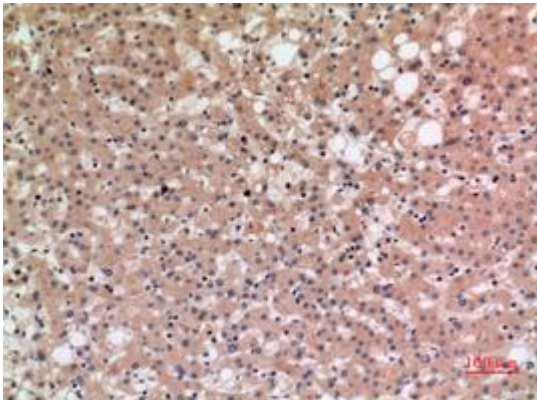
Storage & Shipping: Store at -20°C. Avoid repeated freezing and thawing



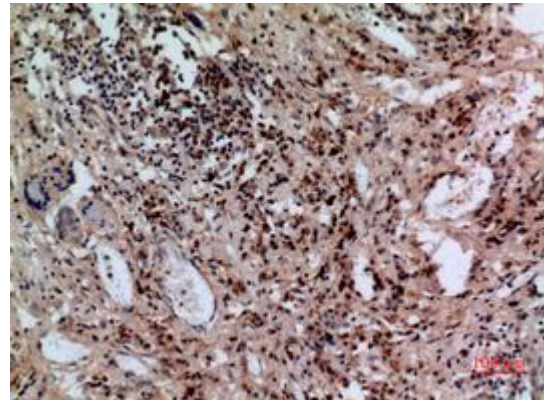
Immunohistochemistry analysis of paraffin-embedded Human liver using SLC10A1 antibody. High-pressure and temperature Sodium Citrate pH 6.0 was used for antigen retrieval.



Western blot analysis of SLC10A1 in A549 lysates using SLC10A1 antibody.



Immunohistochemistry analysis of paraffin-embedded Human liver using SLC10A1 antibody. High-pressure and temperature Sodium Citrate pH 6.0 was used for antigen retrieval.



Immunohistochemistry analysis of paraffin-embedded Human lung using SLC10A1 antibody. High-pressure and temperature Sodium Citrate pH 6.0 was used for antigen retrieval.