

## SLC12A1 RABBIT PAB

**Cat.#:** S216781

**Product Name:** Anti-SLC12A1 Rabbit Polyclonal Antibody

**Synonyms:** BSC1; NKCC2

**UNIPROT ID:** Q13621 (Gene Accession - BC040138 )

**Background:** This gene encodes a kidney-specific sodium-potassium-chloride cotransporter that is expressed on the luminal membrane of renal epithelial cells of the thick ascending limb of Henle's loop and the macula densa. It plays a key role in concentrating urine and accounts for most of the NaCl resorption. It is sensitive to such diuretics as furosemide and bumetanide. Some Bartter-like syndromes result from defects in this gene. Alternative splicing results in multiple transcript variants encoding distinct isoforms. Additional splice variants have been described but their biological validity in humans has not been experimentally proven.

**Immunogen:** Fusion protein of human SLC12A1

**Applications:** ELISA, WB, IHC

**Recommended Dilutions:** IHC: 25-100;WB: 200-1000;ELISA: 1000-2000

**Host Species:** Rabbit

**Clonality:** Rabbit Polyclonal

**Isotype:** Immunogen-specific rabbit IgG

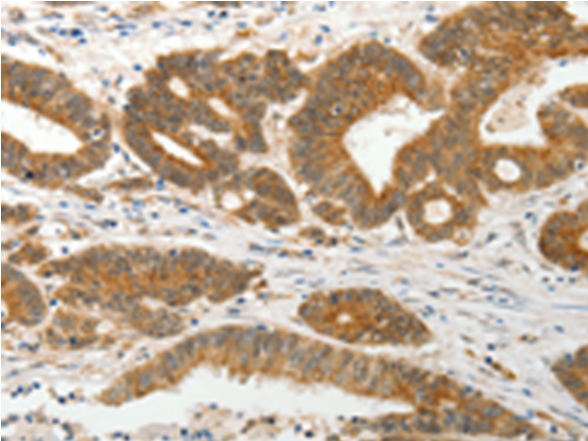
**Purification:** Antigen affinity purification

**Species Reactivity:** Human, Mouse, Rat

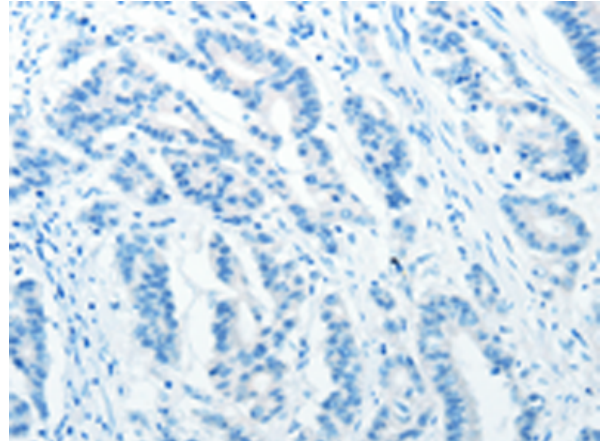
**Constituents:** PBS (without Mg<sup>2+</sup> and Ca<sup>2+</sup>), pH 7.4, 150 mM NaCl, 0.05% Sodium Azide and 40% glycerol

**Research Areas:** Metabolism

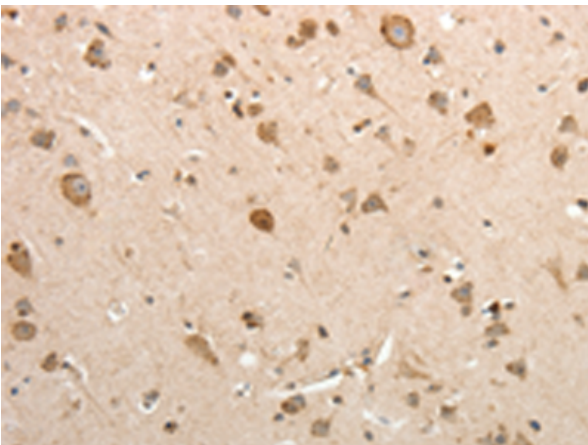
**Storage & Shipping:** Store at -20°C. Avoid repeated freezing and thawing



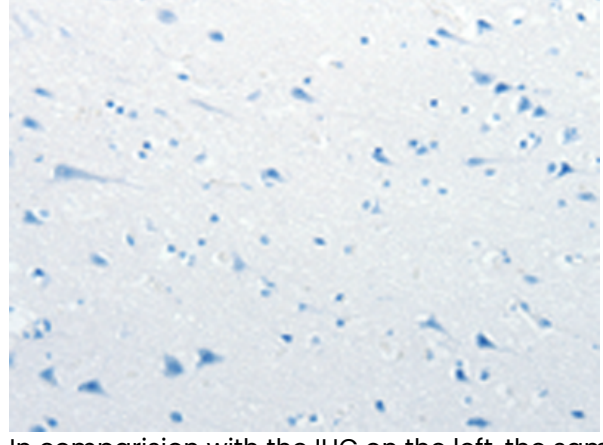
Immunohistochemistry analysis of paraffin embedded Human colon cancer tissue using 216781(SLC12A1 Antibody) at a dilution of 1/15(Cytoplasm ).



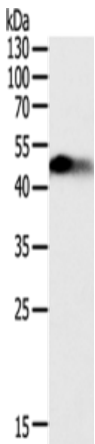
In comparison with the IHC on the left, the same paraffin-embedded Human colon cancer tissue is first treated with the fusion protein and then with 216781(Anti-SLC12A1 Antibody) at dilution 1/15.



The image on the left is immunohistochemistry of paraffin-embedded Human brain tissue using 216781(Anti-SLC12A1 Antibody) at a dilution of 1/15.



In comparison with the IHC on the left, the same paraffin-embedded Human brain tissue is first treated with fusion protein and then with D221227(Anti-SLC12A1 Antibody) at dilution 1/15.



Gel: 12%SDS-PAGE, Lysate: 40 µg;  
Lane: Human fetal kidney tissue;  
Primary antibody: 216781(SLC12A1 Antibody) at dilution 1/200;  
Secondary antibody: Goat anti rabbit IgG at 1/8000 dilution;  
Exposure time: 1 minute



# Product Description

Pioneering GTPase and Oncogene Product Development since 2010

---