

SLC15A1 RABBIT PAB

Cat.#: S215550

Product Name: Anti-SLC15A1 Rabbit Polyclonal Antibody

Synonyms: PEPT1; HPECT1; HPEPT1

UNIPROT ID: P46059 (Gene Accession - NP_005064)

Background: This gene encodes an intestinal hydrogen peptide cotransporter that is a member of the solute carrier family 15. The encoded protein is localized to the brush border membrane of the intestinal epithelium and mediates the uptake of di- and tripeptides from the lumen into the enterocytes. This protein plays an important role in the uptake and digestion of dietary proteins. This protein also facilitates the absorption of numerous peptidomimetic drugs.

Immunogen: Synthetic peptide of human SLC15A1

Applications: ELISA, IHC

Recommended Dilutions: IHC: 25-100; ELISA: 5000-10000

Host Species: Rabbit

Clonality: Rabbit Polyclonal

Isotype: Immunogen-specific rabbit IgG

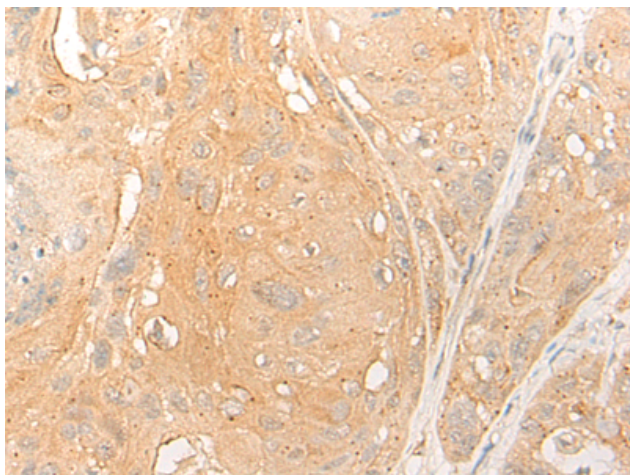
Purification: Antigen affinity purification

Species Reactivity: Human, Mouse, Rat

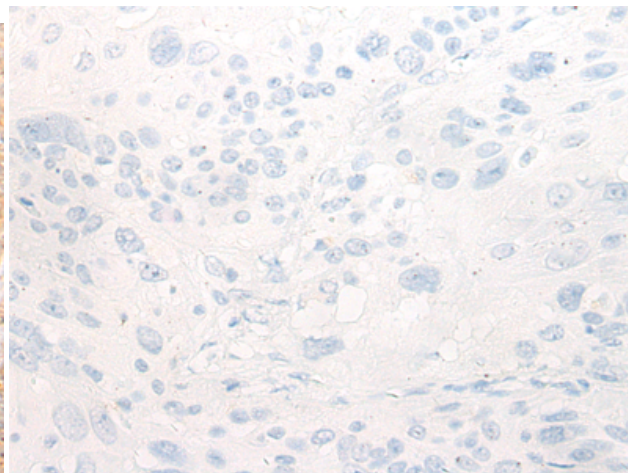
Constituents: PBS (without Mg²⁺ and Ca²⁺), pH 7.4, 150 mM NaCl, 0.05% Sodium Azide and 40% glycerol

Research Areas: Metabolism

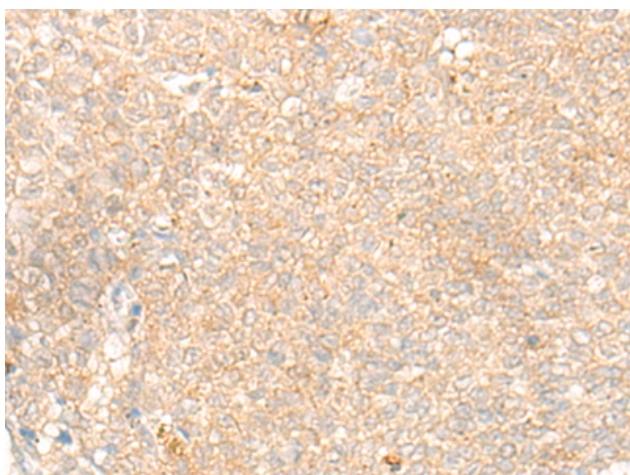
Storage & Shipping: Store at -20°C. Avoid repeated freezing and thawing



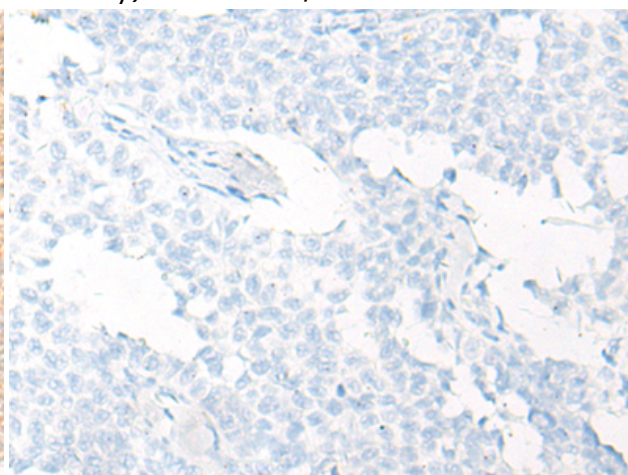
Immunohistochemistry analysis of paraffin embedded Human esophagus cancer tissue using 215550 (SLC15A1 Antibody) at a dilution of 1/25 (Cytoplasm).



In comparison with the IHC on the left, the same paraffin-embedded Human esophagus cancer tissue is first treated with the synthetic peptide and then with 215550 (Anti-SLC15A1 Antibody) at dilution 1/25.



The image on the left is immunohistochemistry of paraffin-embedded Human ovarian cancer tissue using 215550 (Anti-SLC15A1 Antibody) at a dilution of 1/25.



In comparison with the IHC on the left, the same paraffin-embedded Human ovarian cancer tissue is first treated with synthetic peptide and then with D163539 (Anti-SLC15A1 Antibody) at dilution 1/25.