

## SLC16A11 RABBIT PAB

**Cat.#:** S220918

**Product Name:** Anti-SLC16A11 Rabbit Polyclonal Antibody

**Synonyms:** MCT11; MCT 11

**UNIPROT ID:** Q8NCK7 (Gene Accession - NP\_699188 )

**Background:** Enables pyruvate transmembrane transporter activity. Involved in lipid metabolic process. Located in endoplasmic reticulum membrane and plasma membrane.

**Immunogen:** Synthetic peptide of human SLC16A11

**Applications:** ELISA, WB, IHC

**Recommended Dilutions:** IHC: 50-200;WB: 1000-5000;ELISA: 5000-10000

**Host Species:** Rabbit

**Clonality:** Rabbit Polyclonal

**Isotype:** Immunogen-specific rabbit IgG

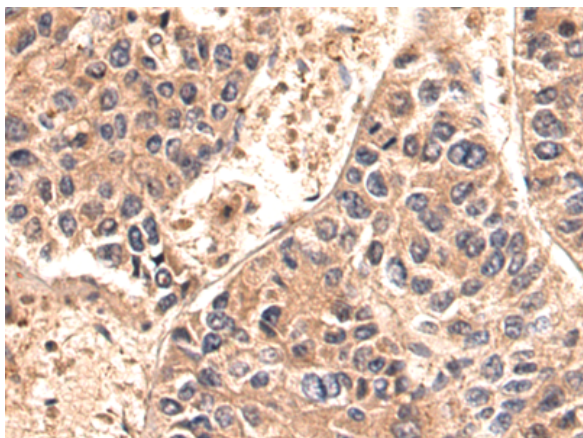
**Purification:** Antigen affinity purification

**Species Reactivity:** Human, Mouse

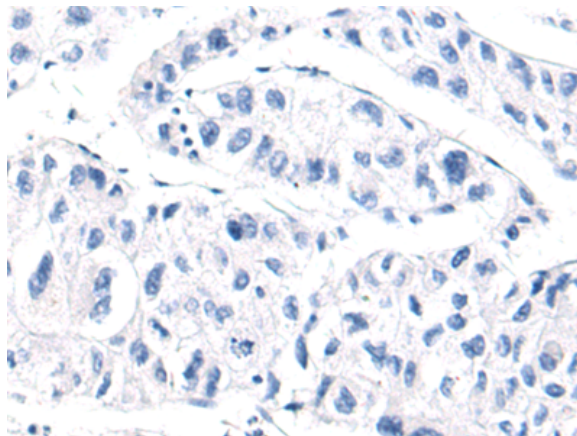
**Constituents:** PBS (without Mg<sup>2+</sup> and Ca<sup>2+</sup>), pH 7.4, 150 mM NaCl, 0.05% Sodium Azide and 40% glycerol

**Research Areas:** Metabolism

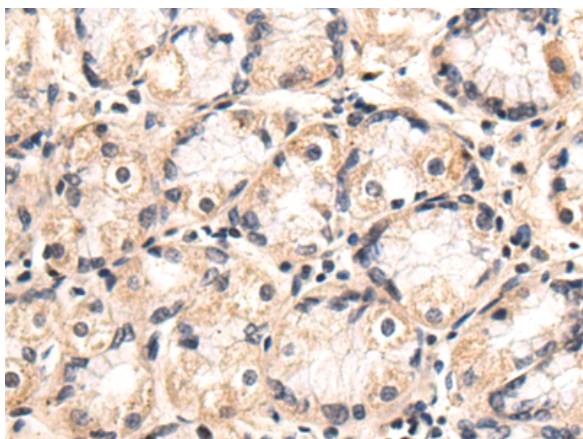
**Storage & Shipping:** Store at -20°C. Avoid repeated freezing and thawing



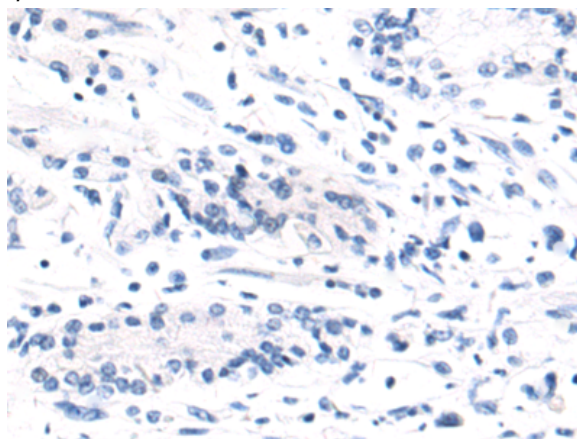
Immunohistochemistry analysis of paraffin embedded Human liver cancer tissue using 220918(SLC16A11 Antibody) at a dilution of 1/50(Cytoplasm).



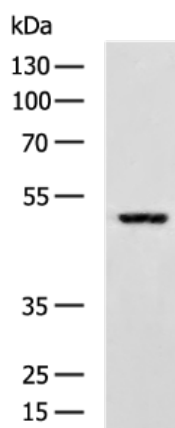
In comparison with the IHC on the left, the same paraffin-embedded Human liver cancer tissue is first treated with the synthetic peptide and then with 220918(Anti-SLC16A11 Antibody) at dilution 1/50.



The image on the left is immunohistochemistry of paraffin-embedded Human gastric cancer tissue using 220918(Anti-SLC16A11 Antibody) at a dilution of 1/50.



In comparison with the IHC on the left, the same paraffin-embedded Human gastric cancer tissue is first treated with synthetic peptide and then with D262216(Anti-SLC16A11 Antibody) at dilution 1/50.



Gel: 12%SDS-PAGE, Lysate: 40 µg;  
Lane: Mouse kidney tissue lysate;  
Primary antibody: 220918(SLC16A11 Antibody) at dilution 1/1200;  
Secondary antibody: HRP-conjugated Goat anti rabbit IgG at 1/5000 dilution;  
Exposure time: 5 seconds



# Product Description

Pioneering GTPase and Oncogene Product Development since 2010

---