

SLC16A7 RABBIT PAB

Cat.#: S219909

Product Name: Anti-SLC16A7 Rabbit Polyclonal Antibody

Synonyms: MCT2

UNIPROT ID: O60669 (Gene Accession - NP_004722)

Background: This gene is a member of the monocarboxylate transporter family. Members in this family transport metabolites, such as lactate, pyruvate, and ketone bodies. The protein encoded by this gene catalyzes the proton-linked transport of monocarboxylates and has the highest affinity for pyruvate. This protein has been reported to be more highly expressed in prostate and colorectal cancer specimens when compared to control specimens. Alternative splicing results in multiple transcript variants.

Immunogen: Synthetic peptide of human SLC16A7

Applications: ELISA, WB, IHC

Recommended Dilutions: IHC: 50-300;WB: 500-2000;ELISA: 5000-10000

Host Species: Rabbit

Clonality: Rabbit Polyclonal

Isotype: Immunogen-specific rabbit IgG

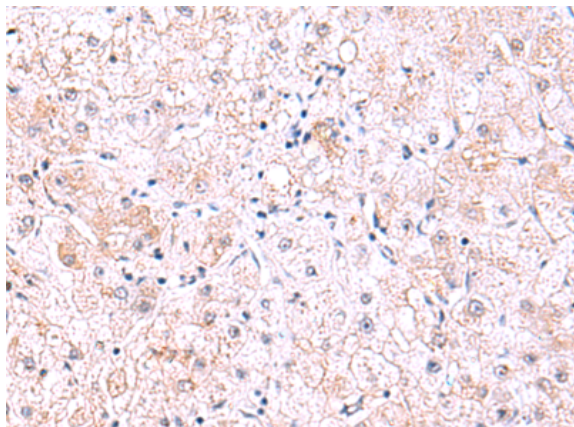
Purification: Antigen affinity purification

Species Reactivity: Human

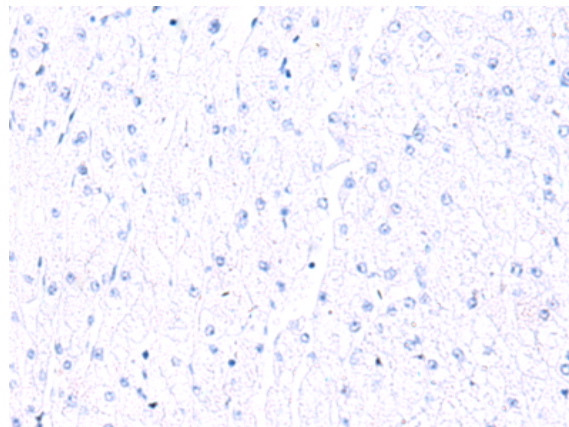
Constituents: PBS (without Mg²⁺ and Ca²⁺), pH 7.4, 150 mM NaCl, 0.05% Sodium Azide and 40% glycerol

Research Areas: Metabolism, Cancer

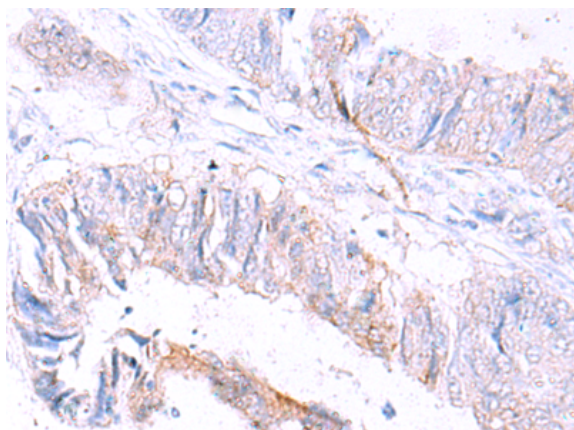
Storage & Shipping: Store at -20°C. Avoid repeated freezing and thawing



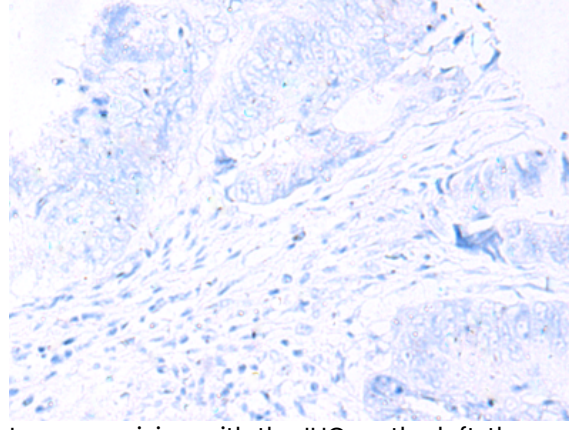
Immunohistochemistry analysis of paraffin embedded Human liver cancer tissue using 219909(SLC16A7 Antibody) at a dilution of 1/60(Cytoplasm).



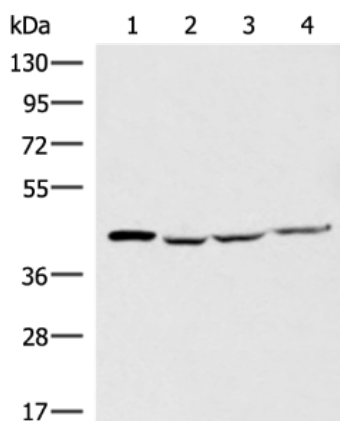
In comparison with the IHC on the left, the same paraffin-embedded Human liver cancer tissue is first treated with the synthetic peptide and then with 219909(Anti-SLC16A7 Antibody) at dilution 1/60.



The image on the left is immunohistochemistry of paraffin-embedded Human colorectal cancer tissue using 219909(Anti-SLC16A7 Antibody) at a dilution of 1/60.



In comparison with the IHC on the left, the same paraffin-embedded Human colorectal cancer tissue is first treated with synthetic peptide and then with D260595(Anti-SLC16A7 Antibody) at dilution 1/60.



Gel: 8%SDS-PAGE, Lysate: 40 µg;
 Lane 1-4: Human abdominal interstitial sarcoma tissue, A549, 293T and HepG2 cell lysates;
 Primary antibody: 219909(SLC16A7 Antibody) at dilution 1/550;
 Secondary antibody: Goat anti rabbit IgG at 1/8000 dilution;
 Exposure time: 40 seconds



Product Description

Pioneering GTPase and Oncogene Product Development since 2010
