

SLC16A8 RABBIT PAB

Cat.#: S220916

Product Name: Anti-SLC16A8 Rabbit Polyclonal Antibody

Synonyms: MCT3; REMP

UNIPROT ID: O95907 (Gene Accession - NP_037488)

Background: SLC16A8 is a member of a family of proton-coupled monocarboxylate transporters that mediate lactate transport across cell membranes. Proton-linked monocarboxylate transporter. Catalyzes the rapid transport across the plasma membrane of many monocarboxylates such as lactate, pyruvate, branched-chain oxo acids derived from leucine, valine and isoleucine, and the ketone bodies acetoacetate, beta-hydroxybutyrate and acetate.

Immunogen: Synthetic peptide of human SLC16A8

Applications: ELISA, WB, IHC

Recommended Dilutions: IHC: 40-150;WB: 500-2000;ELISA: 2000-5000

Host Species: Rabbit

Clonality: Rabbit Polyclonal

Isotype: Immunogen-specific rabbit IgG

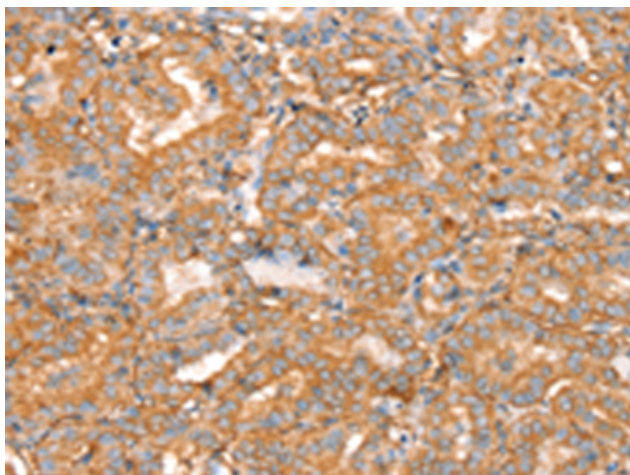
Purification: Antigen affinity purification

Species Reactivity: Human

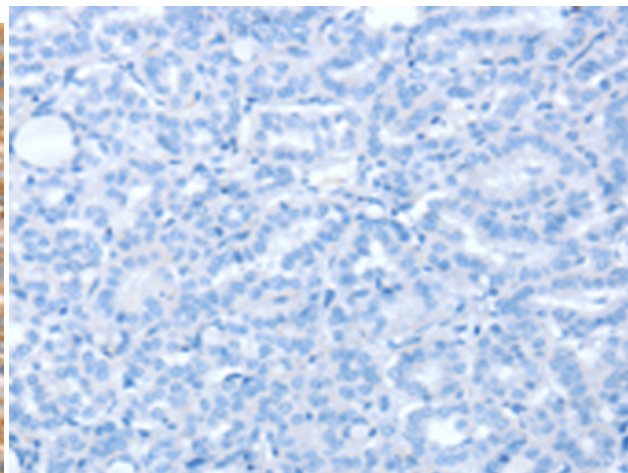
Constituents: PBS (without Mg²⁺ and Ca²⁺), pH 7.4, 150 mM NaCl, 0.05% Sodium Azide and 40% glycerol

Research Areas: Metabolism, Cancer

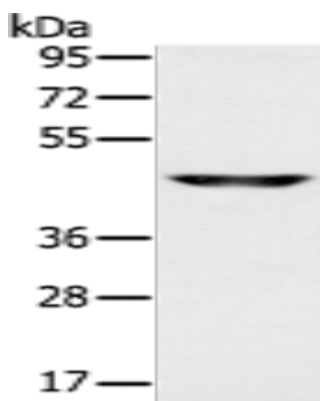
Storage & Shipping: Store at -20°C. Avoid repeated freezing and thawing



Immunohistochemistry analysis of paraffin embedded Human thyroid cancer tissue using 220916(SLC16A8 Antibody) at a dilution of 1/40(Cytoplasm or Cell membrane).



In comparison with the IHC on the left, the same paraffin-embedded Human thyroid cancer tissue is first treated with the synthetic peptide and then with 220916(Anti-SLC16A8 Antibody) at dilution 1/40.



Gel: 8%SDS-PAGE, Lysate: 40 µg;
Lane: Human fetal brain tissue;
Primary antibody: 220916(SLC16A8 Antibody)
at dilution 1/200;
Secondary antibody: Goat anti rabbit IgG at
1/8000 dilution;
Exposure time: 1 minute