

SLC17A7 RABBIT PAB

Cat.#: S213287

Product Name: Anti-SLC17A7 Rabbit Polyclonal Antibody

Synonyms: BNPI; VGLUT1

UNIPROT ID: Q9P2U7 (Gene Accession - NP_064705)

Background: The protein encoded by this gene is a vesicle-bound, sodium-dependent phosphate transporter that is specifically expressed in the neuron-rich regions of the brain. It is preferentially associated with the membranes of synaptic vesicles and functions in glutamate transport. The protein shares 82% identity with the differentiation-associated Na-dependent inorganic phosphate cotransporter and they appear to form a distinct class within the Na⁺/Pi cotransporter family.

Immunogen: Synthetic peptide of human SLC17A7

Applications: ELISA, IHC

Recommended Dilutions: IHC: 200-500; ELISA: 5000-240000

Host Species: Rabbit

Clonality: Rabbit Polyclonal

Isotype: Immunogen-specific rabbit IgG

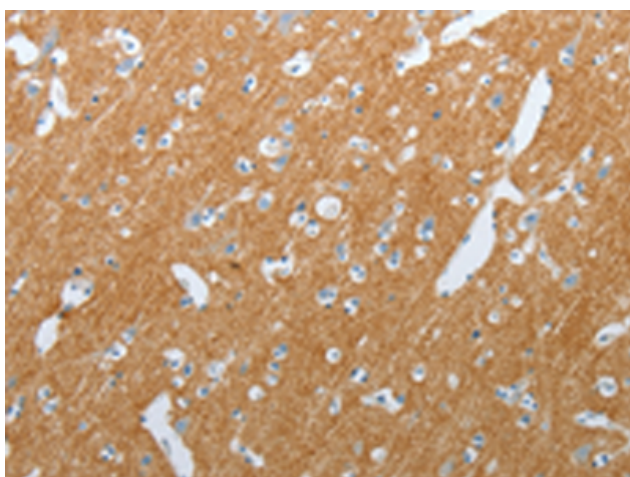
Purification: Antigen affinity purification

Species Reactivity: Human, Mouse, Rat

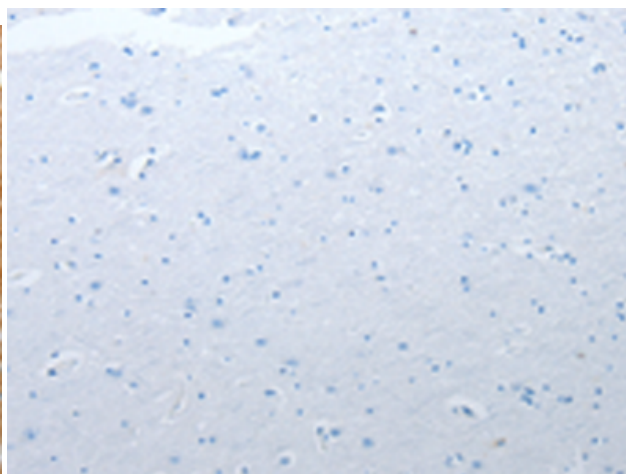
Constituents: PBS (without Mg²⁺ and Ca²⁺), pH 7.4, 150 mM NaCl, 0.05% Sodium Azide and 40% glycerol

Research Areas: Signal Transduction, Neuroscience

Storage & Shipping: Store at -20°C. Avoid repeated freezing and thawing



Immunohistochemistry analysis of paraffin embedded Human brain tissue using 213287(SLC17A7 Antibody) at a dilution of 1/200(Cytoplasm).



In comparison with the IHC on the left, the same paraffin-embedded Human brain tissue is first treated with the synthetic peptide and then with 213287(Anti-SLC17A7 Antibody) at dilution 1/200.