

## SLC17A8 RABBIT PAB

**Cat.#:** S215323

**Product Name:** Anti-SLC17A8 Rabbit Polyclonal Antibody

**Synonyms:** DFNA25; VGLUT3

**UNIPROT ID:** Q8NDX2 (Gene Accession - NP\_647480 )

**Background:** This gene encodes a vesicular glutamate transporter. The encoded protein transports the neurotransmitter glutamate into synaptic vesicles before it is released into the synaptic cleft. Mutations in this gene are the cause of autosomal-dominant nonsyndromic type 25 deafness. Alternate splicing results in multiple transcript variants.

**Immunogen:** Synthetic peptide of human SLC17A8

**Applications:** ELISA, WB, IHC

**Recommended Dilutions:** IHC: 50-200;WB: 500-2000;ELISA: 5000-10000

**Host Species:** Rabbit

**Clonality:** Rabbit Polyclonal

**Isotype:** Immunogen-specific rabbit IgG

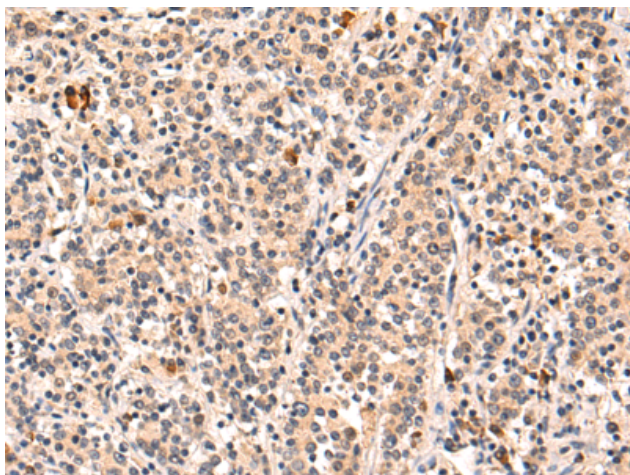
**Purification:** Antigen affinity purification

**Species Reactivity:** Human, Mouse

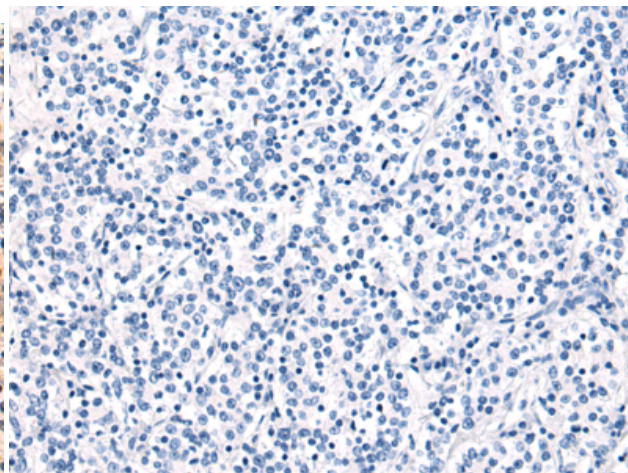
**Constituents:** PBS (without Mg<sup>2+</sup> and Ca<sup>2+</sup>), pH 7.4, 150 mM NaCl, 0.05% Sodium Azide and 40% glycerol

**Research Areas:** Neuroscience

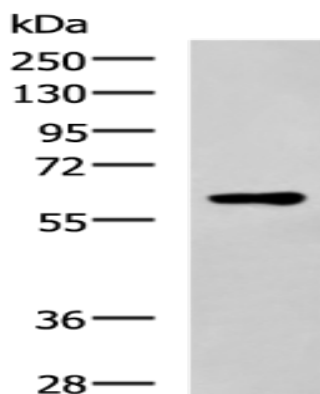
**Storage & Shipping:** Store at -20°C. Avoid repeated freezing and thawing



Immunohistochemistry analysis of paraffin embedded Human gastric cancer tissue using 215323(SLC17A8 Antibody) at a dilution of 1/50(Cytoplasm).



In comparison with the IHC on the left, the same paraffin-embedded Human gastric cancer tissue is first treated with the synthetic peptide and then with 215323(Anti-SLC17A8 Antibody) at dilution 1/50.



Gel: 8%SDS-PAGE, Lysate: 40  $\mu$ g;  
Lane: Mouse small intestines tissue lysate;  
Primary antibody: 215323(SLC17A8 Antibody)  
at dilution 1/700;  
Secondary antibody: HRP-conjugated Goat  
anti rabbit IgG at 1/5000 dilution;  
Exposure time: 90 seconds