

SLC18A1 RABBIT PAB

Cat.#: S213292

Product Name: Anti-SLC18A1 Rabbit Polyclonal Antibody

Synonyms: CGAT, VAT1, VMAT1

UNIPROT ID: P54219 (Gene Accession - NP_001135797)

Background: The vesicular monoamine transporter acts to accumulate cytosolic monoamines into vesicles, using the proton gradient maintained across the vesicular membrane. Its proper function is essential to the correct activity of the monoaminergic systems that have been implicated in several human neuropsychiatric disorders. The transporter is a site of action of important drugs, including reserpine and tetrabenazine.

Immunogen: Synthetic peptide of human SLC18A1

Applications: ELISA, WB, IHC

Recommended Dilutions: IHC: Oct-50;WB: 500-2000;ELISA: 2000-20000

Host Species: Rabbit

Clonality: Rabbit Polyclonal

Isotype: Immunogen-specific rabbit IgG

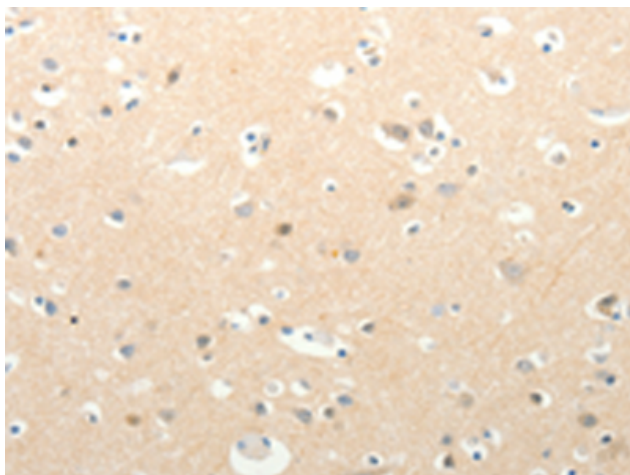
Purification: Antigen affinity purification

Species Reactivity: Human

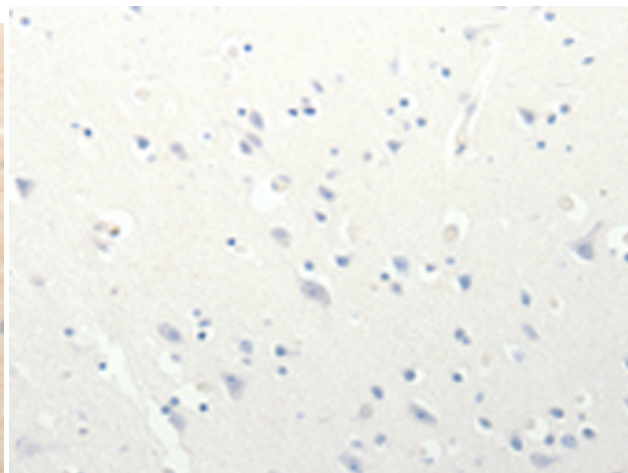
Constituents: PBS (without Mg²⁺ and Ca²⁺), pH 7.4, 150 mM NaCl, 0.05% Sodium Azide and 40% glycerol

Research Areas: Neuroscience

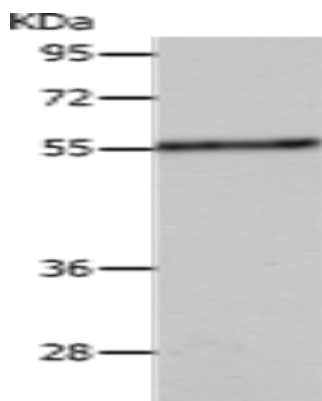
Storage & Shipping: Store at -20°C. Avoid repeated freezing and thawing



Immunohistochemistry analysis of paraffin embedded Human brain tissue using 213292(SLC18A1 Antibody) at a dilution of 1/13(Cytoplasm).



In comparison with the IHC on the left, the same paraffin-embedded Human brain tissue is first treated with the synthetic peptide and then with 213292(Anti-SLC18A1 Antibody) at dilution 1/13.



Gel: 10%SDS-PAGE, Lysate: 40 µg;
Lane: A549 cells;
Primary antibody: 213292(SLC18A1 Antibody) at dilution 1/400;
Secondary antibody: Goat anti rabbit IgG at 1/8000 dilution;
Exposure time: 45 seconds