

## SLC18A2 RABBIT PAB

**Cat.#:** S213293

**Product Name:** Anti-SLC18A2 Rabbit Polyclonal Antibody

**Synonyms:** SVAT, SVMT, VAT2, VMAT2

**UNIPROT ID:** Q05940 (Gene Accession - NP\_003045 )

**Background:** The vesicular monoamine transporter acts to accumulate cytosolic monoamines into synaptic vesicles, using the proton gradient maintained across the synaptic vesicular membrane. Its proper function is essential to the correct activity of the monoaminergic systems that have been implicated in several human neuropsychiatric disorders. The transporter is a site of action of important drugs, including reserpine and tetrabenazine .

**Immunogen:** Synthetic peptide of human SLC18A2

**Applications:** ELISA, WB, IHC

**Recommended Dilutions:** IHC: 25-100;WB: 500-2000;ELISA: 2000-60000

**Host Species:** Rabbit

**Clonality:** Rabbit Polyclonal

**Isotype:** Immunogen-specific rabbit IgG

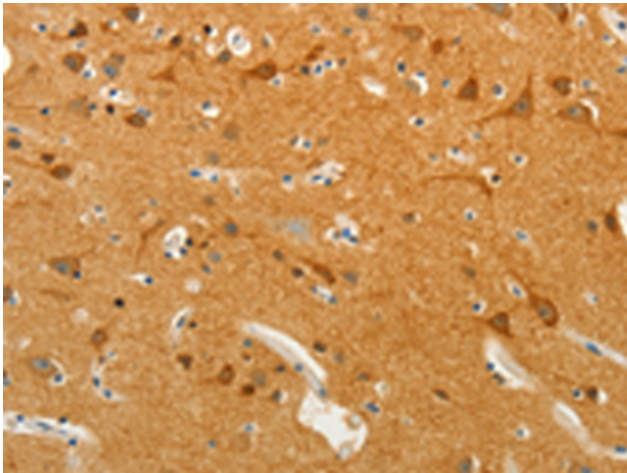
**Purification:** Antigen affinity purification

**Species Reactivity:** Human, Mouse, Rat

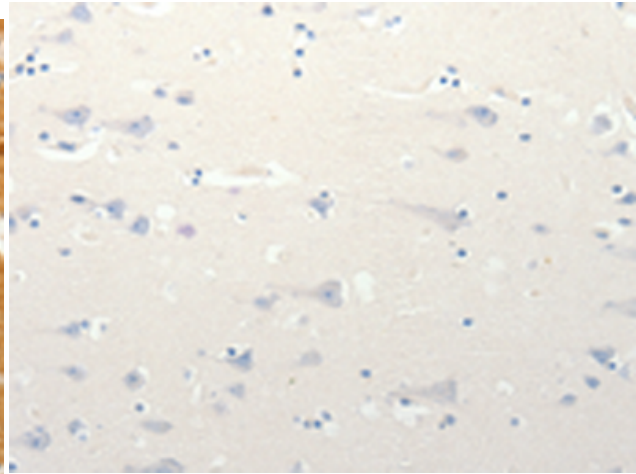
**Constituents:** PBS (without Mg<sup>2+</sup> and Ca<sup>2+</sup>), pH 7.4, 150 mM NaCl, 0.05% Sodium Azide and 40% glycerol

**Research Areas:** Neuroscience

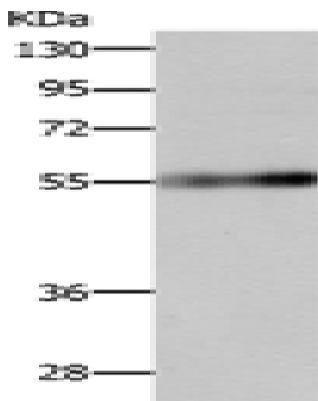
**Storage & Shipping:** Store at -20°C. Avoid repeated freezing and thawing



Immunohistochemistry analysis of paraffin embedded Human brain tissue using 213293(SLC18A2 Antibody) at a dilution of 1/13(Cytoplasm).



In comparison with the IHC on the left, the same paraffin-embedded Human brain tissue is first treated with the synthetic peptide and then with 213293(Anti-SLC18A2 Antibody) at dilution 1/13.



Gel: 10%SDS-PAGE, Lysate: 40 µg;  
Lane: Human cervical cancer tissue;  
Primary antibody: 213293(SLC18A2 Antibody) at dilution 1/400;  
Secondary antibody: Goat anti rabbit IgG at 1/8000 dilution;  
Exposure time: 45 seconds