

## SLC1A5 RABBIT PAB

**Cat.#:** S213736

**Product Name:** Anti-SLC1A5 Rabbit Polyclonal Antibody

**Synonyms:** R16; AAAT; ATBO; M7V1; RDRC; ASCT2; M7VS1

**UNIPROT ID:** Q15758 (Gene Accession - NP\_005619 )

**Background:** The SLC1A5 gene encodes a sodium-dependent neutral amino acid transporter that can act as a receptor for RD114/type D retrovirus (Larriba et al., 2001 [PubMed 11781704]).

**Immunogen:** Synthetic peptide of human SLC1A5

**Applications:** ELISA, IHC

**Recommended Dilutions:** IHC: 50-200; ELISA: 2000-5000

**Host Species:** Rabbit

**Clonality:** Rabbit Polyclonal

**Isotype:** Immunogen-specific rabbit IgG

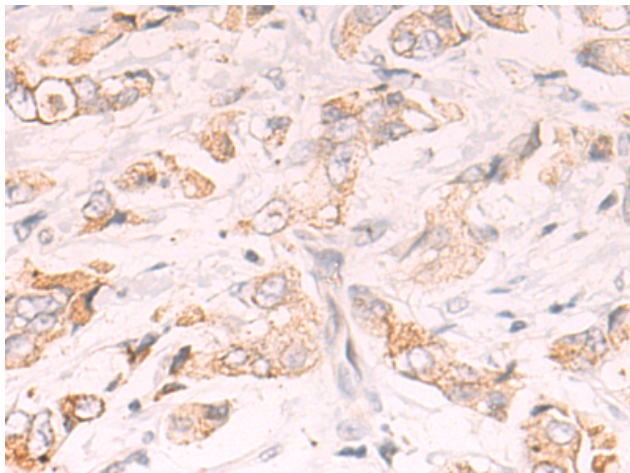
**Purification:** Antigen affinity purification

**Species Reactivity:** Human

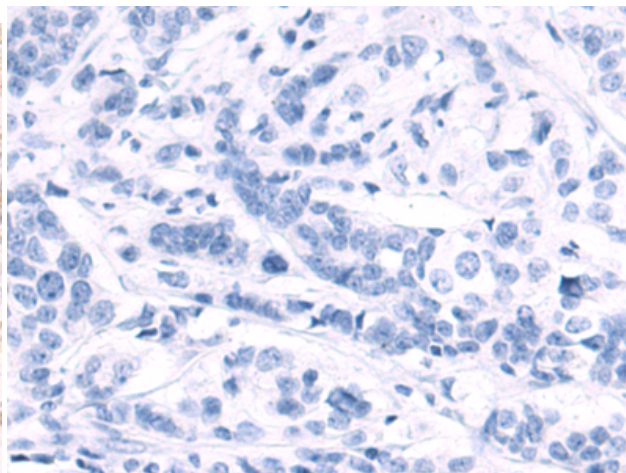
**Constituents:** PBS (without Mg<sup>2+</sup> and Ca<sup>2+</sup>), pH 7.4, 150 mM NaCl, 0.05% Sodium Azide and 40% glycerol

**Research Areas:** Metabolism

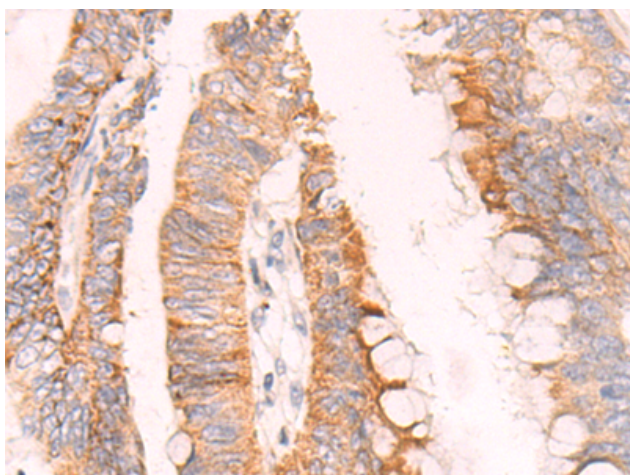
**Storage & Shipping:** Store at -20°C. Avoid repeated freezing and thawing



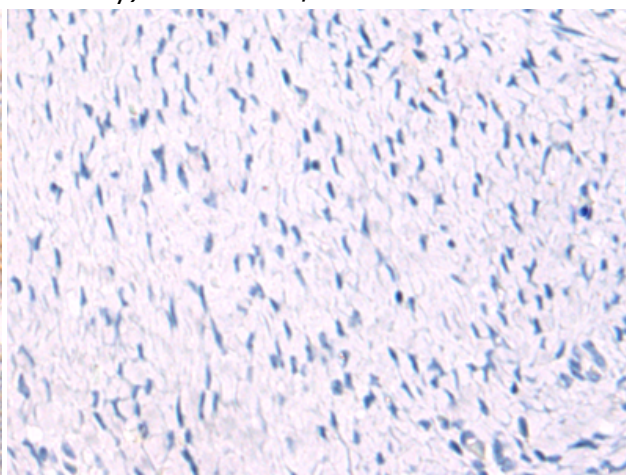
Immunohistochemistry analysis of paraffin-embedded Human breast cancer tissue using 213736 (SLC1A5 Antibody) at a dilution of 1/50 (Cell membrane and Cytoplasm).



In comparison with the IHC on the left, the same paraffin-embedded Human breast cancer tissue is first treated with the synthetic peptide and then with 213736 (Anti-SLC1A5 Antibody) at dilution 1/50.



The image on the left is immunohistochemistry of paraffin-embedded Human colorectal cancer tissue using 213736 (Anti-SLC1A5 Antibody) at a dilution of 1/50.



In comparison with the IHC on the left, the same paraffin-embedded Human colorectal cancer tissue is first treated with synthetic peptide and then with D160740 (Anti-SLC1A5 Antibody) at dilution 1/50.