

## SLC22A3 RABBIT PAB

**Cat.#:** S220202

**Product Name:** Anti-SLC22A3 Rabbit Polyclonal Antibody

**Synonyms:** EMT; EMTH; OCT3

**UNIPROT ID:** O75751 (Gene Accession - NP\_068812 )

**Background:** Polyspecific organic cation transporters in the liver, kidney, intestine, and other organs are critical for elimination of many endogenous small organic cations as well as a wide array of drugs and environmental toxins. This gene is one of three similar cation transporter genes located in a cluster on chromosome 6. The encoded protein contains twelve putative transmembrane domains and is a plasma integral membrane protein.

**Immunogen:** Synthetic peptide of human SLC22A3

**Applications:** ELISA, WB, IHC

**Recommended Dilutions:** IHC: 50–200;WB: 500–2000;ELISA: 2000–5000

**Host Species:** Rabbit

**Clonality:** Rabbit Polyclonal

**Isotype:** Immunogen-specific rabbit IgG

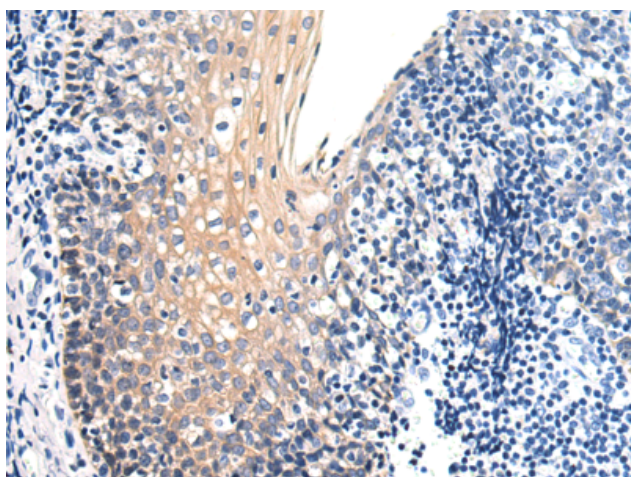
**Purification:** Antigen affinity purification

**Species Reactivity:** Human, Mouse, Rat

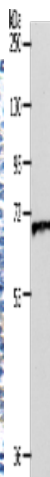
**Constituents:** PBS (without Mg<sup>2+</sup> and Ca<sup>2+</sup>), pH 7.4, 150 mM NaCl, 0.05% Sodium Azide and 40% glycerol

**Research Areas:** Metabolism, Neuroscience

**Storage & Shipping:** Store at -20°C. Avoid repeated freezing and thawing



Immunohistochemistry analysis of paraffin-embedded Human tonsil tissue using 220202(SLC22A3 Antibody) at a dilution of 1/40(Cytoplasm and Cell membrane).



Gel: 10%SDS-PAGE, Lysate: 40 µg;  
Lane: Human liver cancer tissue lysate;  
Primary antibody: 220202(SLC22A3 Antibody) at dilution 1/600;  
Secondary antibody: Goat anti rabbit IgG at 1/8000 dilution;  
Exposure time: 1 minute