

SLC24A3 RABBIT PAB

Cat.#: S220920

Product Name: Anti-SLC24A3 Rabbit Polyclonal Antibody

Synonyms: NCKX3

UNIPROT ID: Q9HC58 (Gene Accession - NP_065740)

Background: Plasma membrane sodium/calcium exchangers are an important component of intracellular calcium homeostasis and electrical conduction. Potassium-dependent sodium/calcium exchangers such as SLC24A3 are believed to transport 1 intracellular calcium and 1 potassium ion in exchange for 4 extracellular sodium ions.

Immunogen: Synthetic peptide of human SLC24A3

Applications: ELISA, IHC

Recommended Dilutions: IHC: 25-100; ELISA: 1000-2000

Host Species: Rabbit

Clonality: Rabbit Polyclonal

Isotype: Immunogen-specific rabbit IgG

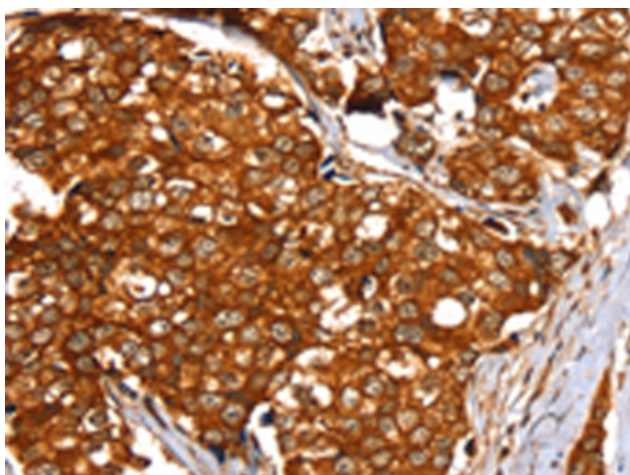
Purification: Antigen affinity purification

Species Reactivity: Human, Mouse, Rat

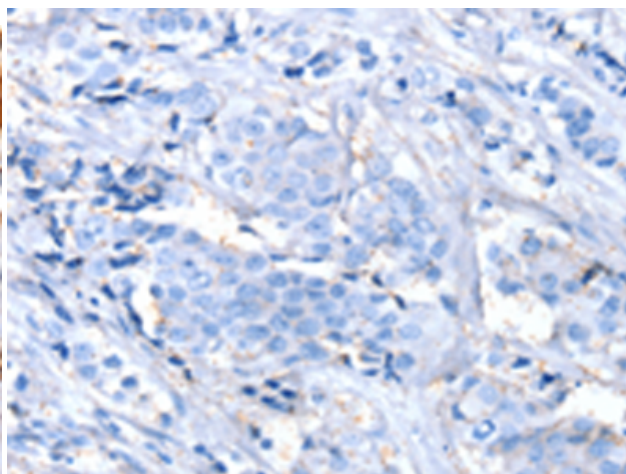
Constituents: PBS (without Mg²⁺ and Ca²⁺), pH 7.4, 150 mM NaCl, 0.05% Sodium Azide and 40% glycerol

Research Areas: Metabolism

Storage & Shipping: Store at -20°C. Avoid repeated freezing and thawing



Immunohistochemistry analysis of paraffin embedded Human breast cancer tissue using 220920(SLC24A3 Antibody) at a dilution of 1/20(Cytoplasm or Cell membrane).



In comparison with the IHC on the left, the same paraffin-embedded Human breast cancer tissue is first treated with the synthetic peptide and then with 220920(Anti-SLC24A3 Antibody) at dilution 1/20.