

SLC24A4 RABBIT PAB

Cat.#: S220921

Product Name: Anti-SLC24A4 Rabbit Polyclonal Antibody

Synonyms: AI2A5; NCKX4; SHEP6; SLC24A2

UNIPROT ID: Q8NFF2 (Gene Accession - NP_705932)

Background: This gene encodes a member of the potassium-dependent sodium/calcium exchanger protein family. Alternative splicing results in multiple transcript variants. Transports 1 Ca²⁺ and 1 K⁺ in exchange for 4 Na⁺. Controls the rapid response termination and proper regulation of adaptation in olfactory sensory neurons (OSNs) which subsequently influences how odor information is encoded and perceived.

Immunogen: Synthetic peptide of human SLC24A4

Applications: ELISA, IHC

Recommended Dilutions: IHC: 25-100; ELISA: 2000-5000

Host Species: Rabbit

Clonality: Rabbit Polyclonal

Isotype: Immunogen-specific rabbit IgG

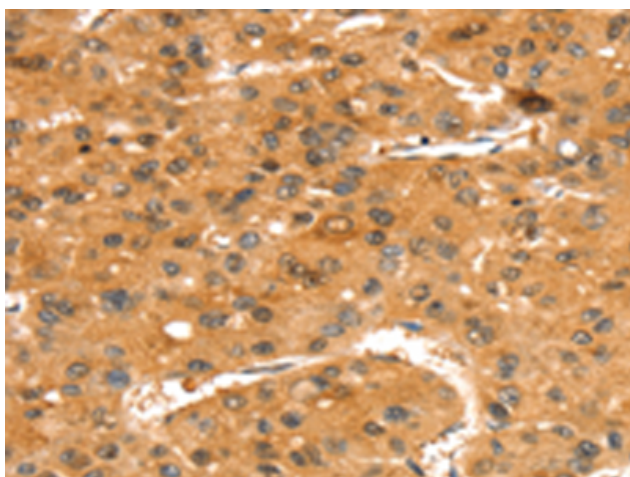
Purification: Antigen affinity purification

Species Reactivity: Human

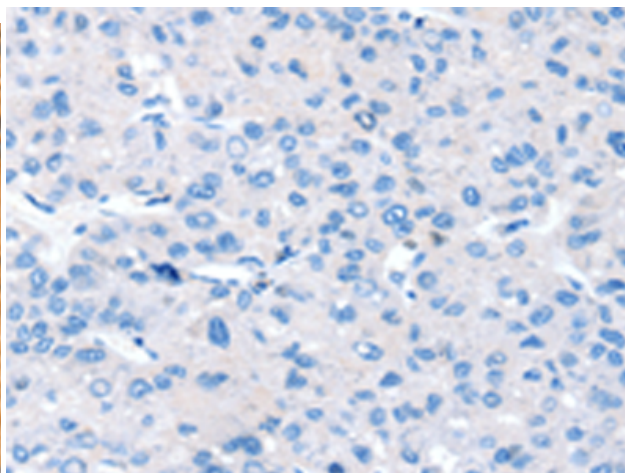
Constituents: PBS (without Mg²⁺ and Ca²⁺), pH 7.4, 150 mM NaCl, 0.05% Sodium Azide and 40% glycerol

Research Areas: Metabolism

Storage & Shipping: Store at -20°C. Avoid repeated freezing and thawing



Immunohistochemistry analysis of paraffin embedded Human liver cancer tissue using 220921(SLC24A4 Antibody) at a dilution of 1/35(Cytoplasm and Cell membrane).



In comparison with the IHC on the left, the same paraffin-embedded Human liver cancer tissue is first treated with the synthetic peptide and then with 220921(Anti-SLC24A4 Antibody) at dilution 1/35.