

SLC24A5 RABBIT PAB

Cat.#: S220922

Product Name: Anti-SLC24A5 Rabbit Polyclonal Antibody

Synonyms: JSX; OCA6; NCKX5; SHEP4

UNIPROT ID: Q71RS6 (Gene Accession - NP_995322)

Background: This gene is a member of the potassium-dependent sodium/calcium exchanger family and encodes an intracellular membrane protein with 2 large hydrophilic loops and 2 sets of multiple transmembrane-spanning segments. Sequence variation in this gene has been associated with differences in skin pigmentation.

Immunogen: Synthetic peptide of human SLC24A5

Applications: ELISA, IHC

Recommended Dilutions: IHC: 35-200; ELISA: 5000-10000

Host Species: Rabbit

Clonality: Rabbit Polyclonal

Isotype: Immunogen-specific rabbit IgG

Purification: Antigen affinity purification

Species Reactivity: Human

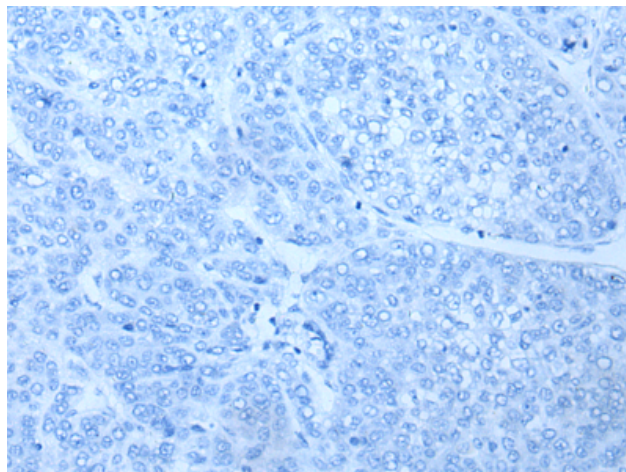
Constituents: PBS (without Mg²⁺ and Ca²⁺), pH 7.4, 150 mM NaCl, 0.05% Sodium Azide and 40% glycerol

Research Areas: Metabolism

Storage & Shipping: Store at -20°C. Avoid repeated freezing and thawing



Immunohistochemistry analysis of paraffin embedded Human liver cancer tissue using 220922(SLC24A5 Antibody) at a dilution of 1/50(Cell membrane).



In comparison with the IHC on the left, the same paraffin-embedded Human liver cancer tissue is first treated with the synthetic peptide and then with 220922(Anti-SLC24A5 Antibody) at dilution 1/50.