

## SLC25A1 RABBIT PAB

**Cat.#:** S217822

**Product Name:** Anti-SLC25A1 Rabbit Polyclonal Antibody

**Synonyms:** CIC; CTP; SEA; CMS23; D2L2AD; SLC20A3

**UNIPROT ID:** P53007 (Gene Accession - BC004980 )

**Background:** This gene encodes a member of the mitochondrial carrier subfamily of solute carrier proteins. Members of this family include nuclear-encoded transporters that translocate small metabolites across the mitochondrial membrane. This protein regulates the movement of citrate across the inner membranes of the mitochondria. Mutations in this gene have been associated with combined D-2- and L-2-hydroxyglutaric aciduria. Pseudogenes of this gene have been identified on chromosomes 7, 11, 16, and 19. Alternative splicing results in multiple transcript variants.

**Immunogen:** Fusion protein of human SLC25A1

**Applications:** ELISA, IHC

**Recommended Dilutions:** IHC: 50-200; ELISA: 5000-10000

**Host Species:** Rabbit

**Clonality:** Rabbit Polyclonal

**Isotype:** Immunogen-specific rabbit IgG

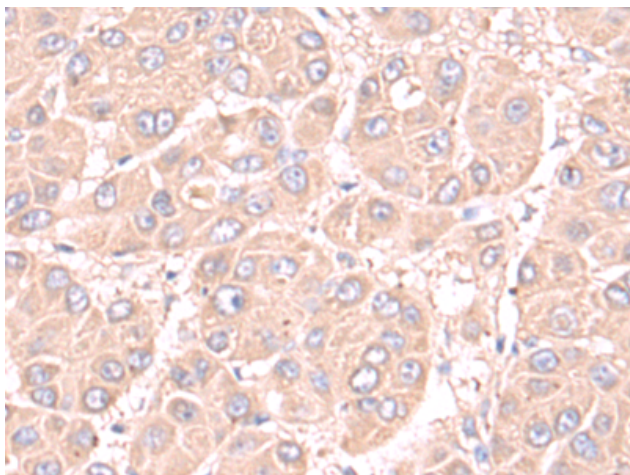
**Purification:** Antigen affinity purification

**Species Reactivity:** Human, Mouse, Rat

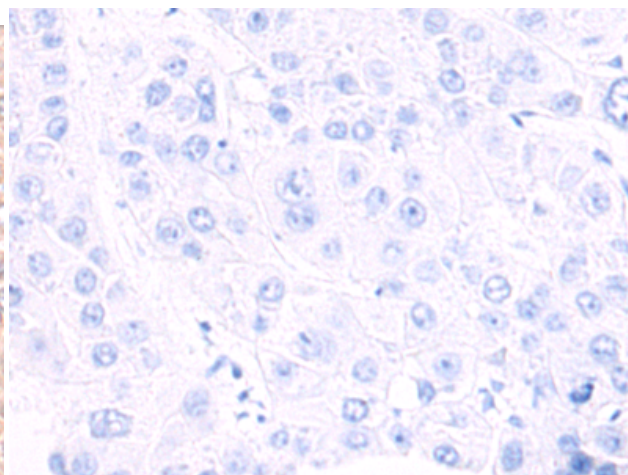
**Constituents:** PBS (without Mg<sup>2+</sup> and Ca<sup>2+</sup>), pH 7.4, 150 mM NaCl, 0.05% Sodium Azide and 40% glycerol

**Research Areas:** Metabolism

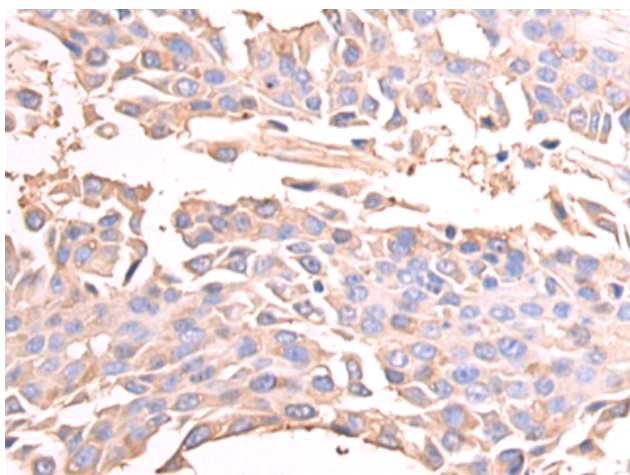
**Storage & Shipping:** Store at -20°C. Avoid repeated freezing and thawing



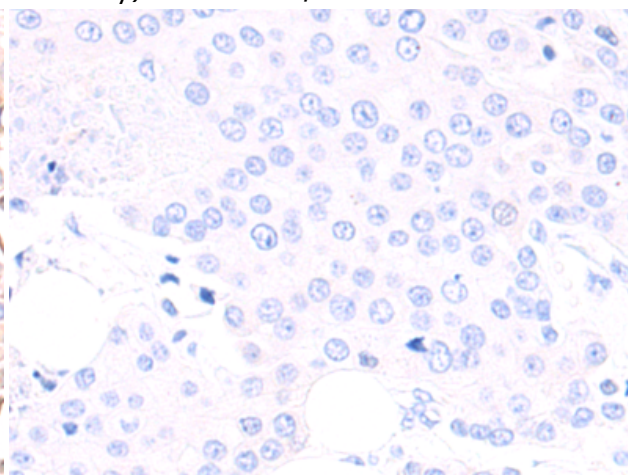
Immunohistochemistry analysis of paraffin embedded Human liver cancer tissue using 217822 (SLC25A1 Antibody) at a dilution of 1/55 (Cytoplasm).



In comparison with the IHC on the left, the same paraffin-embedded Human liver cancer tissue is first treated with the fusion protein and then with 217822 (Anti-SLC25A1 Antibody) at dilution 1/55.



The image on the left is immunohistochemistry of paraffin-embedded Human breast cancer tissue using 217822 (Anti-SLC25A1 Antibody) at a dilution of 1/55.



In comparison with the IHC on the left, the same paraffin-embedded Human breast cancer tissue is first treated with fusion protein and then with D223161 (Anti-SLC25A1 Antibody) at dilution 1/55.