

SLC25A12 RABBIT MAB

Cat.#: N262906

Product Name: Anti-SLC25A12 Rabbit Monoclonal Antibody

Synonyms: AGC1; ARALAR; EIEE39

UNIPROT ID: O75746

Background: Mitochondrial and calcium-binding carrier that catalyzes the calcium-dependent exchange of cytoplasmic glutamate with mitochondrial aspartate across the mitochondrial inner membrane (PubMed:11566871, PubMed:25410934). May have a function in the urea cycle (PubMed:11566871).

Immunogen: A synthetic peptide of human SLC25A12

Applications: WB,IP

Recommended Dilutions: WB: 1/500-1/1000 IP: 1/20

Host Species: Rabbit

Clonality: Rabbit Monoclonal

Clone ID: R06-9E3

MW: Calculated MW: 75 kDa; Observed MW: 75 kDa

Isotype: IgG

Purification: Affinity Purified

Species Reactivity: Mouse,Rat

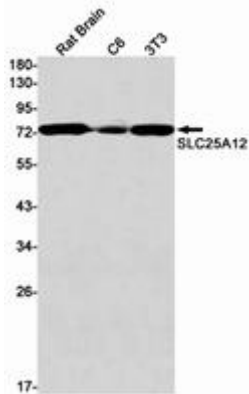
Conjugation: Unconjugated

Modification: Unmodified

Constituents: PBS (without Mg²⁺ and Ca²⁺), pH 7.3 containing 50% glycerol, 0.5% BSA and 0.02% sodium azide

Research Areas: Neuroscience

Storage & Shipping: Store at -20°C. Avoid repeated freezing and thawing



Western blot analysis of SLC25A12 in rat Brain, C6, 3T3 lysates using SLC25A12 antibody.