

SLC25A2 RABBIT PAB

Cat.#: S211562

Product Name: Anti-SLC25A2 Rabbit Polyclonal Antibody

Synonyms: ORC2; ORNT2

UNIPROT ID: Q9BXI2 (Gene Accession - BC100935)

Background: Located between the protocadherin beta and gamma gene clusters on chromosome 5, this intronless gene encodes a protein that is highly similar to an ornithine transporter localized in the mitochondrial inner membrane. The encoded protein most likely plays a role in metabolism as a mitochondrial transport protein.

Immunogen: Fusion protein of human SLC25A2

Applications: ELISA, IHC

Recommended Dilutions: IHC: 20-100; ELISA: 2000-5000

Host Species: Rabbit

Clonality: Rabbit Polyclonal

Isotype: Immunogen-specific rabbit IgG

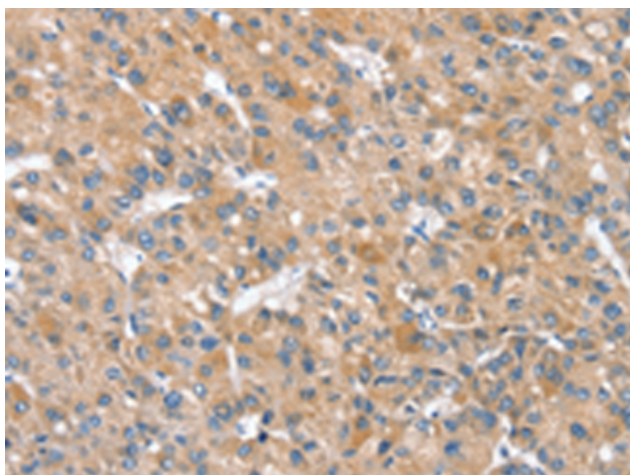
Purification: Antigen affinity purification

Species Reactivity: Human

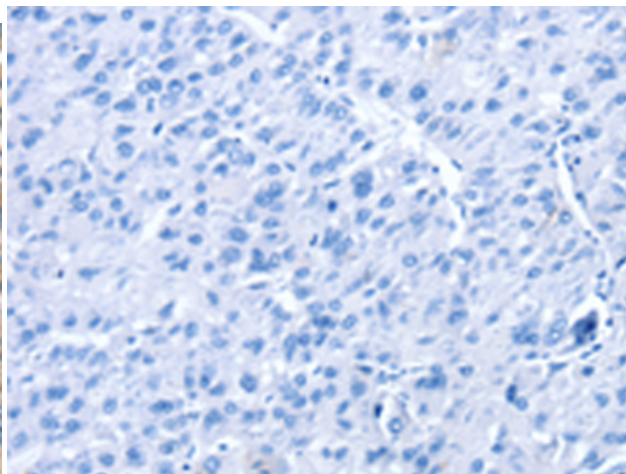
Constituents: PBS (without Mg²⁺ and Ca²⁺), pH 7.4, 150 mM NaCl, 0.05% Sodium Azide and 40% glycerol

Research Areas: Signal Transduction

Storage & Shipping: Store at -20°C. Avoid repeated freezing and thawing



Immunohistochemistry analysis of paraffin embedded Human liver cancer tissue using 211562(SLC25A2 Antibody) at a dilution of 1/20(Cytoplasm).



In comparison with the IHC on the left, the same paraffin-embedded Human liver cancer tissue is first treated with the fusion protein and then with 211562(Anti-SLC25A2 Antibody) at dilution 1/20.