

SLC25A21 RABBIT PAB

Cat.#: S221296

Product Name: Anti-SLC25A21 Rabbit Polyclonal Antibody

Synonyms: ODC; ODC1

UNIPROT ID: Q9BQT8 (Gene Accession - NP_085134)

Background: SLC25A21 is a homolog of the *S. cerevisiae* ODC proteins, mitochondrial carriers that transport C5–C7 oxodicarboxylates across inner mitochondrial membranes. One of the species transported by ODC is 2-oxoadipate, a common intermediate in the catabolism of lysine, tryptophan, and hydroxylysine in mammals. Within mitochondria, 2-oxoadipate is converted into acetyl-CoA.

Immunogen: Synthetic peptide of human SLC25A21

Applications: ELISA, IHC

Recommended Dilutions: IHC: 20–100; ELISA: 5000–10000

Host Species: Rabbit

Clonality: Rabbit Polyclonal

Isotype: Immunogen-specific rabbit IgG

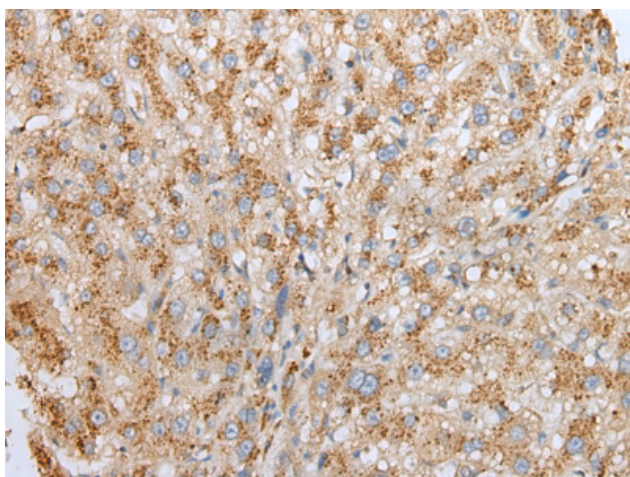
Purification: Antigen affinity purification

Species Reactivity: Human

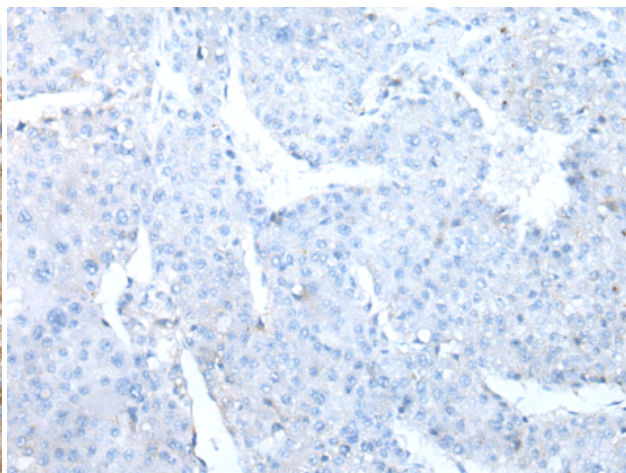
Constituents: PBS (without Mg²⁺ and Ca²⁺), pH 7.4, 150 mM NaCl, 0.05% Sodium Azide and 40% glycerol

Research Areas: Metabolism

Storage & Shipping: Store at -20°C. Avoid repeated freezing and thawing



Immunohistochemistry analysis of paraffin embedded Human liver cancer tissue using 221296(SLC25A21 Antibody) at a dilution of 1/25(Cytoplasm).



In comparison with the IHC on the left, the same paraffin-embedded Human liver cancer tissue is first treated with the synthetic peptide and then with 221296(Anti-SLC25A21 Antibody) at dilution 1/25.