

SLC26A6 RABBIT PAB

Cat.#: S214697

Product Name: Anti-SLC26A6 Rabbit Polyclonal Antibody

Synonyms:

UNIPROT ID: Q9BXS9 (Gene Accession - NP_075062)

Background: This gene belongs to the solute carrier 26 family, whose members encode anion transporter proteins. This particular family member encodes a protein involved in transporting chloride, oxalate, sulfate and bicarbonate. Alternatively spliced transcript variants encoding distinct isoforms have been described.

Immunogen: Synthetic peptide of human SLC26A6

Applications: ELISA, IHC

Recommended Dilutions: IHC: 25-100; ELISA: 1000-2000

Host Species: Rabbit

Clonality: Rabbit Polyclonal

Isotype: Immunogen-specific rabbit IgG

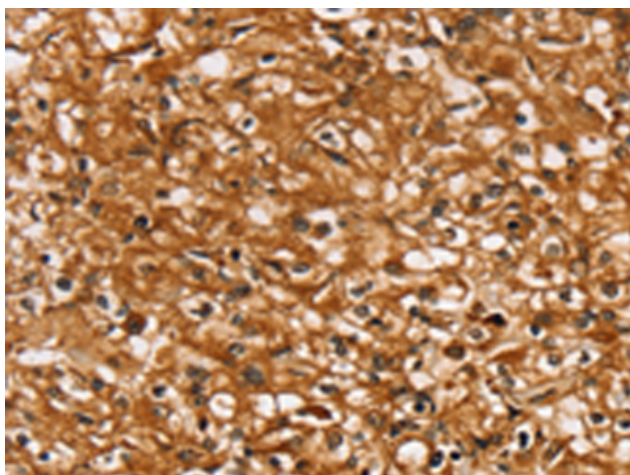
Purification: Antigen affinity purification

Species Reactivity: Human

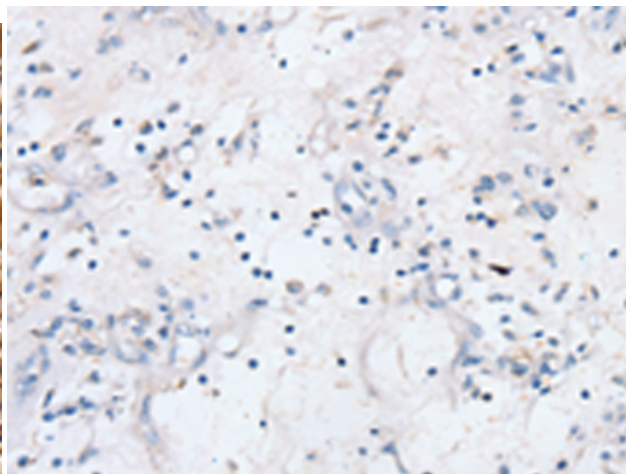
Constituents: PBS (without Mg²⁺ and Ca²⁺), pH 7.4, 150 mM NaCl, 0.05% Sodium Azide and 40% glycerol

Research Areas: Metabolism

Storage & Shipping: Store at -20°C. Avoid repeated freezing and thawing



Immunohistochemistry analysis of paraffin embedded Human prostate cancer tissue using 214697(SLC26A6 Antibody) at a dilution of 1/20(Cytoplasm or Cell membrane).



In comparison with the IHC on the left, the same paraffin-embedded Human prostate cancer tissue is first treated with the synthetic peptide and then with 214697(Anti-SLC26A6 Antibody) at dilution 1/20.