

SLC27A4 RABBIT MAB

Cat.#: N262907

Product Name: Anti-SLC27A4 Rabbit Monoclonal Antibody

Synonyms: SLC27A4; ACSVL4; FATP4; Long-chain fatty acid transport protein 4; FATP-4; Fatty acid transport protein 4; Solute carrier family 27 member 4

UNIPROT ID: Q6P1M0

Background: plays a role in the transport of long chain fatty acids across the plasma membrane. It has acyl-coA ligase activity for long chain and very long chain fatty acids.

Immunogen: Recombinant protein of human SLC27A4/FATP4

Applications: WB, ICC/IF, IP

Recommended Dilutions: WB: 1/500-1/1000 IF: 1/50-1/200 IP: 1/20

Host Species: Rabbit

Clonality: Rabbit Monoclonal

Clone ID: R01-3C7

MW: Calculated MW: 72 kDa; Observed MW: 72 kDa

Isotype: IgG

Purification: Affinity Purified

Species Reactivity: Human

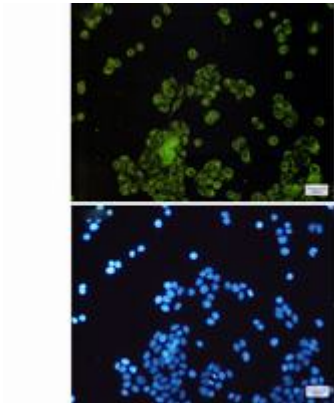
Conjugation: Unconjugated

Modification: Unmodified

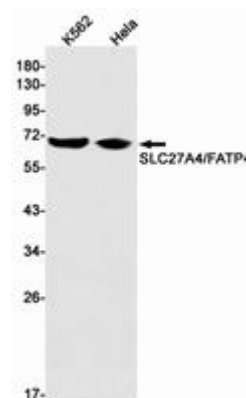
Constituents: PBS (without Mg²⁺ and Ca²⁺), pH 7.3 containing 50% glycerol, 0.5% BSA and 0.02% sodium azide

Research Areas: Neuroscience

Storage & Shipping: Store at -20°C. Avoid repeated freezing and thawing



Immunocytochemistry analysis of SLC27A4/FATP4 (green) in HeLa using SLC27A4/FATP4 antibody, and DAPI (blue)



Western blot analysis of SLC27A4/FATP4 in K562, HeLa lysates using SLC27A4 antibody.