

## SLC28A1 RABBIT PAB

**Cat.#:** S222325

**Product Name:** Anti-SLC28A1 Rabbit Polyclonal Antibody

**Synonyms:** CNT1; HCNT1; URCTU

**UNIPROT ID:** O00337 (Gene Accession - NP\_001274691 )

**Background:** Enables azole transmembrane transporter activity; cytidine transmembrane transporter activity; and uridine transmembrane transporter activity. Involved in azole transmembrane transport; nucleoside transport; and pyrimidine-containing compound transmembrane transport. Located in cytosol; nuclear speck; and plasma membrane.

**Immunogen:** Synthetic peptide of human SLC28A1

**Applications:** ELISA, WB, IHC

**Recommended Dilutions:** IHC: 50-200;WB: 500-2000;ELISA: 5000-10000

**Host Species:** Rabbit

**Clonality:** Rabbit Polyclonal

**Isotype:** Immunogen-specific rabbit IgG

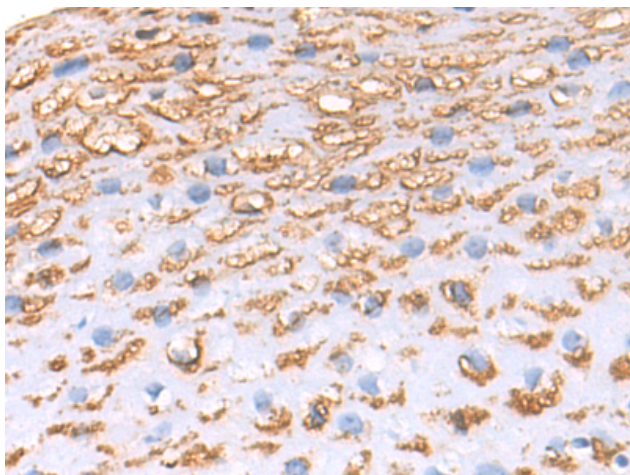
**Purification:** Antigen affinity purification

**Species Reactivity:** Human

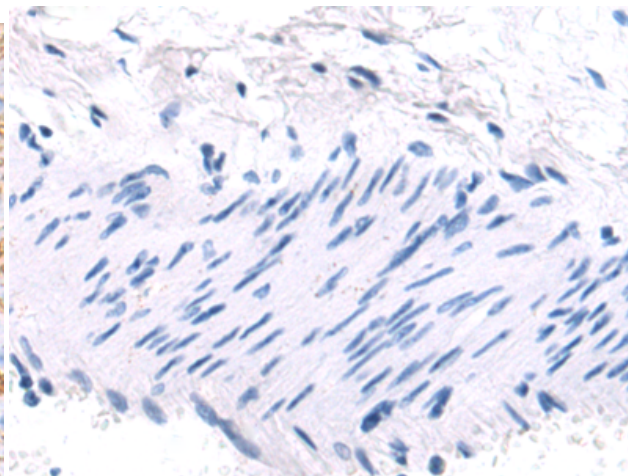
**Constituents:** PBS (without Mg<sup>2+</sup> and Ca<sup>2+</sup>), pH 7.4, 150 mM NaCl, 0.05% Sodium Azide and 40% glycerol

**Research Areas:** Cell Biology

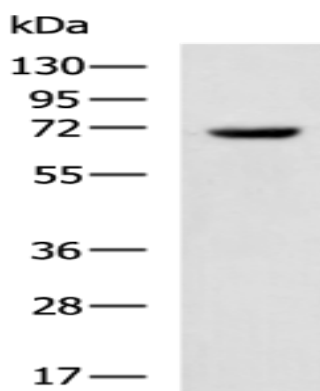
**Storage & Shipping:** Store at -20°C. Avoid repeated freezing and thawing



Immunohistochemistry analysis of paraffin embedded Human esophagus cancer tissue using 222325(SLC28A1 Antibody) at a dilution of 1/50(Cell membrane).



In comparison with the IHC on the left, the same paraffin-embedded Human esophagus cancer tissue is first treated with the synthetic peptide and then with 222325(Anti-SLC28A1 Antibody) at dilution 1/50.



Gel: 8%SDS-PAGE, Lysate: 40  $\mu$ g;  
Lane: 293T cell lysate;  
Primary antibody: 222325(SLC28A1 Antibody) at dilution 1/600;  
Secondary antibody: HRP-conjugated Goat anti rabbit IgG at 1/5000 dilution;  
Exposure time: 5 seconds