

SLC2A5 RABBIT PAB

Cat.#: S219824

Product Name: Anti-SLC2A5 Rabbit Polyclonal Antibody

Synonyms: GLUT5, GLUT-5

UNIPROT ID: P22732 (Gene Accession - NP_003030)

Background: GLUT5 is a fructose transporter expressed on the apical border of enterocytes in the small intestine. GLUT5 allows for fructose to be transported from the intestinal lumen into the enterocyte by facilitated diffusion due to fructose's high concentration in the intestinal lumen. GLUT5 is also expressed in skeletal muscle, testis, kidney, fat tissue, and brain. Fructose malabsorption or Dietary Fructose Intolerance is a dietary disability of the small intestine, where the amount of fructose carrier in enterocytes is deficient. In humans the GLUT5 protein is encoded by the SLC2A5 gene.

Immunogen: Synthetic peptide of human SLC2A5

Applications: ELISA, IHC

Recommended Dilutions: IHC: Oct-50; ELISA: 1000-2000

Host Species: Rabbit

Clonality: Rabbit Polyclonal

Isotype: Immunogen-specific rabbit IgG

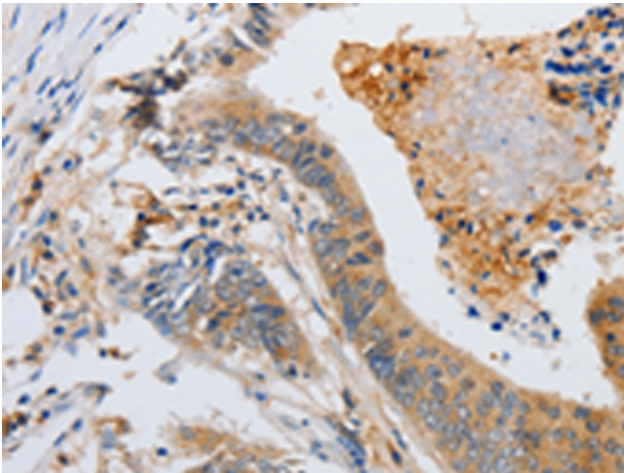
Purification: Antigen affinity purification

Species Reactivity: Human

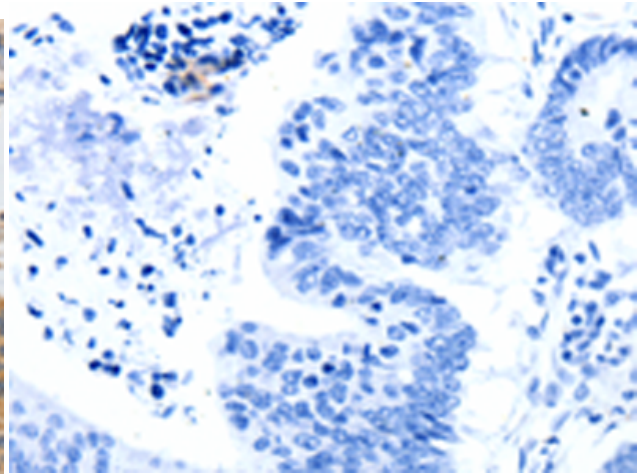
Constituents: PBS (without Mg²⁺ and Ca²⁺), pH 7.4, 150 mM NaCl, 0.05% Sodium Azide and 40% glycerol

Research Areas: Metabolism, Cancer

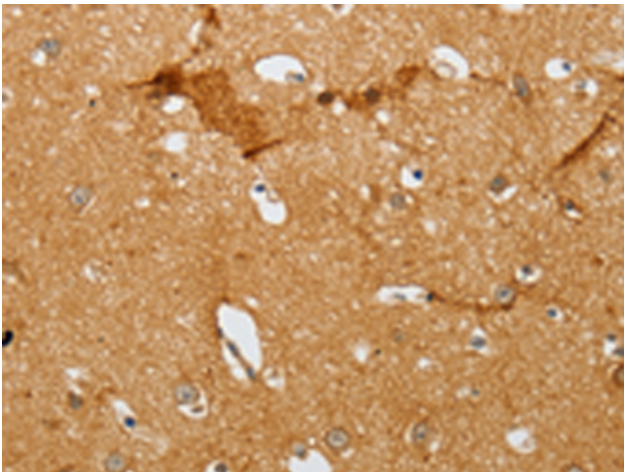
Storage & Shipping: Store at -20°C. Avoid repeated freezing and thawing



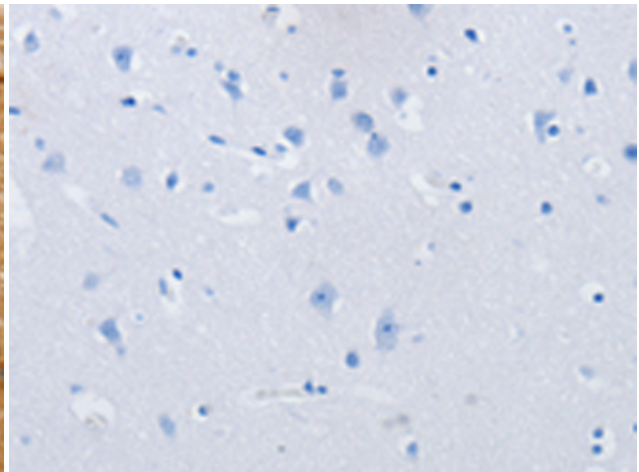
Immunohistochemistry analysis of paraffin embedded Human colon cancer tissue using 219824(SLC2A5 Antibody) at a dilution of 1/12(Cytoplasm).



In comparison with the IHC on the left, the same paraffin-embedded Human colon cancer tissue is first treated with the synthetic peptide and then with 219824(Anti-SLC2A5 Antibody) at dilution 1/12.



The image on the left is immunohistochemistry of paraffin-embedded Human brain tissue using 219824(Anti-SLC2A5 Antibody) at a dilution of 1/12.



In comparison with the IHC on the left, the same paraffin-embedded Human brain tissue is first treated with synthetic peptide and then with D260437(Anti-SLC2A5 Antibody) at dilution 1/12.