

SLC30A6 RABBIT PAB

Cat.#: S219267

Product Name: Anti-SLC30A6 Rabbit Polyclonal Antibody

Synonyms: ZNT6; MST103; MSTP103

UNIPROT ID: Q6NXT4 (Gene Accession - BC032525)

Background: This gene encodes a member of a family of proteins that function as zinc transporters. This protein can regulate subcellular levels of zinc in the Golgi and vesicles. Expression of this gene is altered in the Alzheimer's disease brain plaques.

Immunogen: Fusion protein of human SLC30A6

Applications: ELISA, IHC

Recommended Dilutions: IHC: 50-200; ELISA: 5000-10000

Host Species: Rabbit

Clonality: Rabbit Polyclonal

Isotype: Immunogen-specific rabbit IgG

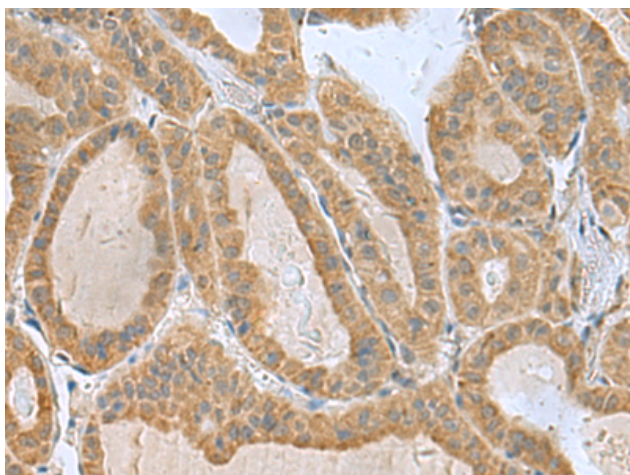
Purification: Antigen affinity purification

Species Reactivity: Human, Mouse

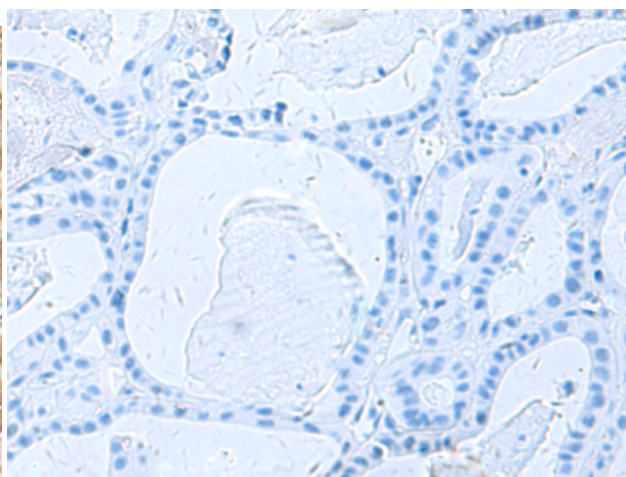
Constituents: PBS (without Mg²⁺ and Ca²⁺), pH 7.4, 150 mM NaCl, 0.05% Sodium Azide and 40% glycerol

Research Areas: Metabolism

Storage & Shipping: Store at -20°C. Avoid repeated freezing and thawing



Immunohistochemistry analysis of paraffin embedded Human thyroid cancer tissue using 219267(SLC30A6 Antibody) at a dilution of 1/75(Cytoplasm).



In comparison with the IHC on the left, the same paraffin-embedded Human thyroid cancer tissue is first treated with the fusion protein and then with 219267(Anti-SLC30A6 Antibody) at dilution 1/75.