

## SLC32A1 RABBIT PAB

**Cat.#:** S220927

**Product Name:** Anti-SLC32A1 Rabbit Polyclonal Antibody

**Synonyms:** VGAT; VIAAT

**UNIPROT ID:** Q9H598 (Gene Accession - NP\_542119 )

**Background:** The protein encoded by this gene is an integral membrane protein involved in gamma-aminobutyric acid (GABA) and glycine uptake into synaptic vesicles. The encoded protein is a member of amino acid/polyamine transporter family II.

**Immunogen:** Synthetic peptide of human SLC32A1

**Applications:** ELISA, IHC

**Recommended Dilutions:** IHC: 25-100; ELISA: 1000-2000

**Host Species:** Rabbit

**Clonality:** Rabbit Polyclonal

**Isotype:** Immunogen-specific rabbit IgG

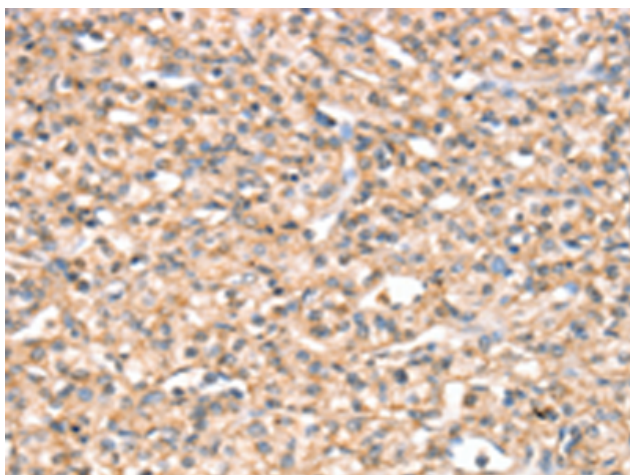
**Purification:** Antigen affinity purification

**Species Reactivity:** Human, Mouse, Rat

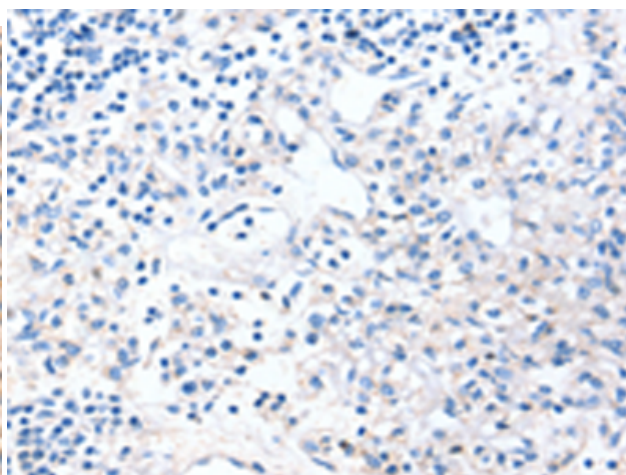
**Constituents:** PBS (without Mg<sup>2+</sup> and Ca<sup>2+</sup>), pH 7.4, 150 mM NaCl, 0.05% Sodium Azide and 40% glycerol

**Research Areas:** Neuroscience

**Storage & Shipping:** Store at -20°C. Avoid repeated freezing and thawing



Immunohistochemistry analysis of paraffin embedded Human prostate cancer tissue using 220927(SLC32A1 Antibody) at a dilution of 1/20(Cytoplasm or Cell membrane).



In comparison with the IHC on the left, the same paraffin-embedded Human prostate cancer tissue is first treated with the synthetic peptide and then with 220927(Anti-SLC32A1 Antibody) at dilution 1/20.