

## SLC39A3 RABBIT PAB

**Cat.#:** S220929

**Product Name:** Anti-SLC39A3 Rabbit Polyclonal Antibody

**Synonyms:** ZIP3; ZIP-3

**UNIPROT ID:** Q9BRY0 (Gene Accession - NP\_653165 )

**Background:** SLC39A3 (solute carrier family 39, member 2), is a 314 amino acid acid multi-pass membrane protein that localizes to the cell membrane and belongs to the ZIP family of zinc transporters. Two isoforms of ZIP3 exist as a result of alternative splicing events. ZIP3 is involved in translocation of extracellular zinc into a variety of cell types. Tumorigenic prostate epithelial cells contain less intracellular zinc than non-tumorigenic prostate epithelial cells. Loss of the ability to maintain zinc accumulation may be caused by the decrease in the ZIP1 protein expression and the intracellular redistribution of ZIP3.

**Immunogen:** Synthetic peptide of human SLC39A3

**Applications:** ELISA, IHC

**Recommended Dilutions:** IHC: 25-100; ELISA: 1000-2000

**Host Species:** Rabbit

**Clonality:** Rabbit Polyclonal

**Isotype:** Immunogen-specific rabbit IgG

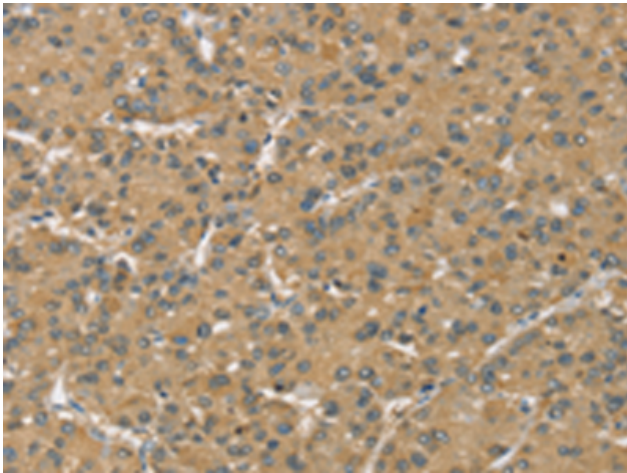
**Purification:** Antigen affinity purification

**Species Reactivity:** Human, Mouse, Rat

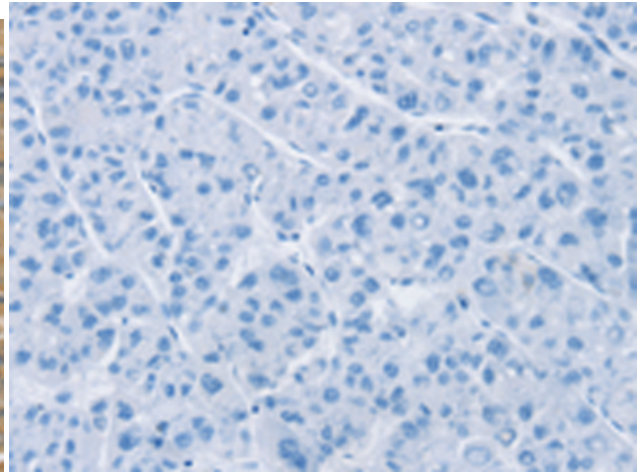
**Constituents:** PBS (without Mg<sup>2+</sup> and Ca<sup>2+</sup>), pH 7.4, 150 mM NaCl, 0.05% Sodium Azide and 40% glycerol

**Research Areas:** Metabolism

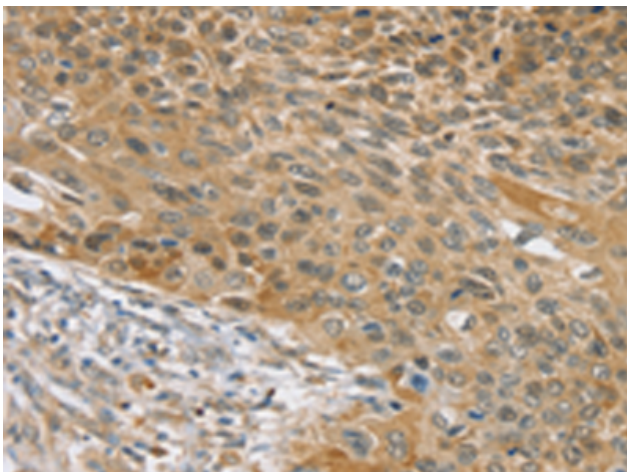
**Storage & Shipping:** Store at -20°C. Avoid repeated freezing and thawing



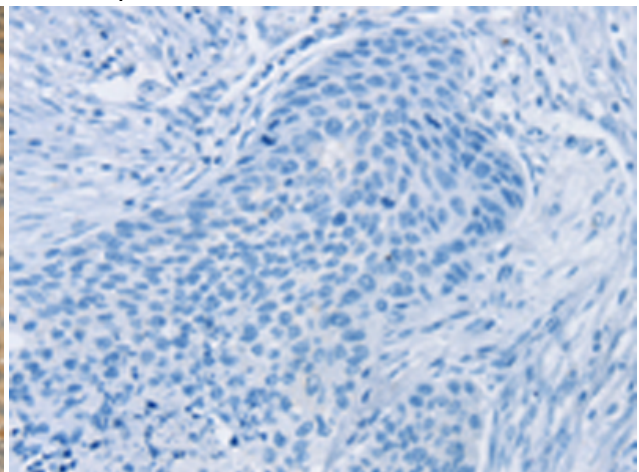
Immunohistochemistry analysis of paraffin-embedded Human liver cancer tissue using 220929(SLC39A3 Antibody) at a dilution of 1/30(Cytoplasm).



In comparison with the IHC on the left, the same paraffin-embedded Human liver cancer tissue is first treated with the synthetic peptide and then with 220929(Anti-SLC39A3 Antibody) at dilution 1/30.



The image on the left is immunohistochemistry of paraffin-embedded Human esophagus cancer tissue using 220929(Anti-SLC39A3 Antibody) at a dilution of 1/30.



In comparison with the IHC on the left, the same paraffin-embedded Human esophagus cancer tissue is first treated with synthetic peptide and then with D262236(Anti-SLC39A3 Antibody) at dilution 1/30.