

## SLC39A5 RABBIT PAB

**Cat.#:** S214700

**Product Name:** Anti-SLC39A5 Rabbit Polyclonal Antibody

**Synonyms:** ZIP5; MYP24; LZT-Hs7

**UNIPROT ID:** Q6ZMH5 (Gene Accession - NP\_001128667 )

**Background:** The protein encoded by this gene belongs to the ZIP family of zinc transporters that transport zinc into cells from outside, and play a crucial role in controlling intracellular zinc levels. Zinc is an essential cofactor for many enzymes and proteins involved in gene transcription, growth, development and differentiation. Mutations in this gene have been associated with autosomal dominant high myopia (MYP24). Alternatively spliced transcript variants have been found for this gene.

**Immunogen:** Synthetic peptide of human SLC39A5

**Applications:** ELISA, WB, IHC

**Recommended Dilutions:** IHC: 25-50;WB: 500-2000;ELISA: 5000-10000

**Host Species:** Rabbit

**Clonality:** Rabbit Polyclonal

**Isotype:** Immunogen-specific rabbit IgG

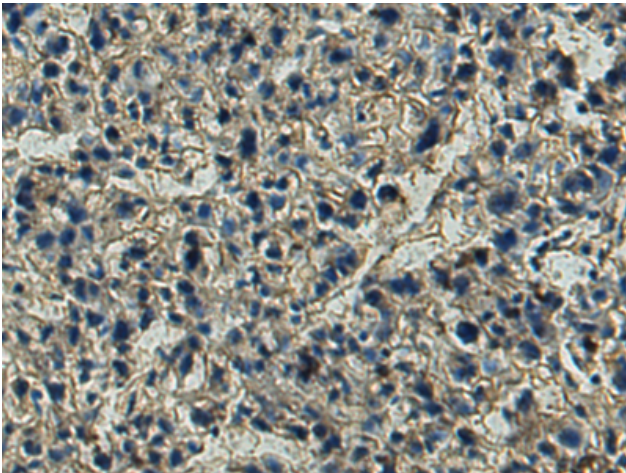
**Purification:** Antigen affinity purification

**Species Reactivity:** Human

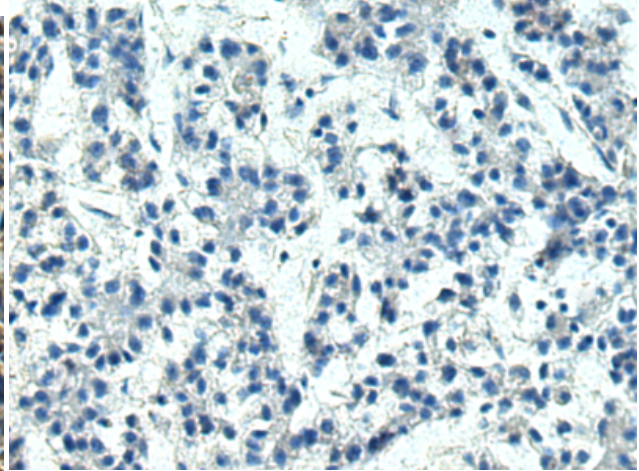
**Constituents:** PBS (without Mg<sup>2+</sup> and Ca<sup>2+</sup>), pH 7.4, 150 mM NaCl, 0.05% Sodium Azide and 40% glycerol

**Research Areas:** Metabolism

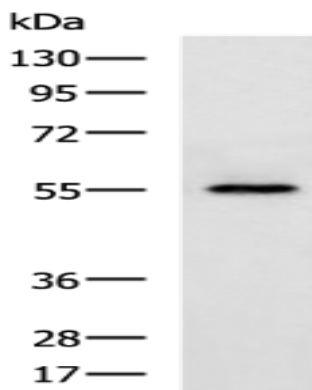
**Storage & Shipping:** Store at -20°C. Avoid repeated freezing and thawing



Immunohistochemistry analysis of paraffin embedded Human liver cancer tissue using 214700(SLC39A5 Antibody) at a dilution of 1/25(Cell membrane).



In comparison with the IHC on the left, the same paraffin-embedded Human liver cancer tissue is first treated with the synthetic peptide and then with 214700(Anti-SLC39A5 Antibody) at dilution 1/25.



Gel: 8%SDS-PAGE, Lysate: 40  $\mu$ g;  
Lane: Human placenta tissue lysate;  
Primary antibody: 214700(SLC39A5 Antibody)  
at dilution 1/600;  
Secondary antibody: HRP-conjugated Goat  
anti rabbit IgG at 1/5000 dilution;  
Exposure time: 2 minutes