

## SLC40A1 RABBIT PAB

**Cat.#:** S222031

**Product Name:** Anti-SLC40A1 Rabbit Polyclonal Antibody

**Synonyms:** FPN1; HFE4; MTP1; IREG1; MST079; MSTP079; SLC11A3

**UNIPROT ID:** Q9NP59 (Gene Accession - NP\_055400 )

**Background:** The protein encoded by this gene is a cell membrane protein that may be involved in iron export from duodenal epithelial cells. Defects in this gene are a cause of hemochromatosis type 4 (HFE4).

**Immunogen:** Synthetic peptide of human SLC40A1

**Applications:** ELISA, IHC

**Recommended Dilutions:** IHC: 50-300; ELISA: 5000-10000

**Host Species:** Rabbit

**Clonality:** Rabbit Polyclonal

**Isotype:** Immunogen-specific rabbit IgG

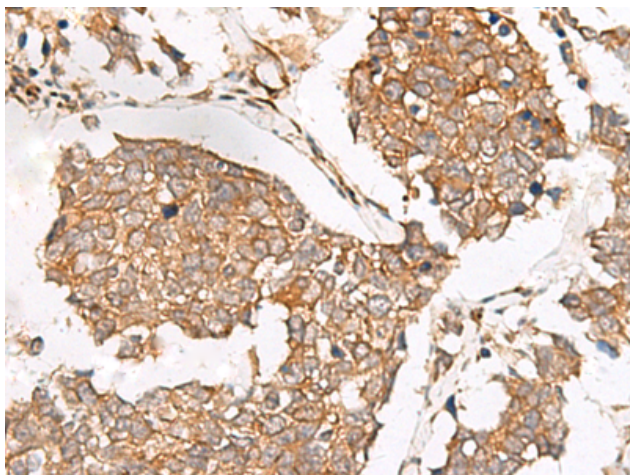
**Purification:** Antigen affinity purification

**Species Reactivity:** Human

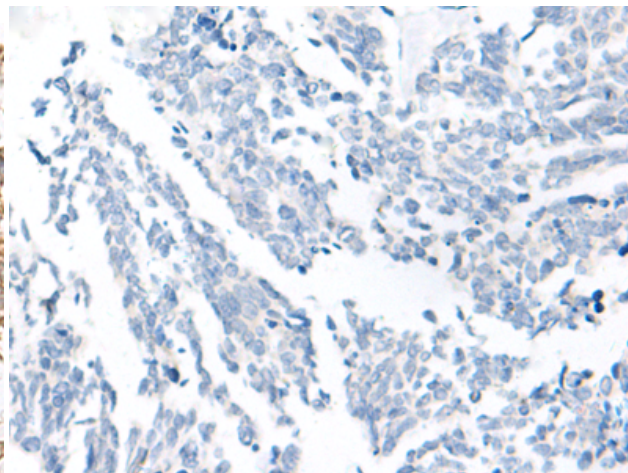
**Constituents:** PBS (without Mg<sup>2+</sup> and Ca<sup>2+</sup>), pH 7.4, 150 mM NaCl, 0.05% Sodium Azide and 40% glycerol

**Research Areas:** Metabolism

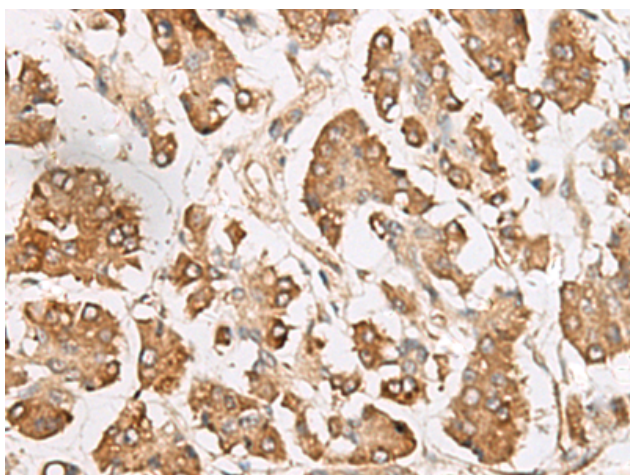
**Storage & Shipping:** Store at -20°C. Avoid repeated freezing and thawing



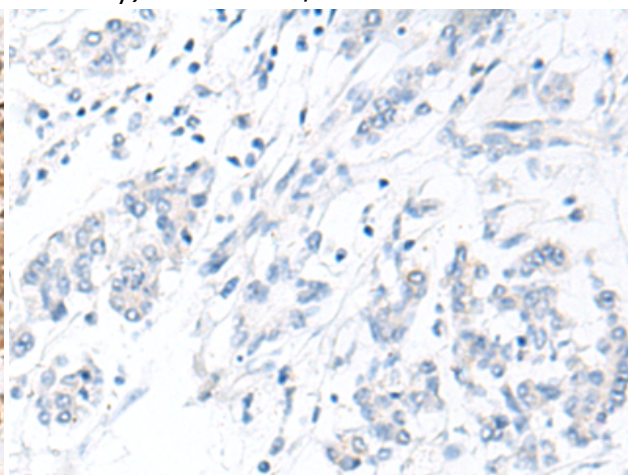
Immunohistochemistry analysis of paraffin embedded Human lung cancer tissue using 222031(SLC40A1 Antibody) at a dilution of 1/65(Cell membrane).



In comparison with the IHC on the left, the same paraffin-embedded Human lung cancer tissue is first treated with the synthetic peptide and then with 222031(Anti-SLC40A1 Antibody) at dilution 1/65.



The image on the left is immunohistochemistry of paraffin-embedded Human gastric cancer tissue using 222031(Anti-SLC40A1 Antibody) at a dilution of 1/65.



In comparison with the IHC on the left, the same paraffin-embedded Human gastric cancer tissue is first treated with synthetic peptide and then with D263909(Anti-SLC40A1 Antibody) at dilution 1/65.