

## SLC41A2 RABBIT PAB

**Cat.#:** S219992

**Product Name:** Anti-SLC41A2 Rabbit Polyclonal Antibody

**Synonyms:** SLC41A1-L1

**UNIPROT ID:** Q96JW4 (Gene Accession - NP\_115524 )

**Background:** This gene belongs to the SLC41A transporter family. It acts as a plasma-membrane magnesium transporter. SLC41A2 functions as a plasma-membrane Mg<sup>2+</sup> transporter in vertebrate cells.

**Immunogen:** Synthetic peptide of human SLC41A2

**Applications:** ELISA, IHC

**Recommended Dilutions:** IHC: 25-100; ELISA: 1000-5000

**Host Species:** Rabbit

**Clonality:** Rabbit Polyclonal

**Isotype:** Immunogen-specific rabbit IgG

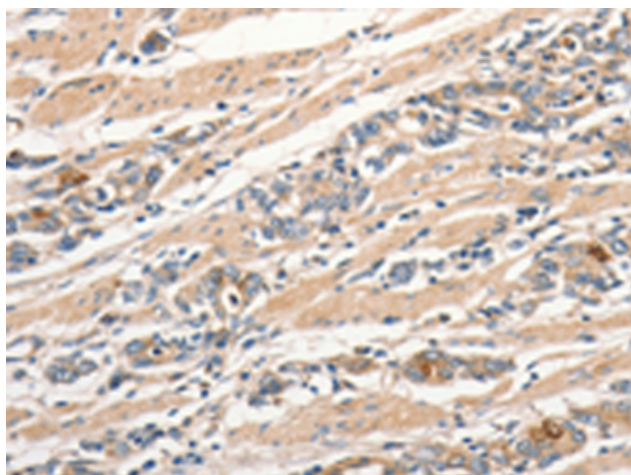
**Purification:** Antigen affinity purification

**Species Reactivity:** Human

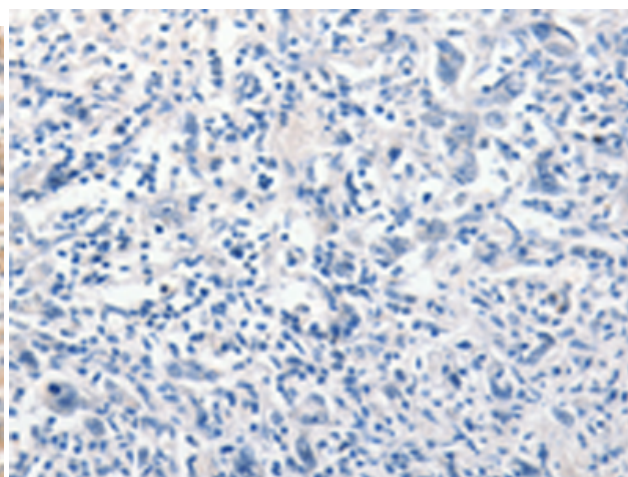
**Constituents:** PBS (without Mg<sup>2+</sup> and Ca<sup>2+</sup>), pH 7.4, 150 mM NaCl, 0.05% Sodium Azide and 40% glycerol

**Research Areas:** Signal Transduction

**Storage & Shipping:** Store at -20°C. Avoid repeated freezing and thawing



Immunohistochemistry analysis of paraffin embedded Human gastric cancer tissue using 219992 (SLC41A2 Antibody) at a dilution of 1/30 (Cytoplasm).



In comparison with the IHC on the left, the same paraffin-embedded Human gastric cancer tissue is first treated with the synthetic peptide and then with 219992 (Anti-SLC41A2 Antibody) at dilution 1/30.