

## SLC44A1 RABBIT PAB

**Cat.#:** S214704

**Product Name:** Anti-SLC44A1 Rabbit Polyclonal Antibody

**Synonyms:** CD92; CTL1; CDW92; CHTL1

**UNIPROT ID:** Q8WWI5 (Gene Accession - NP\_536856 )

**Background:** CD92, also known as SLC44A1 (solute carrier family 44, member 1), CDW92 or CTL1 (choline transporter-like protein 1), is a 657 amino acid multi-pass membrane protein that belongs to the choline transporter-like family of solute carrier proteins. Expressed in cells that are associated with the hematopoietic system, CD92 functions as a choline transporter that may be involved in myelin production, as well as in membrane synthesis. Human CD92 shares 96% sequence homology with its mouse counterpart, suggesting a conserved role between species. Three isoforms of CD92 exist due to alternative splicing events.

**Immunogen:** Synthetic peptide of human SLC44A1

**Applications:** ELISA, IHC

**Recommended Dilutions:** IHC: 25-100; ELISA: 1000-2000

**Host Species:** Rabbit

**Clonality:** Rabbit Polyclonal

**Isotype:** Immunogen-specific rabbit IgG

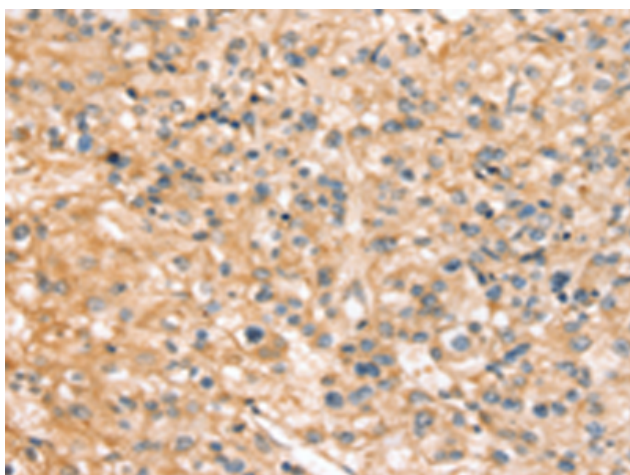
**Purification:** Antigen affinity purification

**Species Reactivity:** Human, Mouse, Rat

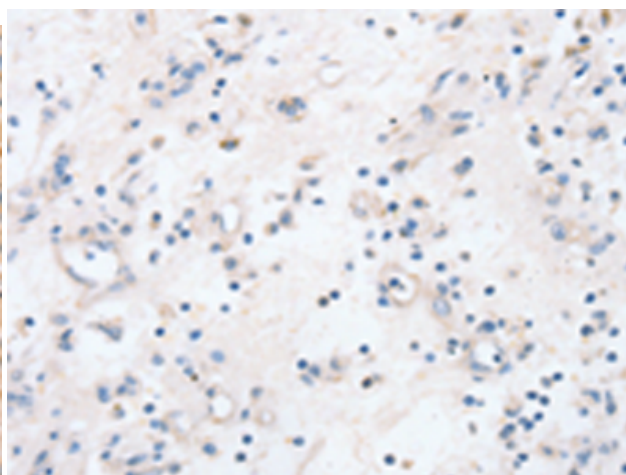
**Constituents:** PBS (without Mg<sup>2+</sup> and Ca<sup>2+</sup>), pH 7.4, 150 mM NaCl, 0.05% Sodium Azide and 40% glycerol

**Research Areas:** Metabolism

**Storage & Shipping:** Store at -20°C. Avoid repeated freezing and thawing



Immunohistochemistry analysis of paraffin embedded Human prostate cancer tissue using 214704(SLC44A1 Antibody) at a dilution of 1/20(Cytoplasm or Cell membrane).



In comparison with the IHC on the left, the same paraffin-embedded Human prostate cancer tissue is first treated with the synthetic peptide and then with 214704(Anti-SLC44A1 Antibody) at dilution 1/20.