

SLC44A1 RABBIT PAB

Cat.#: S213738

Product Name: Anti-SLC44A1 Rabbit Polyclonal Antibody

Synonyms: CD92, CTL1, CDW92, CHTL1, RP11-287A8.1

UNIPROT ID: Q8WWI5 (Gene Accession - NP_536856)

Background: This gene is Choline transporter. It belongs to the CTL (choline transporter-like) family. May be involved in membrane synthesis and myelin production. It is taken up with high affinity at cholinergic nerve terminals in a sodium-dependent manner. Cloned CTL1, a suppressor for a yeast choline transport mutation, from a Torpedo electric lobe yeast expression library by functional complementation.

Immunogen: Synthetic peptide of human SLC44A1

Applications: ELISA, IHC

Recommended Dilutions: IHC: 25-100; ELISA: 1000-5000

Host Species: Rabbit

Clonality: Rabbit Polyclonal

Isotype: Immunogen-specific rabbit IgG

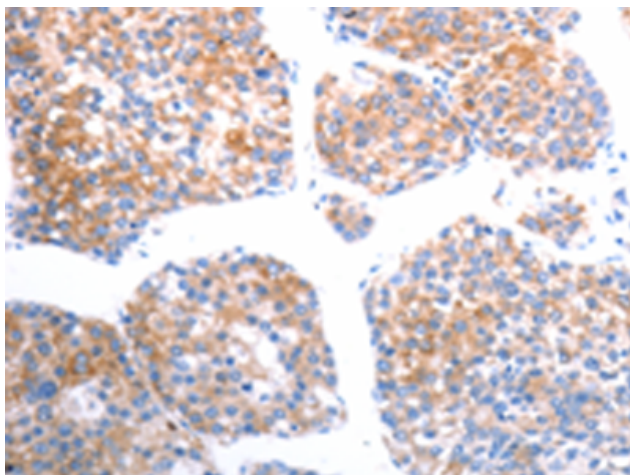
Purification: Antigen affinity purification

Species Reactivity: Human, Mouse, Rat

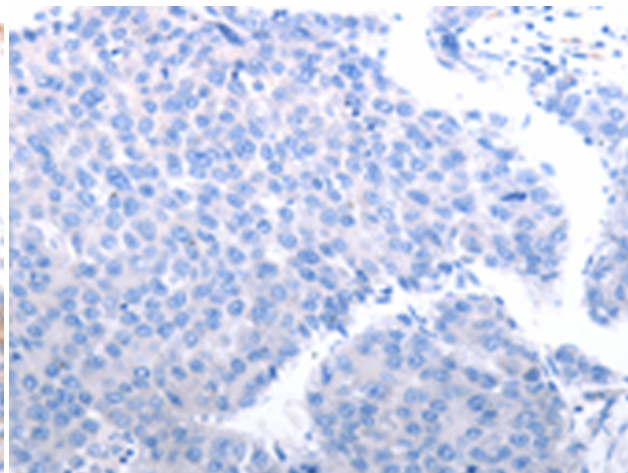
Constituents: PBS (without Mg²⁺ and Ca²⁺), pH 7.4, 150 mM NaCl, 0.05% Sodium Azide and 40% glycerol

Research Areas: Metabolism

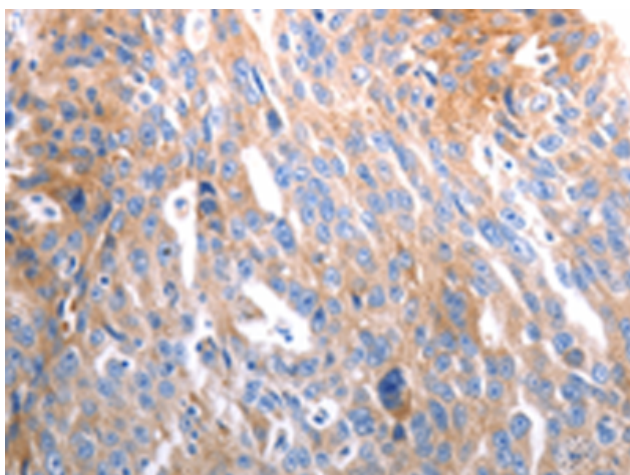
Storage & Shipping: Store at -20°C. Avoid repeated freezing and thawing



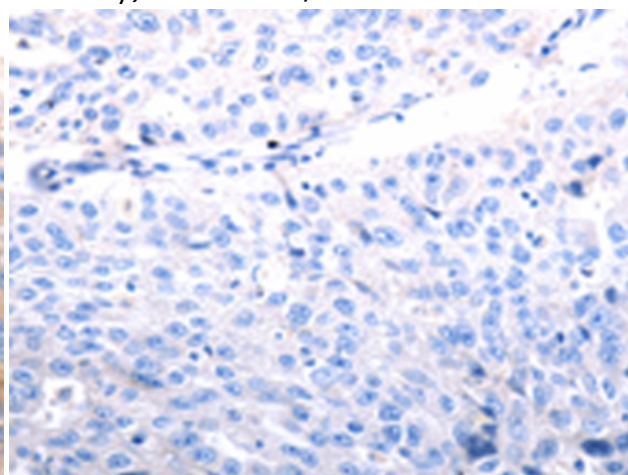
Immunohistochemistry analysis of paraffin-embedded Human liver cancer tissue using 213738 (SLC44A1 Antibody) at a dilution of 1/25 (Cytoplasm).



In comparison with the IHC on the left, the same paraffin-embedded Human liver cancer tissue is first treated with the synthetic peptide and then with 213738 (Anti-SLC44A1 Antibody) at dilution 1/25.



The image on the left is immunohistochemistry of paraffin-embedded Human ovarian cancer tissue using 213738 (Anti-SLC44A1 Antibody) at a dilution of 1/25.



In comparison with the IHC on the left, the same paraffin-embedded Human ovarian cancer tissue is first treated with synthetic peptide and then with D160742 (Anti-SLC44A1 Antibody) at dilution 1/25.