

SLC47A1 RABBIT PAB

Cat.#: S216147

Product Name: Anti-SLC47A1 Rabbit Polyclonal Antibody

Synonyms: MATE1

UNIPROT ID: Q96FL8 (Gene Accession - NP_060712)

Background: Solute transporter for tetraethylammonium (TEA), 1-methyl-4-phenylpyridinium (MPP), cimetidine, N-methylnicotinamide (NMN), metformin, creatinine, guanidine, procainamide, topotecan, estrone sulfate, acyclovir, ganciclovir and also the zwitterionic cephalosporin, cephalixin and cephradin. Seems to also play a role in the uptake of oxaliplatin (a new platinum anticancer agent). Able to transport paraquat (PQ or N,N-dimethyl-4-4'-bipyridinium); a widely used herbicide. Responsible for the secretion of cationic drugs across the brush border membranes. This gene is located within the Smith-Magenis syndrome region on chromosome 17.

Immunogen: Synthetic peptide of human SLC47A1

Applications: ELISA, WB, IHC

Recommended Dilutions: IHC: 25-50;WB: 500-2000;ELISA: 5000-10000

Host Species: Rabbit

Clonality: Rabbit Polyclonal

Isotype: Immunogen-specific rabbit IgG

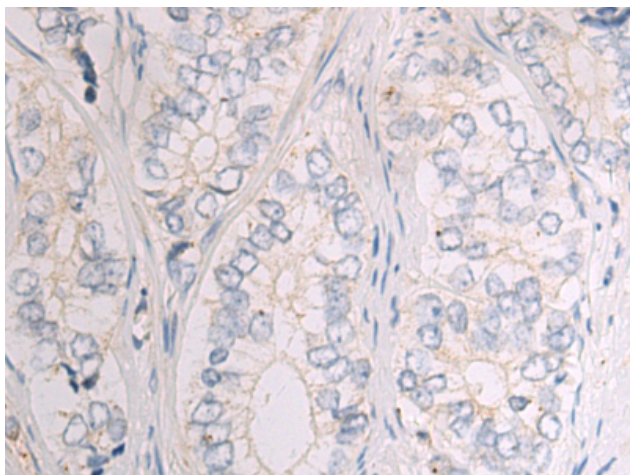
Purification: Antigen affinity purification

Species Reactivity: Human

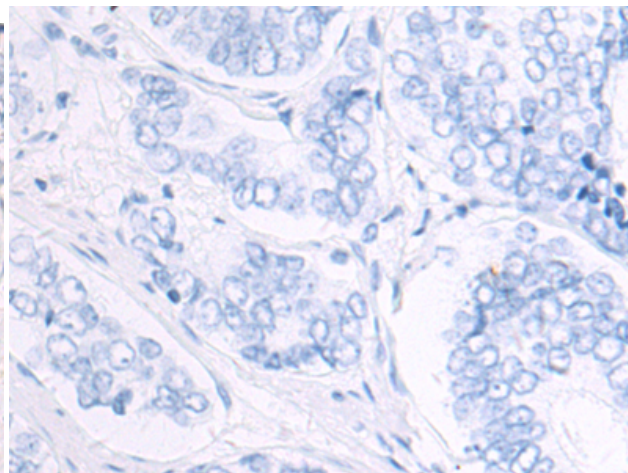
Constituents: PBS (without Mg²⁺ and Ca²⁺), pH 7.4, 150 mM NaCl, 0.05% Sodium Azide and 40% glycerol

Research Areas: Signal Transduction, Metabolism

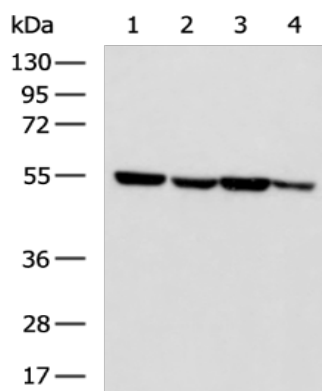
Storage & Shipping: Store at -20°C. Avoid repeated freezing and thawing



Immunohistochemistry analysis of paraffin embedded Human prostate cancer tissue using 216147 (SLC47A1 Antibody) at a dilution of 1/50 (Cell membrane).



In comparison with the IHC on the left, the same paraffin-embedded Human prostate cancer tissue is first treated with the synthetic peptide and then with 216147 (Anti-SLC47A1 Antibody) at dilution 1/50.



Gel: 8%SDS-PAGE, Lysate: 40 μ g;
 Lane 1-4: 293T, HeLa, HepG2, A549 cell lysates;
 Primary antibody: 216147 (SLC47A1 Antibody) at dilution 1/400;
 Secondary antibody: HRP-conjugated Goat anti rabbit IgG at 1/5000 dilution;
 Exposure time: 10 seconds