

## SLC4A3 RABBIT PAB

**Cat.#:** S221309

**Product Name:** Anti-SLC4A3 Rabbit Polyclonal Antibody

**Synonyms:** AE3; SLC2C; CAE3/BAE3

**UNIPROT ID:** P48751 (Gene Accession - NP\_005061)

**Background:** The protein encoded by this gene is a plasma membrane anion exchange protein. The encoded protein has been found in brain, heart, kidney, small intestine, and lung.

**Immunogen:** Synthetic peptide of human SLC4A3

**Applications:** ELISA, WB, IHC

**Recommended Dilutions:** IHC: 25-50;WB: 1000-5000;ELISA: 5000-10000

**Host Species:** Rabbit

**Clonality:** Rabbit Polyclonal

**Isotype:** Immunogen-specific rabbit IgG

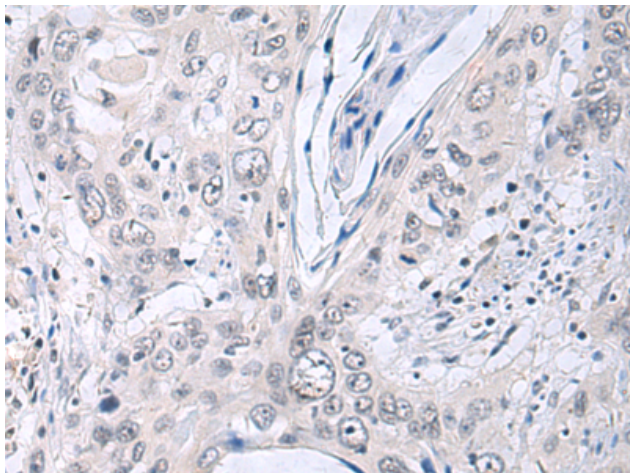
**Purification:** Antigen affinity purification

**Species Reactivity:** Human, Mouse, Rat

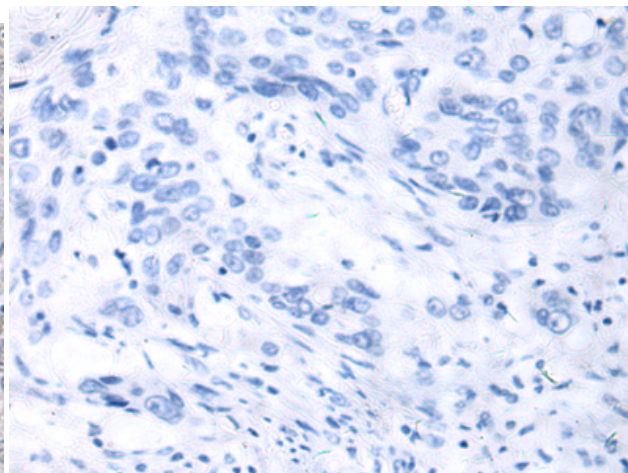
**Constituents:** PBS (without Mg<sup>2+</sup> and Ca<sup>2+</sup>), pH 7.4, 150 mM NaCl, 0.05% Sodium Azide and 40% glycerol

**Research Areas:** Metabolism, Neuroscience

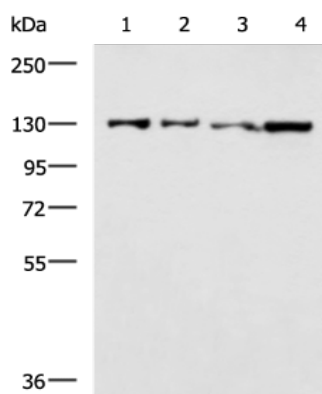
**Storage & Shipping:** Store at -20°C. Avoid repeated freezing and thawing



Immunohistochemistry analysis of paraffin embedded Human esophagus cancer tissue using 221309(SLC4A3 Antibody) at a dilution of 1/50(Cell membrane).



In comparison with the IHC on the left, the same paraffin-embedded Human esophagus cancer tissue is first treated with the synthetic peptide and then with 221309(Anti-SLC4A3 Antibody) at dilution 1/50.



Gel: 6%SDS-PAGE, Lysate: 40  $\mu$ g;  
 Lane 1-4: PC3, 231, A172 and A375 cell lysates;  
 Primary antibody: 221309(SLC4A3 Antibody) at dilution 1/1150;  
 Secondary antibody: HRP-conjugated Goat anti rabbit IgG at 1/5000 dilution;  
 Exposure time: 1 minute