

SLC4A7 RABBIT PAB

Cat.#: S220934

Product Name: Anti-SLC4A7 Rabbit Polyclonal Antibody

Synonyms: NBC2; NBC3; SBC2; NBCN1; SLC4A6

UNIPROT ID: Q9Y6M7 (Gene Accession - NP_003606)

Background: This locus encodes a sodium bicarbonate cotransporter. The encoded transmembrane protein appears to transport sodium and bicarbonate ions in a 1:1 ratio, and is thus considered an electroneutral cotransporter. The encoded protein likely plays a critical role in regulation of intracellular pH involved in visual and auditory sensory transmission. Alternatively spliced transcript variants encoding distinct isoforms have been described.

Immunogen: Synthetic peptide of human SLC4A7

Applications: ELISA, IHC

Recommended Dilutions: IHC: 30-150; ELISA: 2000-5000

Host Species: Rabbit

Clonality: Rabbit Polyclonal

Isotype: Immunogen-specific rabbit IgG

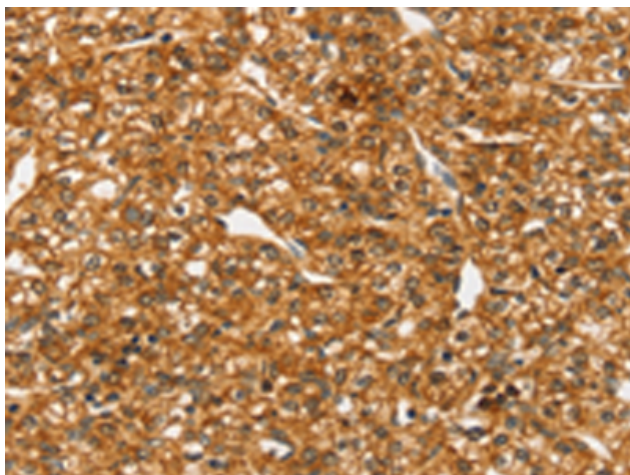
Purification: Antigen affinity purification

Species Reactivity: Human, Mouse, Rat

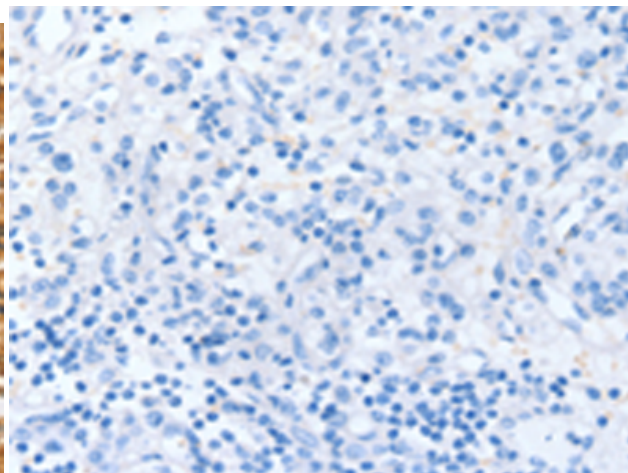
Constituents: PBS (without Mg²⁺ and Ca²⁺), pH 7.4, 150 mM NaCl, 0.05% Sodium Azide and 40% glycerol

Research Areas: Metabolism

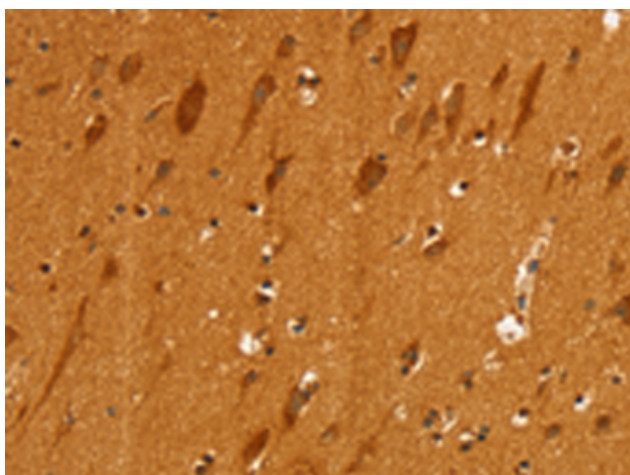
Storage & Shipping: Store at -20°C. Avoid repeated freezing and thawing



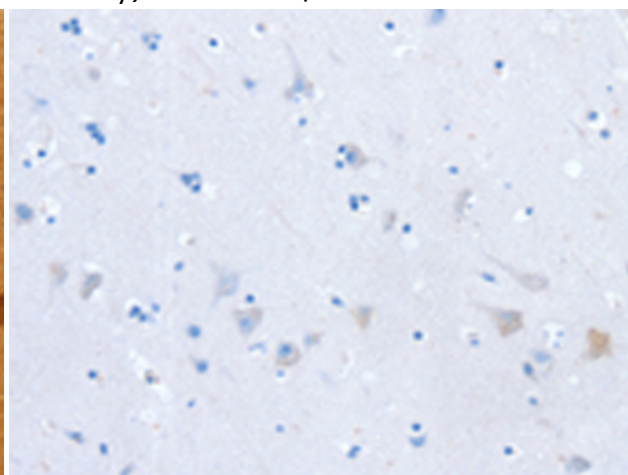
Immunohistochemistry analysis of paraffin embedded Human prostate cancer tissue using 220934 (SLC4A7 Antibody) at a dilution of 1/25 (Cytoplasm or Cell membrane).



In comparison with the IHC on the left, the same paraffin-embedded Human prostate cancer tissue is first treated with the synthetic peptide and then with 220934 (Anti-SLC4A7 Antibody) at dilution 1/25.



The image on the left is immunohistochemistry of paraffin-embedded Human brain tissue using 220934 (Anti-SLC4A7 Antibody) at a dilution of 1/25.



In comparison with the IHC on the left, the same paraffin-embedded Human brain tissue is first treated with synthetic peptide and then with D262246 (Anti-SLC4A7 Antibody) at dilution 1/25.