

SLC5A11 RABBIT PAB

Cat.#: S220935

Product Name: Anti-SLC5A11 Rabbit Polyclonal Antibody

Synonyms: KST1; RKST1; SGLT6; SMIT2

UNIPROT ID: Q8WWX8 (Gene Accession - NP_443176)

Background: Cotransporters, such as SLC5A11, represent a major class of proteins that make use of ion gradients to drive active transport for the cellular accumulation of nutrients, neurotransmitters, osmolytes, and ions Roll et al.

Immunogen: Synthetic peptide of human SLC5A11

Applications: ELISA, IHC

Recommended Dilutions: IHC: 30-150; ELISA: 2000-5000

Host Species: Rabbit

Clonality: Rabbit Polyclonal

Isotype: Immunogen-specific rabbit IgG

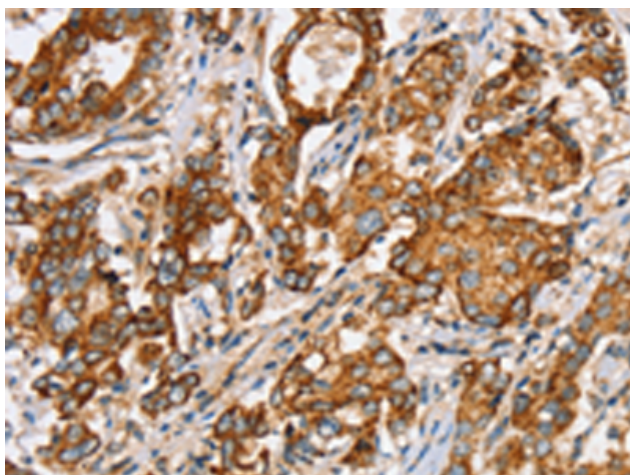
Purification: Antigen affinity purification

Species Reactivity: Human, Mouse, Rat

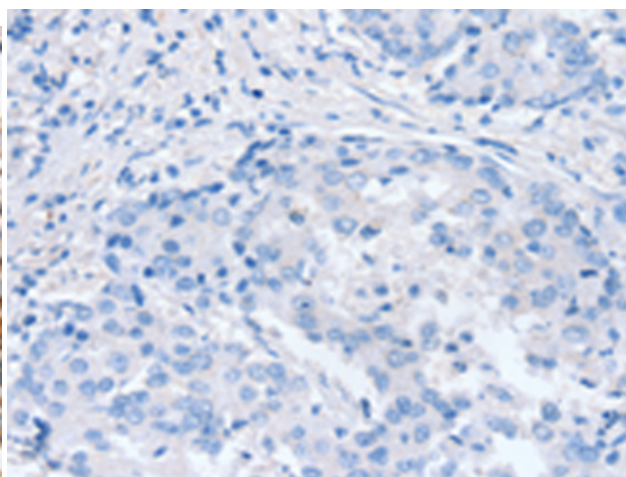
Constituents: PBS (without Mg²⁺ and Ca²⁺), pH 7.4, 150 mM NaCl, 0.05% Sodium Azide and 40% glycerol

Research Areas: Metabolism

Storage & Shipping: Store at -20°C. Avoid repeated freezing and thawing



Immunohistochemistry analysis of paraffin embedded Human liver cancer tissue using 220935(SLC5A11 Antibody) at a dilution of 1/35(Cytoplasm or Cell membrane).



In comparison with the IHC on the left, the same paraffin-embedded Human liver cancer tissue is first treated with the synthetic peptide and then with 220935(Anti-SLC5A11 Antibody) at dilution 1/35.