

## SLC5A3 RABBIT PAB

**Cat.#:** S220936

**Product Name:** Anti-SLC5A3 Rabbit Polyclonal Antibody

**Synonyms:** BCW2; SMIT; SMIT1; SMIT2

**UNIPROT ID:** P53794 (Gene Accession - NP\_008864 )

**Background:** Prevents intracellular accumulation of high concentrations of myo-inositol (an osmolyte) that result in impairment of cellular function.

**Immunogen:** Synthetic peptide of human SLC5A3

**Applications:** ELISA, IHC

**Recommended Dilutions:** IHC: 25-100; ELISA: 5000-10000

**Host Species:** Rabbit

**Clonality:** Rabbit Polyclonal

**Isotype:** Immunogen-specific rabbit IgG

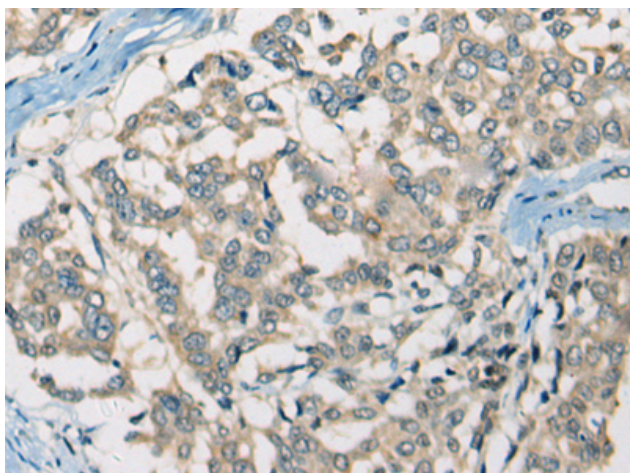
**Purification:** Antigen affinity purification

**Species Reactivity:** Human, Mouse

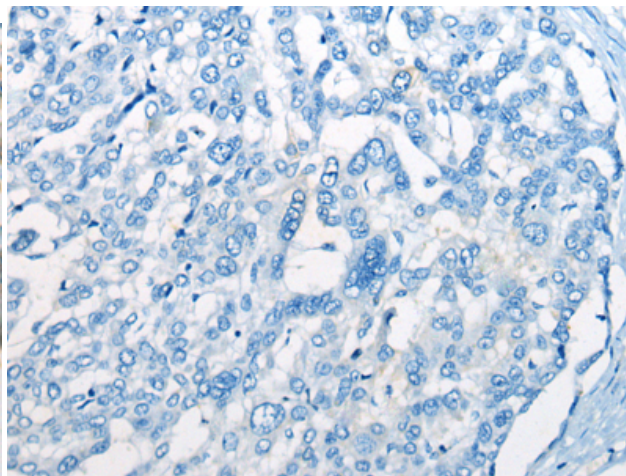
**Constituents:** PBS (without Mg<sup>2+</sup> and Ca<sup>2+</sup>), pH 7.4, 150 mM NaCl, 0.05% Sodium Azide and 40% glycerol

**Research Areas:** Metabolism, Neuroscience

**Storage & Shipping:** Store at -20°C. Avoid repeated freezing and thawing



Immunohistochemistry analysis of paraffin embedded Human liver cancer tissue using 220936(SLC5A3 Antibody) at a dilution of 1/25(Cell membrane).



In comparison with the IHC on the left, the same paraffin-embedded Human liver cancer tissue is first treated with the synthetic peptide and then with 220936(Anti-SLC5A3 Antibody) at dilution 1/25.