

SLC5A6 RABBIT PAB

Cat.#: S214710

Product Name: Anti-SLC5A6 Rabbit Polyclonal Antibody

Synonyms: SMVT

UNIPROT ID: Q9Y289 (Gene Accession - NP_066918)

Background: SLC5A6 is a 635 amino acid protein that belongs to the sodium-coupled glucose transporter family. SMVT contains 12 putative transmembrane domains with the N and C termini both facing towards the cytoplasm. Its function is to transport the essential vitamins pantothenate, biotin, and the metabolite lipoate into cells of various human tissues. Biotin, also known as vitamin B6, is important in synthesizing fatty acids gluconeogenesis, and metabolizing leucine, while pantothenate, or vitamin B5, is critical in the metabolism and synthesis of carbohydrates, proteins, and fats. Lipoate is involved in oxidative metabolism.

Immunogen: Synthetic peptide of human SLC5A6

Applications: ELISA, IHC

Recommended Dilutions: IHC: 25-100; ELISA: 1000-2000

Host Species: Rabbit

Clonality: Rabbit Polyclonal

Isotype: Immunogen-specific rabbit IgG

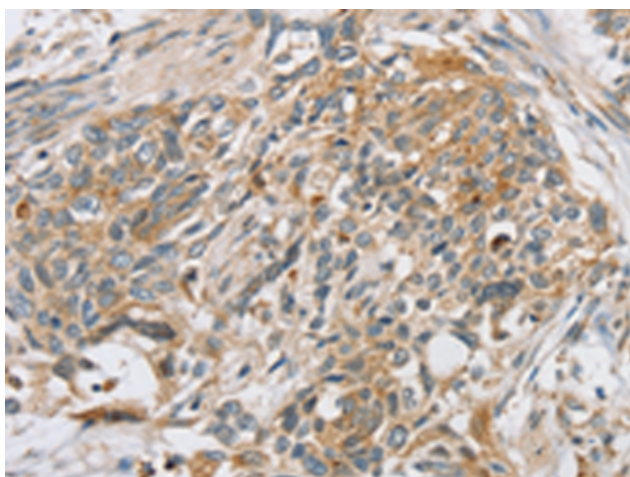
Purification: Antigen affinity purification

Species Reactivity: Human

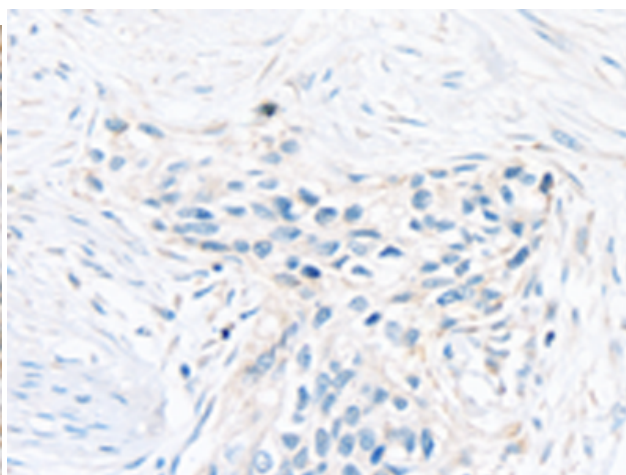
Constituents: PBS (without Mg²⁺ and Ca²⁺), pH 7.4, 150 mM NaCl, 0.05% Sodium Azide and 40% glycerol

Research Areas: Metabolism

Storage & Shipping: Store at -20°C. Avoid repeated freezing and thawing



Immunohistochemistry analysis of paraffin embedded Human esophagus cancer tissue using 214710(SLC5A6 Antibody) at a dilution of 1/20(Cytoplasm or Cell membrane).



In comparison with the IHC on the left, the same paraffin-embedded Human esophagus cancer tissue is first treated with the synthetic peptide and then with 214710(Anti-SLC5A6 Antibody) at dilution 1/20.