

SLC7A5 RABBIT PAB

Cat.#: S214715

Product Name: Anti-SLC7A5 Rabbit Polyclonal Antibody

Synonyms: E16; CD98; LAT1; 4F2LC; MPE16; D16S469E

UNIPROT ID: Q01650 (Gene Accession - NP_003477)

Background: Enables L-leucine transmembrane transporter activity; L-tryptophan transmembrane transporter activity; and thyroid hormone transmembrane transporter activity. Involved in carboxylic acid transport; thyroid hormone transport; and xenobiotic transport. Located in cytosol; intracellular membrane-bounded organelle; and plasma membrane. Is integral component of membrane. Part of amino acid transport complex; apical plasma membrane; and microvillus membrane.

Immunogen: Synthetic peptide of human SLC7A5

Applications: ELISA, WB, IHC

Recommended Dilutions: IHC: 50-200;WB: 500-2000;ELISA: 5000-10000

Host Species: Rabbit

Clonality: Rabbit Polyclonal

Isotype: Immunogen-specific rabbit IgG

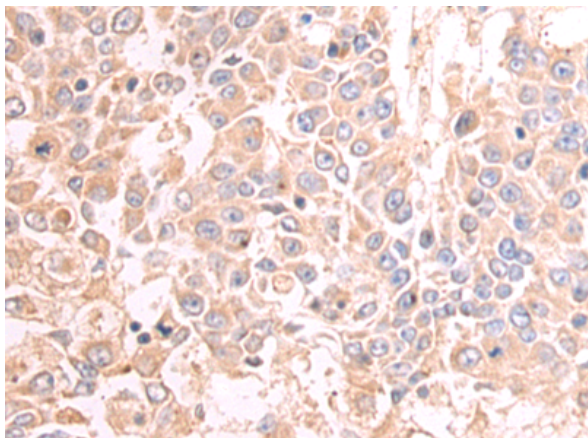
Purification: Antigen affinity purification

Species Reactivity: Human

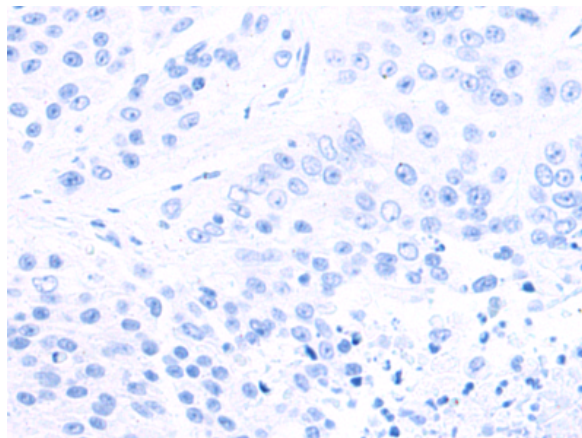
Constituents: PBS (without Mg²⁺ and Ca²⁺), pH 7.4, 150 mM NaCl, 0.05% Sodium Azide and 40% glycerol

Research Areas: Metabolism

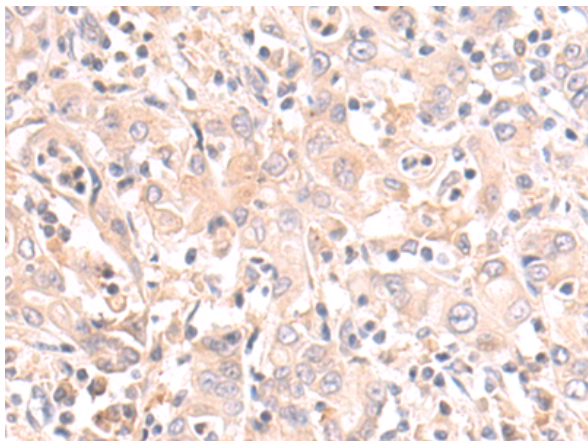
Storage & Shipping: Store at -20°C. Avoid repeated freezing and thawing



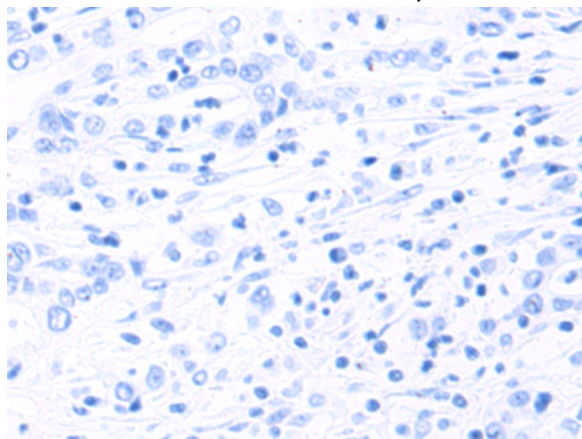
Immunohistochemistry analysis of paraffin embedded Human liver cancer tissue using 214715(SLC7A5 Antibody) at a dilution of 1/50(Cytoplasm).



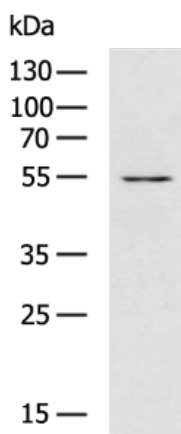
In comparison with the IHC on the left, the same paraffin-embedded Human liver cancer tissue is first treated with the synthetic peptide and then with 214715(Anti-SLC7A5 Antibody) at dilution 1/50.



The image on the left is immunohistochemistry of paraffin-embedded Human gastric cancer tissue using 214715(Anti-SLC7A5 Antibody) at a dilution of 1/50.



In comparison with the IHC on the left, the same paraffin-embedded Human gastric cancer tissue is first treated with synthetic peptide and then with D162258(Anti-SLC7A5 Antibody) at dilution 1/50.



Gel: 8%SDS-PAGE, Lysate: 40 µg;
Lane: K562 cell lysate;
Primary antibody: 214715(SLC7A5 Antibody) at dilution 1/1000;
Secondary antibody: HRP-conjugated Goat anti rabbit IgG at 1/5000 dilution;
Exposure time: 1 minute



Product Description

Pioneering GTPase and Oncogene Product Development since 2010
