

SLCO5A1 RABBIT MAB

Cat.#: N262908

Product Name: Anti-SLCO5A1 Rabbit Monoclonal Antibody

Synonyms: OATPJ; OATP-J; OATP5A1; OATPRP4; OATP-RP4; SLC21A15

UNIPROT ID: Q9H2Y9

Background: Solute carrier organic anion transporter family member 5A1

Immunogen: Recombinant protein of human SLCO5A1

Applications: WB,IHC-P

Recommended Dilutions: WB: 1/500-1/1000 IHC: 1/50-1/100

Host Species: Rabbit

Clonality: Rabbit Monoclonal

Clone ID: R02-5J4

MW: Calculated MW: 92 kDa; Observed MW: 92 kDa

Isotype: IgG

Purification: Affinity Purified

Species Reactivity: Human,Mouse

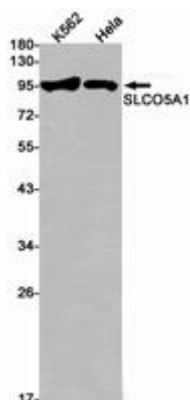
Conjugation: Unconjugated

Modification: Unmodified

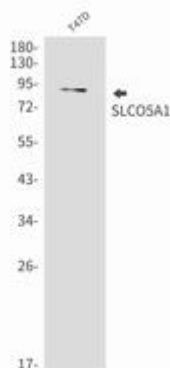
Constituents: PBS (without Mg²⁺ and Ca²⁺), pH 7.3 containing 50% glycerol, 0.5% BSA and 0.02% sodium azide

Research Areas: Signal Transduction

Storage & Shipping: Store at -20°C. Avoid repeated freezing and thawing



Western blot analysis of SLCO5A1 in K562, HeLa lysates using SLCO5A1 antibody.



Western blot analysis of SLCO5A1 in T47D lysates using SLCO5A1 antibody.



Product Description

Pioneering GTPase and Oncogene Product Development since 2010
