

SLIT1 RABBIT PAB

Cat.#: S214718

Product Name: Anti-SLIT1 Rabbit Polyclonal Antibody

Synonyms: MEGF4; SLIL1; SLIT3; SLIT-1

UNIPROT ID: O75093 (Gene Accession - NP_003052)

Background: Thought to act as molecular guidance cue in cellular migration, and function appears to be mediated by interaction with roundabout homolog receptors. During neural development involved in axonal navigation at the ventral midline of the neural tube and projection of axons to different regions (By similarity). SLIT1 and SLIT2 together seem to be essential for midline guidance in the forebrain by acting as repulsive signal preventing inappropriate midline crossing by axons projecting from the olfactory bulb.

Immunogen: Synthetic peptide of human SLIT1

Applications: ELISA, IHC

Recommended Dilutions: IHC: 25-100; ELISA: 1000-2000

Host Species: Rabbit

Clonality: Rabbit Polyclonal

Isotype: Immunogen-specific rabbit IgG

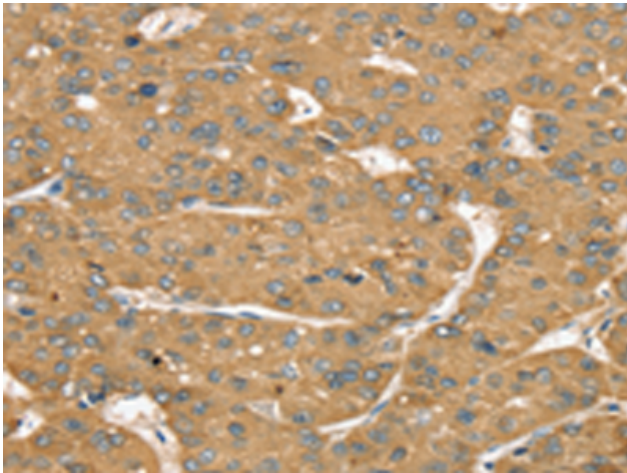
Purification: Antigen affinity purification

Species Reactivity: Human, Mouse, Rat

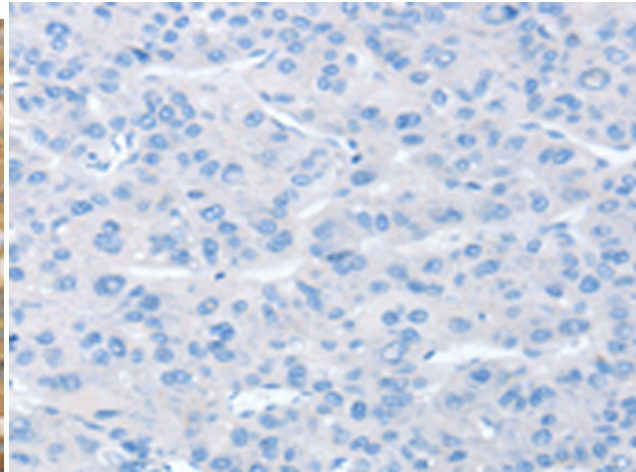
Constituents: PBS (without Mg²⁺ and Ca²⁺), pH 7.4, 150 mM NaCl, 0.05% Sodium Azide and 40% glycerol

Research Areas: Neuroscience

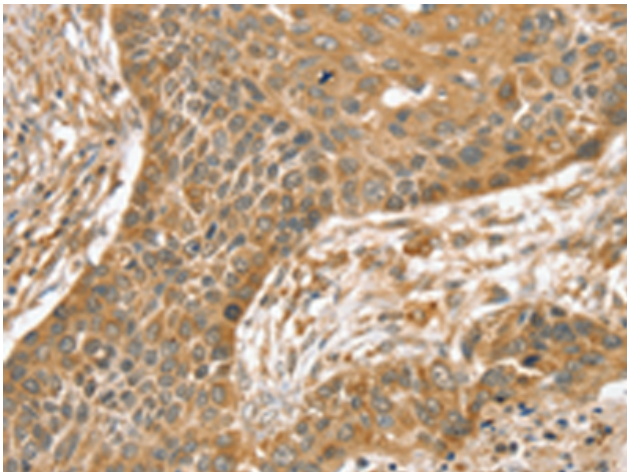
Storage & Shipping: Store at -20°C. Avoid repeated freezing and thawing



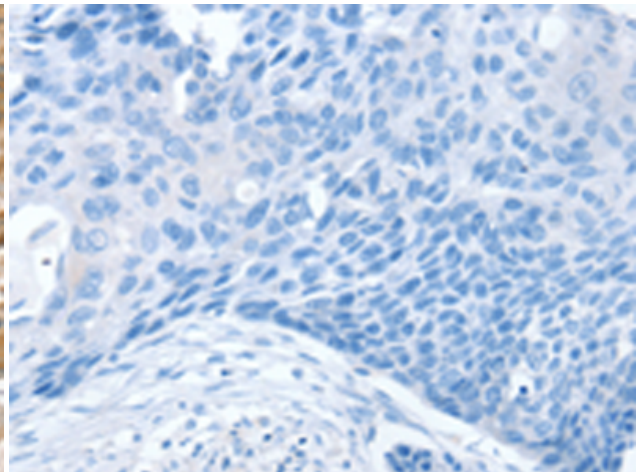
Immunohistochemistry analysis of paraffin embedded Human liver cancer tissue using 214718 (SLIT1 Antibody) at a dilution of 1/35 (Cytoplasm).



In comparison with the IHC on the left, the same paraffin-embedded Human liver cancer tissue is first treated with the synthetic peptide and then with 214718 (Anti-SLIT1 Antibody) at dilution 1/35.



The image on the left is immunohistochemistry of paraffin-embedded Human esophagus cancer tissue using 214718 (Anti-SLIT1 Antibody) at a dilution of 1/35.



In comparison with the IHC on the left, the same paraffin-embedded Human esophagus cancer tissue is first treated with synthetic peptide and then with D162266 (Anti-SLIT1 Antibody) at dilution 1/35.