

SLP2 RABBIT MAB

Cat.#: N261617

Product Name: Anti-SLP2 Rabbit Monoclonal Antibody

Synonyms: stomatin like 2; SLP-2; HSPC108

UNIPROT ID: Q9UJZ1

Background: Mitochondrial protein that probably regulates the biogenesis and the activity of mitochondria.

Immunogen: A synthetic peptide of human STOML2

Applications: WB, ICC/IF, IP

Recommended Dilutions: WB: 1/500-1/1000 IF: 1/50-1/200 IP: 1/20

Host Species: Rabbit

Clonality: Rabbit Monoclonal

Clone ID: R09-6C3

MW: Calculated MW: 39 kDa; Observed MW: 39 kDa

Isotype: IgG

Purification: Affinity Purified

Species Reactivity: Human, Mouse, Rat

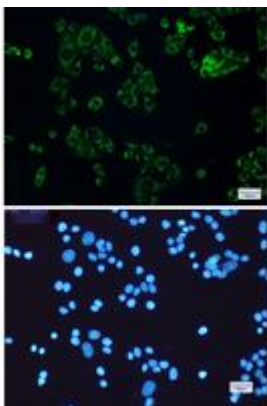
Conjugation: Unconjugated

Modification: Unmodified

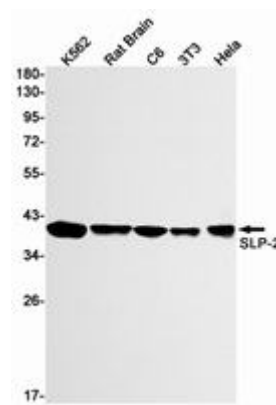
Constituents: PBS (without Mg²⁺ and Ca²⁺), pH 7.3 containing 50% glycerol, 0.5% BSA and 0.02% sodium azide

Research Areas: Cancer

Storage & Shipping: Store at -20°C. Avoid repeated freezing and thawing



Immunocytochemistry analysis of SLP2 (green) in HeLa using SLP2 antibody, and DAPI (blue)



Western blot analysis of SLP2 in K562, rat Brain, C6, 3T3, HeLa lysates using SLP2 antibody.



Product Description

Pioneering GTPase and Oncogene Product Development since 2010
