

SLTM RABBIT PAB

Cat.#: S220947

Product Name: Anti-SLTM Rabbit Polyclonal Antibody

Synonyms: Met

UNIPROT ID: Q9NWH9 (Gene Accession - NP_079031)

Background: When overexpressed, acts as a general inhibitor of transcription that eventually leads to apoptosis.

Immunogen: Synthetic peptide of human SLTM

Applications: ELISA, IHC

Recommended Dilutions: IHC: 50-100; ELISA: 5000-10000

Host Species: Rabbit

Clonality: Rabbit Polyclonal

Isotype: Immunogen-specific rabbit IgG

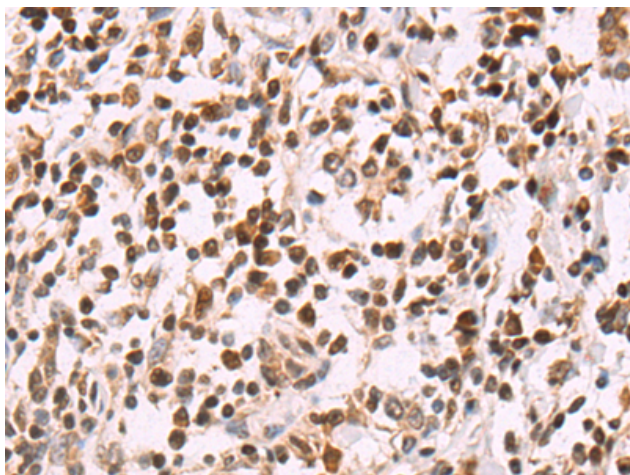
Purification: Antigen affinity purification

Species Reactivity: Human, Mouse

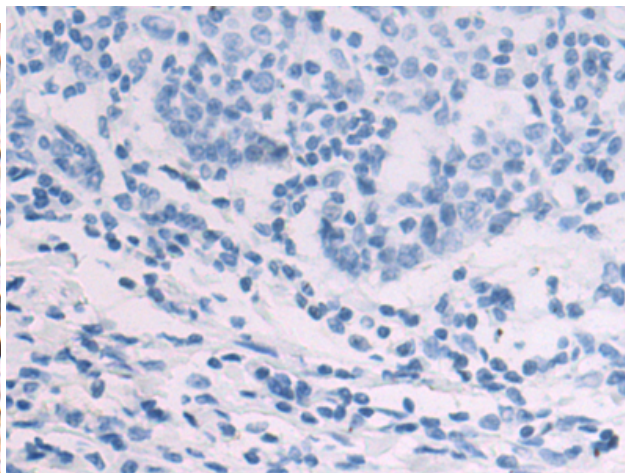
Constituents: PBS (without Mg²⁺ and Ca²⁺), pH 7.4, 150 mM NaCl, 0.05% Sodium Azide and 40% glycerol

Research Areas: Epigenetics and Nuclear Signaling

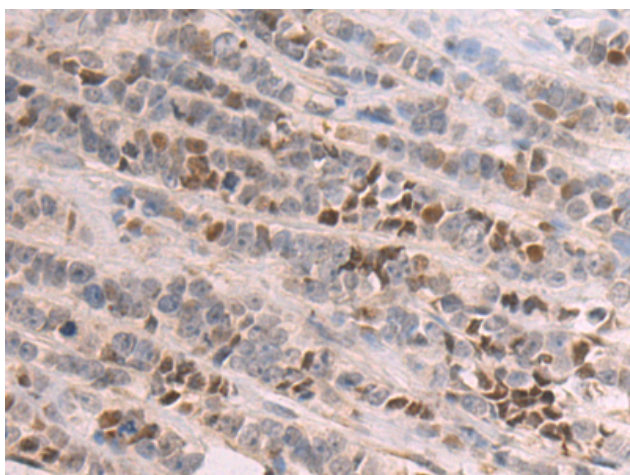
Storage & Shipping: Store at -20°C. Avoid repeated freezing and thawing



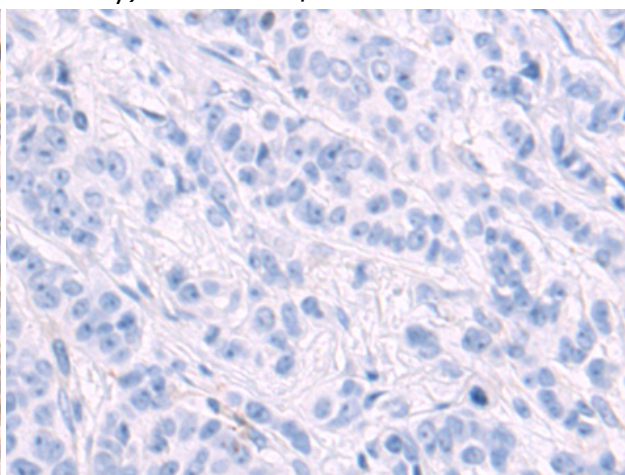
Immunohistochemistry analysis of paraffin embedded Human gastric cancer tissue using 220947 (SLTM Antibody) at a dilution of 1/50 (Nucleus).



In comparison with the IHC on the left, the same paraffin-embedded Human gastric cancer tissue is first treated with the synthetic peptide and then with 220947 (Anti-SLTM Antibody) at dilution 1/50.



The image on the left is immunohistochemistry of paraffin-embedded Human breast cancer tissue using 220947 (Anti-SLTM Antibody) at a dilution of 1/50.



In comparison with the IHC on the left, the same paraffin-embedded Human breast cancer tissue is first treated with synthetic peptide and then with D262269 (Anti-SLTM Antibody) at dilution 1/50.