

## SMAC RABBIT MAB

**Cat.#:** N262909

**Product Name:** Anti-SMAC Rabbit Monoclonal Antibody

**Synonyms:** SMAC; DFNA64; DIABLO; SMAC3

**UNIPROT ID:** Q9NR28

**Background:** Smac/Diablo is a 21 kDa mammalian mitochondrial protein that functions as a regulatory component during apoptosis. Upon mitochondrial stress, Smac/Diablo is released from mitochondria and competes with caspases for binding of IAPs (inhibitor of apoptosis proteins). The interaction of Smac/Diablo with IAPs relieves the inhibitory effect of the IAPs on caspases.

**Immunogen:** A synthetic peptide of human Smac/Diablo

**Applications:** WB,IHC-F,IHC-P,ICC/IF,IP

**Recommended Dilutions:** WB: 1/500-1/1000 IHC: 1/50-1/100 IF: 1/50-1/200 IP: 1/20

**Host Species:** Rabbit

**Clonality:** Rabbit Monoclonal

**Clone ID:** R08-6A3

**MW:** Calculated MW: 27 kDa; Observed MW: 21 kDa

**Isotype:** IgG

**Purification:** Affinity Purified

**Species Reactivity:** Human,Mouse,Rat

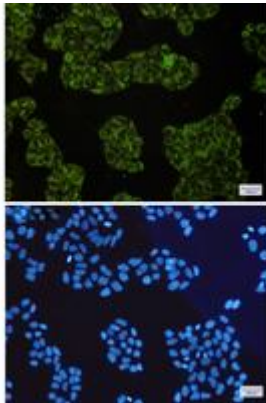
**Conjugation:** Unconjugated

**Modification:** Unmodified

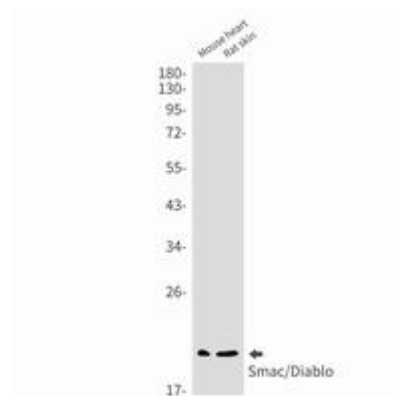
**Constituents:** PBS (without Mg<sup>2+</sup> and Ca<sup>2+</sup>), pH 7.3 containing 50% glycerol, 0.5% BSA and 0.02% sodium azide

**Research Areas:** apoptosis - Caspase family

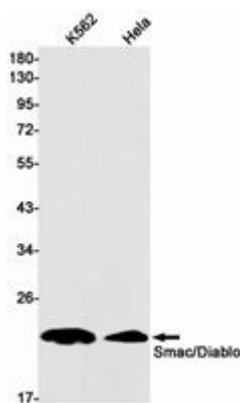
**Storage & Shipping:** Store at -20°C. Avoid repeated freezing and thawing



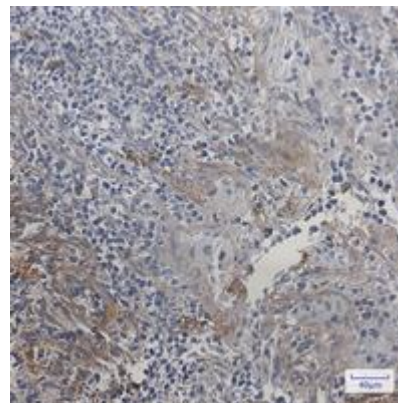
Immunocytochemistry analysis of Smac/Diablo (green) in Hela using Smac/Diablo antibody, and DAPI (blue)



Western blot analysis of Smac/Diablo in mouse heart, rat skin lysates using SMAC antibody.



Western blot analysis of Smac/Diablo in K562, Hela lysates using Smac/Diablo antibody.



Immunohistochemistry analysis of paraffin-embedded Human tonsil using Smac/Diablo antibody. High-pressure and temperature Sodium Citrate pH 6.0 was used for antigen retrieval.